

AFOLUX All-in-One Panel PC Series



>>AFL-642A

26"/42"

Large Screen IP64 Panel PC Series

AFOLUX large screen series, AFL-26A/642A, is designed to provide cost-effective and versatile solutions to meet the vast demand emerging from semi-industrial computing markets. From clinical to factory environments, restaurants to schools, and entertainment to surveillance devices, AFOLUX is your ultimate choice to fulfill a wide spectrum of applications.



>>AFL-26A



Features

- WiFi 802.11b/g/n connection (26" with invisible antenna)
- Built-in two speakers
- Built-in Bluetooth technology rids systems of cables and allows wireless connection to peripheral devices like head phones, printers, barcode readers or game controllers
- The Ambient Light Sensor helps conserve energy
- VESA-mountable for flexibility in mounting and deployment
- Comprehensive set of USB and full legacy I/O ports for peripherals and accessories
- Support for Windows XP Embedded (Optional)
- Optional 26" SAW touch panel with RS-232 Interface
- Tempered Glass with Anti-Reflection coating



>> Durable SAW Touch Screen or Tempered Glass Protection

Anti-Reflection Tempered Glass

• Clear Image by Low Reflection (For 26"/42" Tempered Glass Modes)

AFOLUX tempered glass series used 4 layer hard coating to reduce the sunlight reflected from the surface of the panel, increase contrast ratio and image readability even when used in outdoor.



Conventional

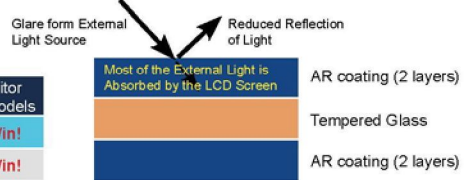


With AR Coating

- Reduced intensity of reflected light
- No image distortion
- Higher contrast
- Wider viewing angles
- Colors are more vibrant

	Conventional Monitor	AFOLUX PPC/Monitor Tempered Glass Models	
Transmission	90%	96±3%	Win!
Reflection	9%	Less than 3%	Win!

Behavior of Light Reflected by LCD Screen



• Durable (For Tempered Glass Protection Models)

8H Stronger Protection

IEI AFOLUX tempered glass monitor's 8H hardness through strict testing is stronger than the conventional panel and therefore is able to protect the screen from damage, offers protection solutions for a wide variety of applications.



Hardness Test (JIS-K5600)



• Solid SAW Touch Panel (26" Monitor Optional)

Touch Screen Technology			
	Resistive	Surface Capacitive	SAW
Sensing method	Hand or stylus	Hand	Hand or Gloved Hand
Sensing Medium	ITO film or glass	ITO glass	Glass
Transmittance degree	80%~90%	90% above	92% above WIN!
Touch accuracy	Good	Normal	Excellent WIN!
# of touches in lifetime (mn)	35	200	100
Strength	Waterproof, dirt-proof	Fireproof, dirt-proof, not easily scratches, Long life	Fireproof, high reliability, not easily scratches, Long life
Weakness	Easily scratched	Easily affected by EMI	-



Durable SAW touch screen made of pure glass construction

>> Wireless Connection

AFOLUX Panel PC with high speed WiFi 802.11 b/g/n WLAN Networking. 802.11 b/g/n WiFi, which gives you up to broadband speed browsing and connectivity, compared to traditional wired LAN.



Some of the current and emerging applications that are driving the need for 802.11n are Voice over IP (VoIP), streaming video and music, gaming, and network attached storage.

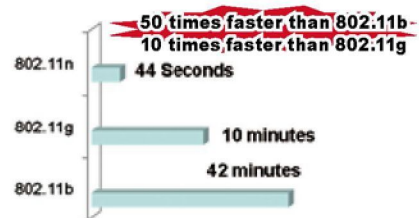
	802.11b	802.11g	802.11n
Data Rate (Mbps)	11	54	540 Up to 540 Mbps
Range (Radius Indoor)	38 Meters	38 Meters	250 Meters
Range (Radius Outdoor)	140 Meters	140 Meters	250 Meters
Radio Frequency	2.4 GHz to 2.5 GHz	2.4 GHz to 2.5 GHz	2.4 GHz or 5 GHz

• Video On Demand (VOD)

802.11a	802.11b/g	802.11n
Access to email, instant image and the Internet	Streaming music Streaming video	VoIP /Gaming /NAS



Compares the time it would take to transfer a 30-minute video file. At the best data transfer rate, it would take 42 minutes to copy the file using 802.11b, and less than a minute with a 802.11n.



• Applications:

Some of the current and emerging applications that are driving the need for 802.11n are Voice over IP (VoIP), streaming video and music, gaming, and network attached storage.



Do wires still inconvenience you when you try to connect peripherals to your system? Bluetooth module integrated into the AFOLUX all-in-one panel PC transmits information between peripheral devices through a complete Bluetooth network.



Push Marketing



AFOLUX PPC being used as an advertising unit to send the promotion content via Bluetooth technology



Bluetooth Speakers



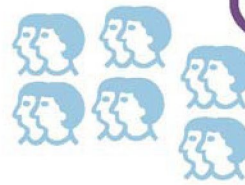
Bluetooth enabled cell phone



Music

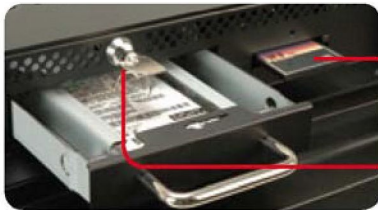


Content



Audience receive content and music via Bluetooth technology

>> User-Friendly Interface



• **User-accessible CF**

CF slot on the bottom panel, making installing and replacing CF cards easy.

• **Lockable HDD Drive**

(For 42" AFOLUX PPC)



• **Selectable AT/ATX Mode**

Easily select the AT/ATX power mode with an easily accessed switch.

• **AT Mode**



Automatic start when power connected, easy to control multiple Panel PCs from a single point.

• **ATX Mode**



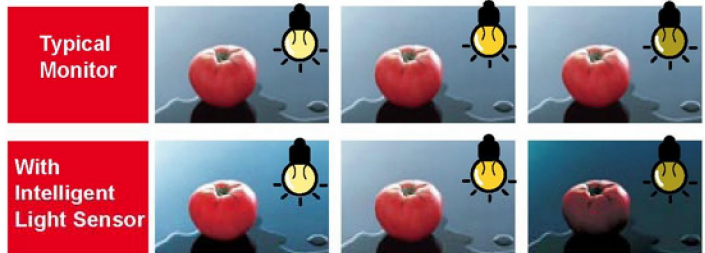
Power management function turns the system to standby mode to save power when the Panel PC is not used. Remote control via Network.

• **Intelligent Light Sensor**

Intelligently adjusts the screen brightness to match the ambient light. If the ambient light is very bright, the sensor increases the screen's brightness; conversely, if the PPC is used in a darkened room, the display is dimmed.



Light Sensor



Typical Monitor

With Intelligent Light Sensor

- Reduces cost of operation by reducing the power usage
- Extends backlight life
- Provides comfortable viewing

• **OSD Adjustment with Remote Control**

For convenience, AFL-26A/642 series especially designed with OSD keypad below the front panel allow fast volume and brightness adjustment.



- Volume Adjustment
- Brightness Adjustment
- Auto Adjustment
- LCD On/Off
- OSD Lock Function



Volume Adjustment

>>Retail



The Strongest X86-based Digital Signage Panel PC



- **High durability and reliability in order to resist long-hour usage for 24 hours per day, 365 days per year.**
- **A vertical (Portrait) installation capability**
- **IP 64 Rated Panel resistance to dirt and water spray**
- **High Resolution LCD Screens**
26" Full HD LCD screen provides the most finest image to attract people's attention
- **26" Touch Screen Capable**
Maximize interactivity with your customer with our touch screen models.
- **Intel® Core 2 Duo or AMD® Athlon CPU's**
- **Maximize interactivity with your customer with our touch screen models.**
- **Exclusive All-In-One Design**
Zero-footprint PC allows you to place the Panel anywhere you need it.
- **802.11 b/g/n wireless Connection**
Access the PC remotely and feed content via wireless networking.
- **Ready for Digital Signage Right Out of the Box**
Systems can come pre-installed with digital signage software, or a custom solution can be designed for you by one of our content partners.

• The Strongest X86-based Digital Signage Panel PC

AFL-AMD® 690T panel PC with a ATI graphic core and dual core CPU is an ideal high-performance digital signage solution for high-end graphic and video applications.

	Content Format			Compatibility	Interactivity	Real Time Information	ImageQuality
	Video Formant Support	Graphics Format Support	Others				
RISC-based Digital Signage 	Fewer	Fewer	- Dual Mirror Display	Confined to specific program	-	-	Normal
X86-based Digital Signage WIN! 	More	More (HTML, TIFF, RAW, Flash, Dynamic GIF)	Windows Media, Powerpoint Dual Independent Display	Compatible with Windows based application program	Built-in touchscreen and bluetooth draw your customers in and keeps them involved	Wireless /GPRS/HSDPA	3D comb filter and noise reduction technology enhance more crystal-clear picture

• Delivers the Stunning Clarity Image

AFL-690 digital signage touch panel PC series with Radeon™ X1250 3D Graphics Core through ATI Avivo™ technology to increase video quality Avivo's revolutionary technologies come together to enable superior quality and High-Definition (HD) visual experiences on the PC.

- **Capturing**
 - Automatically adjust its brightness and contrast.
 - Motion adaptive 3D comb filter, automatic color control, automatic gain control
 - Hardware noise reduction and edge enhancement technologies for better video playback quality
- **Decode**
 - The GPU core supports hardware decoding of H.264, VC-1, WMV9, and MPEG-2 videos to lower CPU utilization
- **Encode**
 - Support hardware encoding of H.264, VC-1, WMV9, and MPEG-2 videos to lower CPU utilization
- **Process**
 - Supports vector adaptive de-interlacing and video scaling to reduce jaggies, and spatial/temporal dithering, enabling 10-bit color quality on 8-bit and 6-bit displays during process stage



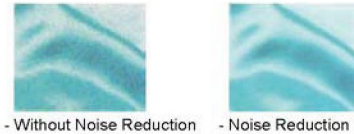
3D Comb Filter

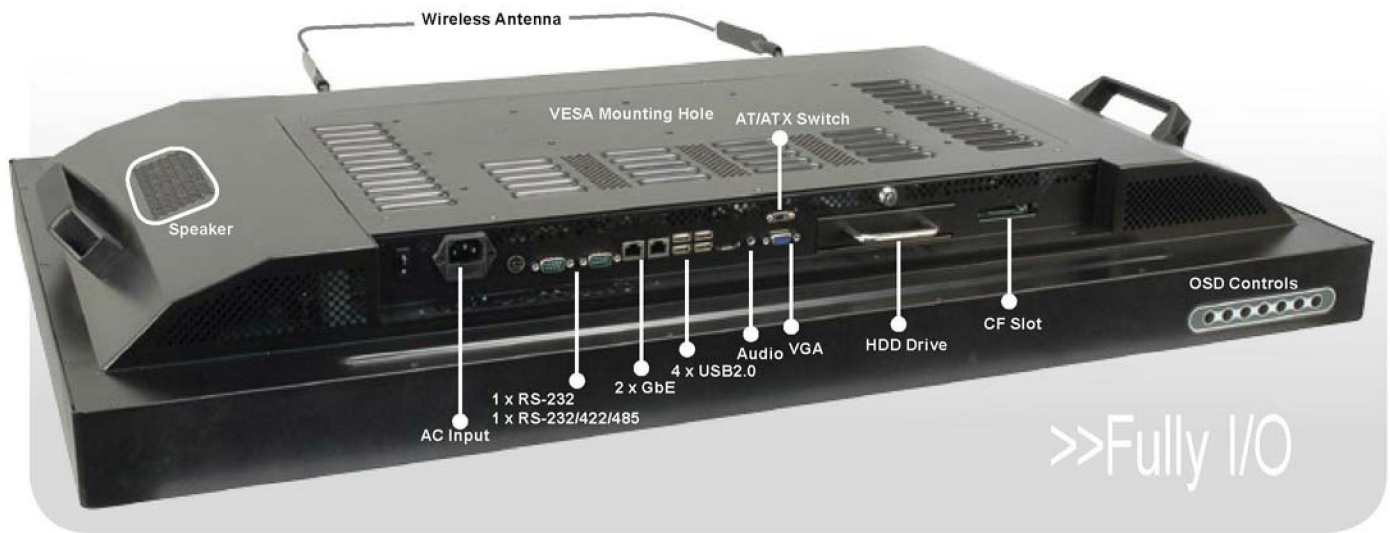
The 3D Comb Filter is best used for still images, as it removes flickering and provides the most accurate onscreen image colors.



Noise Reduction

Digital Noise Reduction is essential in effecting a pure digital display. This technology implements an algorithm to remove clamping noise; the result is a grain-free, crystal-clear picture.





>>IEI Quick Mounting Technology

• Install Anywhere

The AFOLUX PPC/Monitor series with VESA standard mounting holes design, can be mounted virtually anywhere and in any forms including wall mounting, stand and arm options, giving you the flexibility to place the system in the best location.

• Lift Stand



• Wall Arms



• Wall Mounts



• Ceiling Mounts



• Mobile Mounts



	STAND-A26-R10	ARM-50	WK-80	CEILMT-135	STAND-M100
Weight Capacity	7.3–16.3 kg	< 50 Kg	< 80 Kg	< 135 Kg	< 100 Kg
Monitor Swivel	0°	20°	0°	20°	0°
Swivel (Left / Right)	0°	360°	0°	180°	0°
Pivot (Up / Down)	+25°/-5	45°	0°	20°	0°
Mounting	VESA 75mm x 75mm VESA 100mm x 100mm VESA 200mm x 100mm VESA 200mm x 200mm	VESA 75mm x 75mm VESA 100mm x 100mm VESA 200mm x 100mm VESA 200mm x 200mm	VESA 75mm x 75mm VESA 100mm x 100mm VESA 200mm x 100mm VESA 200mm x 200mm	VESA 400mm x 200mm VESA 400mm x 400mm	VESA 100mm x 100mm VESA 200mm x 100mm VESA 200mm x 200mm VESA 400mm x 200mm VESA 400mm x 400mm

>> Specifications

Model	AFL-26A-965-R10	AFL-26A-AM2-R11	AFL-642A-965-R10	AFL-642A-AM2-R11
LCD Size	26"	26"	42"	42"
Max Resolution	1920 x 1200	1920 x 1200	1366 x 768	1366 x 768
Brightness (cd/m2)	350	350	500	500
Contrast Ratio	1500:1	1500:1	1500:1	1500:1
LCD Color	16.7M	16.7M	16.7M	16.7M
Pixel Pitch (mm)	0.2865(H) x 0.2865(V)	0.2865(H) x 0.2865(V)	0.681(H) x 0.681(V)	0.681(H) x 0.681(V)
Viewing Angle (H-V)	176/176	176/176	178/178	178/178
Backlight MTBF (hrs)	50000	50,000	50,000	50,000
SBC Model	AFLMB-9652-R10	AFLMB-690EAM2	AFLMB-9652-R10	AFLMB-690EAM2
CPU	Celeron® M550 2.0GHz CPU Core™2 Duo T7500 2.2GHz CPU	AMD Athlon™ 64 X2 Dual-Core Processor 5050e CPU	Celeron® M550 2.0GHz CPU Core™2 Duo T7500 2.2GHz CPU	AMD Athlon™ 64 X2 Dual-Core Processor 5050e CPU
Chipset	Intel® GME965 Chipset	AMD 690E	Intel® GME965 Chipset	AMD 690E
RAM	Supports two 2GB (Maximum) 400MHz DDRII SO-DIMM (System max. 4GB)	Supports one 2GB (Maximum) 400MHz, 533MHz, 667MHz or 800MHz DDRII SO-DIMM	Supports two 2GB (Maximum) 400MHz DDRII SO-DIMM (System max. 4GB)	Supports one 2GB (Maximum) 400MHz, 533MHz, 667MHz or 800MHz DDRII SO-DIMM
I/O Ports and Switches	1 x RS232 COM Port 1 x RS-232/422/485 COM port 2 x RJ-45 for Giga LAN 4 x USB 2.0 1 x Power Switch 1 x Reset Button 1 x External SATA 1 x Audio Port 1 x VGA Port	1 x RS232 COM Port 1 x RS-232/422/485 COM port 2 x RJ-45 for Giga LAN 4 x USB 2.0 1 x Power Switch 1 x Reset Button 1 x External SATA 1 x Audio Port 1 x VGA Port	1 x RS232 COM Port 1 x RS-232/422/485 COM port 2 x RJ-45 for Giga LAN 4 x USB 2.0 1 x Power Switch 1 x Reset Button 1 x External SATA 1 x Audio Port 1 x VGA Port	1 x RS232 COM Port 1 x RS-232/422/485 COM port 2 x RJ-45 for Giga LAN 4 x USB 2.0 1 x Power Switch 1 x Reset Button 1 x External SATA 1 x Audio Port 1 x VGA Port
SSD	CF Typell	CF Typell	CF Typell	CF Typell
Watchdog Timer	Software programmable supports 1~255 sec. System reset			
Audio	AMP 6W + 6W	AMP 6W + 6W	AMP 10W + 10W	AMP 10W + 10W
Extension	1 x Wireless 802.11 b/g/n Lan Module (Mini PCIe Interface) 1 x Bluetooth Module (USB Interface)			
HDD Drive Bay	1 x 2.5" SATA HDD bay			
HSDPA Mobile Solution (Optional)	1 x HSDPA Mobile Module (USB Interface)			
Construction Material	ABS + PC Plastic front frame	ABS + PC Plastic front frame	Metal front frame	Metal front frame
OSD function	1. OSD Keypad below the Front Panel 2. Remote Control for OSD Function			
LED Function	1 x Power ON/OFF LED on Front Panel			
Mounting	Wall, Stand and Arm VESA 200mm x 100mm		Wall, Stand and Arm VESA 400mm x 200mm	
Front Panel Color	Black C	Black C	Black C	Black C
Dimension (WxHxD) (mm)	623 x 425 x 100	623 x 425 x 100	990 x 582 x 135	990 x 582 x 135
Operation Temperature (°C)	0°C ~40°C With HDD 0°C ~45°C With CF Card or SATA interface 2.5" SSD HDD			
Storage Temperature (°C)	-20°C ~60°C			
Net Weight	12 Kg	12 Kg	35 Kg	35 Kg
IP Level	IP64	IP64	IP64	IP64
Touch Screen	Surface Accoustic Wave Type (optional)	Surface Accoustic Wave Type (optional)	N/A	N/A
Power Requirement	100VAC~240VAC, 50/60Hz	100VAC~240VAC, 50/60Hz	100VAC~240VAC, 50/60Hz	100VAC~240VAC, 50/60Hz
Power Consumption	153W (Intel® T7500, 2GB memory, 80G HDD)	187W	259W (Intel® T7500, 2GB memory, 80G HDD)	293W

Ordering Information

LCD		Model	Description
26"	SAW Touch	AFL-26A-AM2/WT-S/1GB-R11	26" 350cd/m ² WUXGA panel PC with AMD socket AM2 Athlon™ 64 X2 Dual-Core 5050e 2.6GHz CPU,1GB DDR2 RAM,802.11 b/g/n wireless module,SAW touch screen,Bluetooth,RoHS
		AFL-26A-9652-CM550/WT-S/1GB-R10	26" 350cd/m ² WUXGA panel PC with Celeron® M 550 2.0GHz CPU,1GB DDR2 RAM,802.11 b/g/n wireless module,SAW touch screen,Bluetooth,RoHS
		AFL-26A-9652-T7500/WT-S/2GB-R10	26" 350cd/m ² WUXGA panel PC with Core™2 Duo T7500 2.2GHz CPU,2GB DDR2 RAM,802.11 b/g/n wireless module,SAW touch screen,Bluetooth,RoHS
	Tempered Glass Protection	AFL-26A-AM2/W/1GB-R11	26" 350cd/m ² WUXGA panel PC with AMD socket AM2 Athlon™ 64 X2 Dual-Core 5050e 2.6GHz CPU,1GB DDR2 RAM,802.11 b/g/n wireless module,Bluetooth,RoHS
		AFL-26A-9652-CM550/W/1GB-R10	26" 350cd/m ² WUXGA panel PC with Celeron® M 550 2.0GHz CPU,1GB DDR2 RAM,802.11 b/g/n wireless module,Bluetooth,RoHS
		AFL-26A-9652-T7500/W/2GB-R10	26" 350cd/m ² WUXGA panel PC with Core™2 Duo T7500 2.2GHz CPU,2GB DDR2 RAM,802.11 b/g/n wireless module, Bluetooth,RoHS
42"	Tempered Glass Protection	AFL-642A-AM2/W/1GB-R11	42" 500cd/m ² WXSGA+ panel PC with AMD socket AM2 Athlon™ 64 X2 Dual-Core 5050e 2.6GHz CPU,1GB DDR2 RAM,802.11 b/g/n wireless module,Bluetooth,RoHS
		AFL-642A-9652-CM550/W/1GB-R10	42" 500cd/m ² WXSGA+ panel PC with Celeron® M 550 2.0GHz CPU,1GB DDR2 RAM,802.11 a/b/g/n wireless module,Bluetooth,RoHS
		AFL-642A-9652-T7500/W/2GB-R10	42" 500cd/m ² WXSGA+ panel PC with Core™2 Duo T7500 2.2GHz CPU,2GB DDR2 RAM,802.11 a/b/g/n wireless module,Bluetooth,RoHS

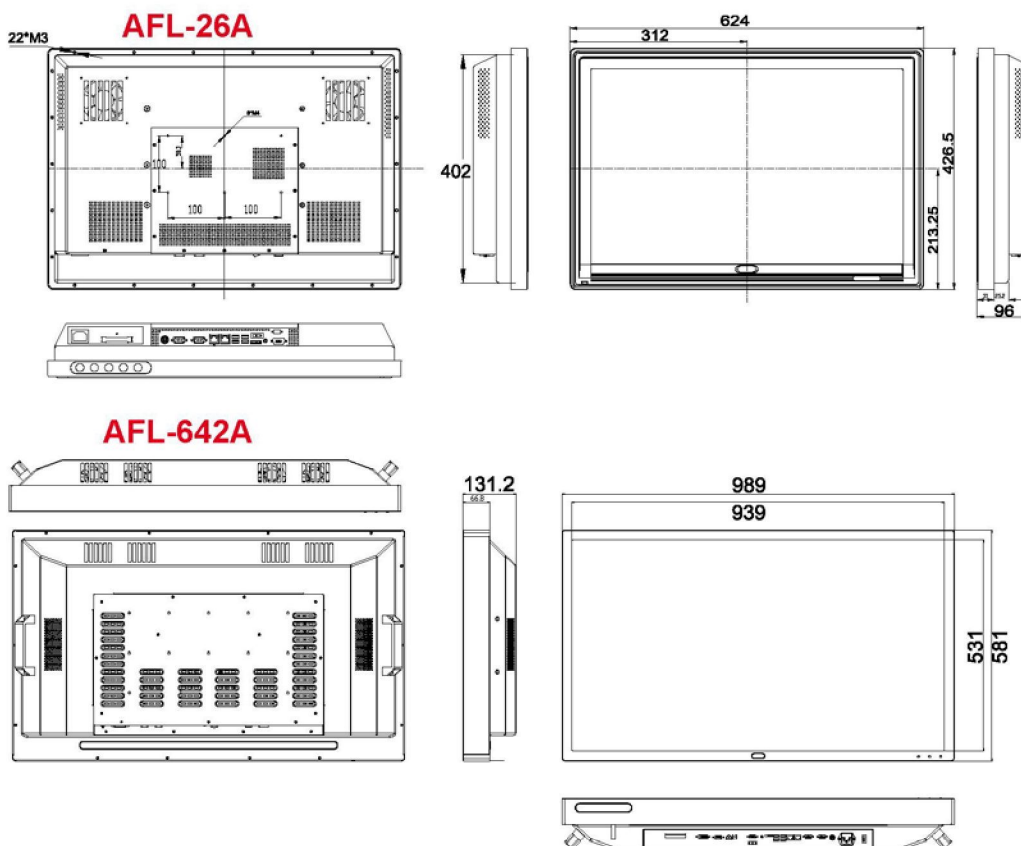
Packing List

Item
Power Cord
Remote Controller with Battery
User's Manual
Antennas (For 42" AFOLUX PPC)

Optional Mounting Kits

Mounting Kits	Model		
	26" LCD	42" LCD	
WALL MOUNTS	WK-80		
WALL ARMS	ARM-50		
Stand	Desktop	STAND-A26	N/A
	Mobile	STAND-M100	
Ceiling Mount Kit	CEILMT135		

Dimensions



Distributed by:

i-Tech Company LLC

TOLL FREE: (888) 483-2418 • EMAIL: info@i-techcompany.com • WEB: www.i-techcompany.com