



16-Port IP Serial Over the Net SN0116

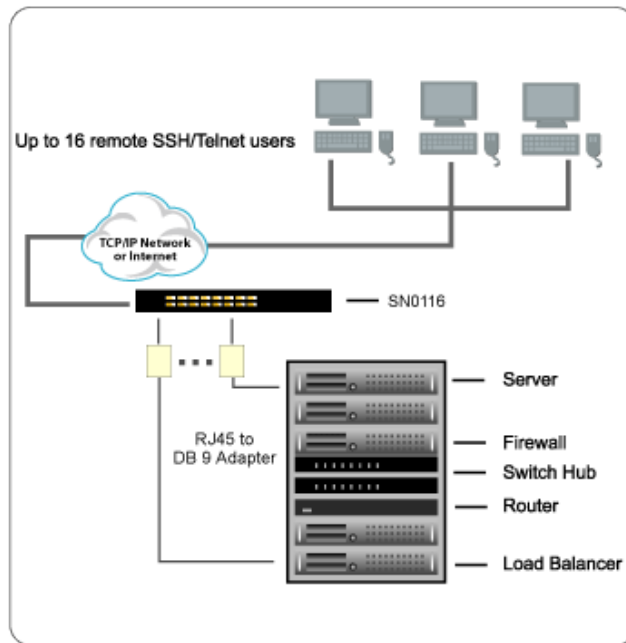
ATEN's SN0116 - IP Serial Over The Net - allows IT administrators to log in remotely via their choice of Telnet, VT100 console terminal, or Java-enabled web browsers to manage serial devices such as routers, UPS units, switches and servers. The SN0116 provides multi-level security and supports TCP/IP, Telnet, UDP, HTTP, HTTPS, RADIUS, SNMP, SMTP, DHCP, ARP, NTP, DNS, SSL, SSH and PPP protocols. The Serial Over The Net also supports a wide range of operating systems including Solaris, Linux, Unix and Windows 2003 Servers. It also features innate surge protection to ensure safe connectivity while managing the attached applications.

Distributor Part NO. : Contact Aten for part number @ 949.428.1111

I Features:

- Complete Remote Serial Management: Remote serial access over the Internet for up to 16 servers or other serial IT devices
- Each port can be accessed individually by 16 users
- Secure: Multi level secure user login; user authentication; port-specific access rights
- Simple access using Telnet, VT100 console terminals, and Java-enabled web browsers
- Dial in Modem Access: Using serial applications (such as Hyperterminal), or IP applications (such as Telnet)
- Protocols: TCP/IP, PPP, UDP, HTTP, HTTPS, SSL, SSH, RADIUS, SNMP, SMTP, DHCP, ARP, NTP, DNS, Telnet
- Sun Ready: Hardware break suppression ensures uninterrupted operation of your Solaris server
- Console port automatically detects and adjusts to incoming protocol

I Diagram :



Requirements:

- Sun Java2 JRE 1.4 or higher must be installed on the monitoring computer
- Devices connected to the SN0108 or SN0116 must support RS-232 terminal operations

Package Content:

- 1 x SN0116
- 1 x RJ45 (F) to DB-9 (M) Adapter, #SA0142
- 16 x RJ45 (F) to DB-9 (F) Adapters, #SA0141
- 1 x Power Cord
- 1 x Software CD
- 1 x Rackmount Kit
- 1 x User Manual
- 1 x Quick Start Guide

Specification :

* Master Carton	
Width	25.5 in.
* Master Carton Qty.	3
Height	14 in.
Depth	15.5 in.
*** Unit Package Dimensions	
Depth	4.75 in.

Height	12.75 in.
Width	24.75 in.
LEDs	
LAN	Green
Power On	Blue
10/100 Mbps	Orange/Green
Power	
Voltage	110 - 220 Auto Sensing
Amps	15A
Housing	
Case	Metal
Weight	
Unit Pack Wt.	10.2 lb.
Master Carton Wt.	33.85 lb.
*** Unit Dimensions	
Height	1.7 in. (4.3 cm)
Length	17.0 in. (43.2 cm)
Width	8.5 in. (21.6 cm)
Operating Temperature	32F~122F (0C-50 C)
Power Consumption	120V/60HZ/12W; 230V/50HZ/12W
Storage Temperature	-4F~140F (-20C-60C)
Security	Multi-Level Password Security
Computer Interface	Local or Remote Interface
LAN Connection	1 x RJ45
Ports	16 x RJ45 Ports
Cable Length	6 Feet
IDs	Port & Name
Humidity	0 - 80% RH; Noncondensing
Network Protocol	TCP/IP, Telnet, SSH, SSL, PPP
Reset Switch	Semi-recessed push button
Frequency	60HZ
Mounting	1U
Signal Type	Serial
Connectors (Computer)	16 x RJ45 (RS232 Signal)
Power Switch	Rocker Switch
Voltage	100-240V