

BHK117-8Ue Keyboard & Touchpad Replacement Guide

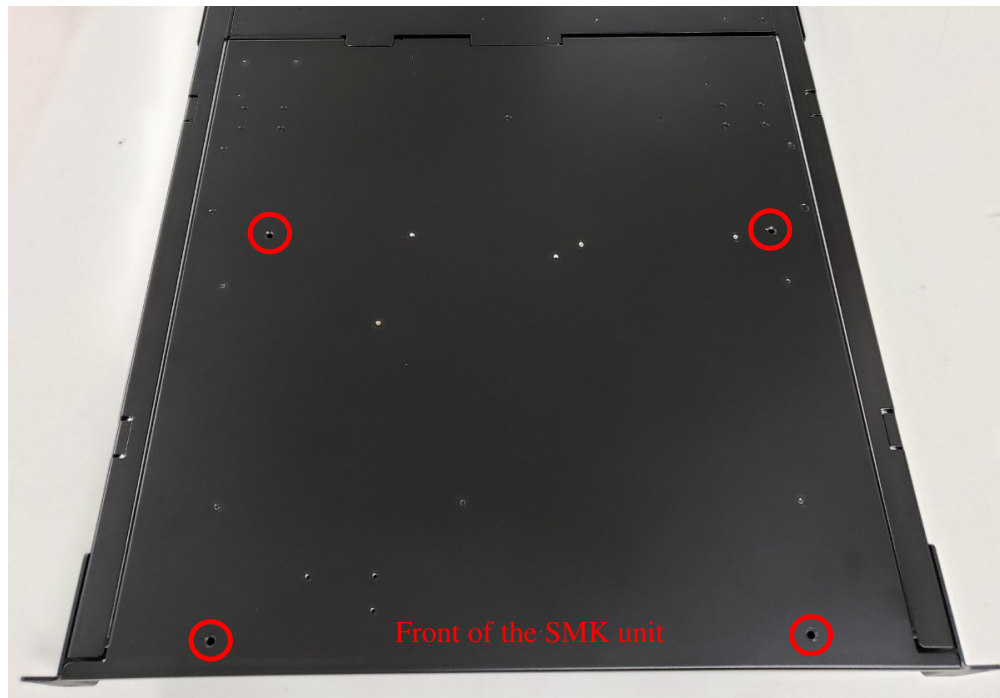


i-Tech Company LLC

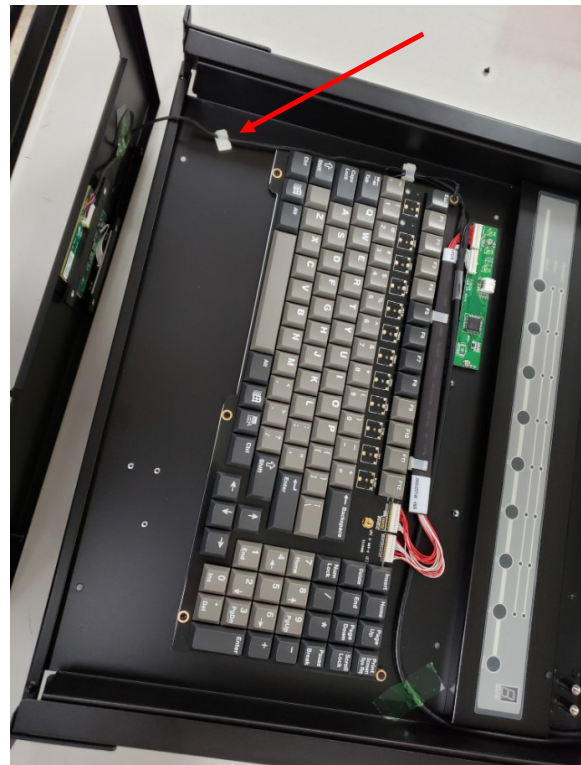
TOLL FREE: (888) 483-2418 • EMAIL: info@itechlcd.com • WEB: www.iTechLCD.com

BHK117-8Ue Keyboard Module Replacement

1. Remove the 4 screws on the bottom of the SMK unit.



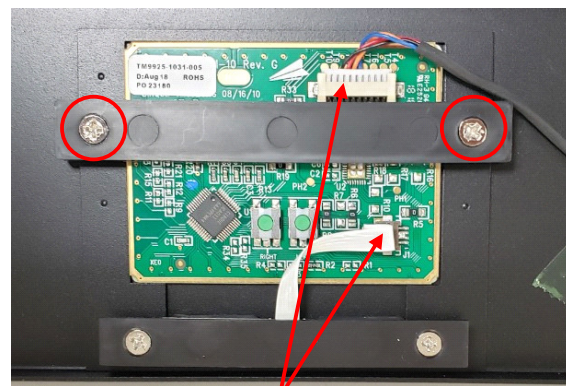
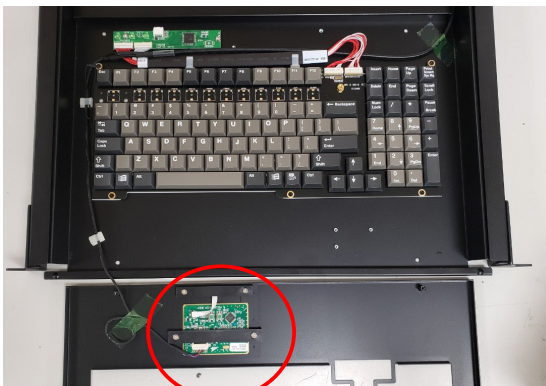
2. There are connecting wires from the controller to the touchpad. Slowly and gently lifting the keyboard top cover.



3. Disconnect wires and remove the screws holding the keyboard module.
4. After keyboard module replacement, reverse the steps to reassemble the keyboard.



5. Disconnect wires from the touchpad and remove the screws that hold the touchpad in place.



6. Reconnect wires and reassemble touchpad.