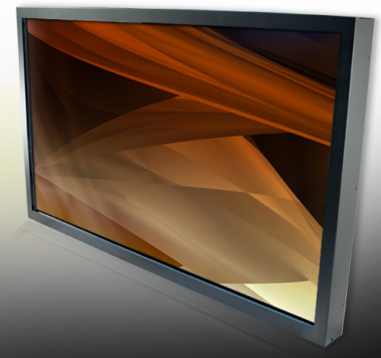


IR 6-points Touch Widescreen Display

IR 6-points Touch Chassis Mount, 46" LCD monitor, 1920 x 1080, 380 nits, DVI+VGA+AUDIO, CCFL backlight of panel
+Flex wall mount, USB Controller. (High speed two point multi-touch --Support Linux and Window XP/7/8)



(Model: BCHW4600-MOT)

FEATURES:

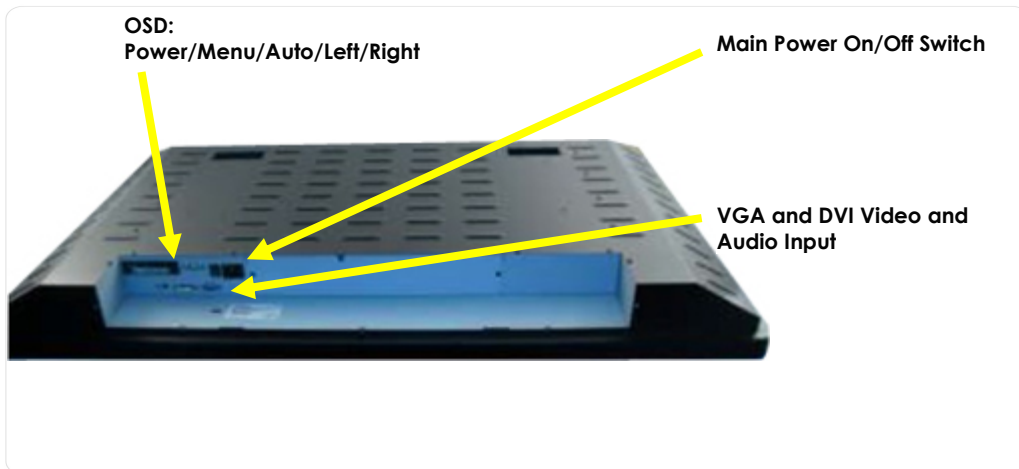
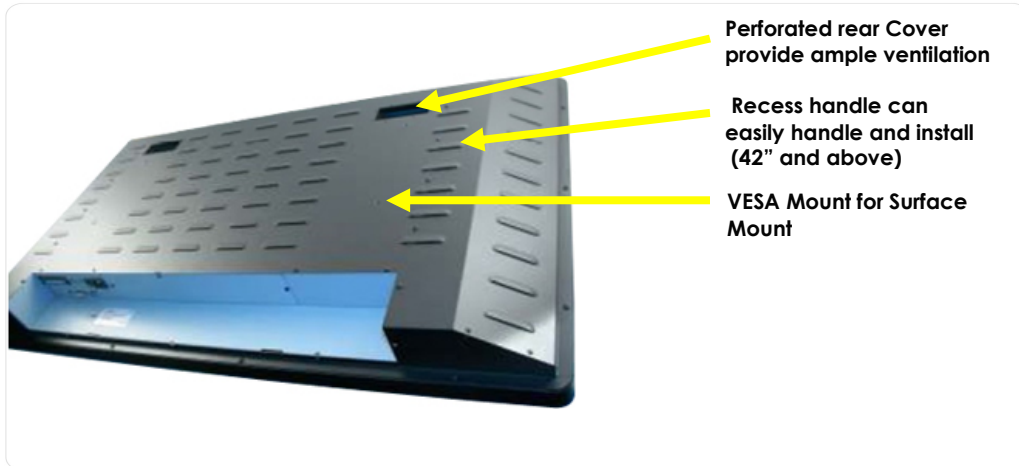
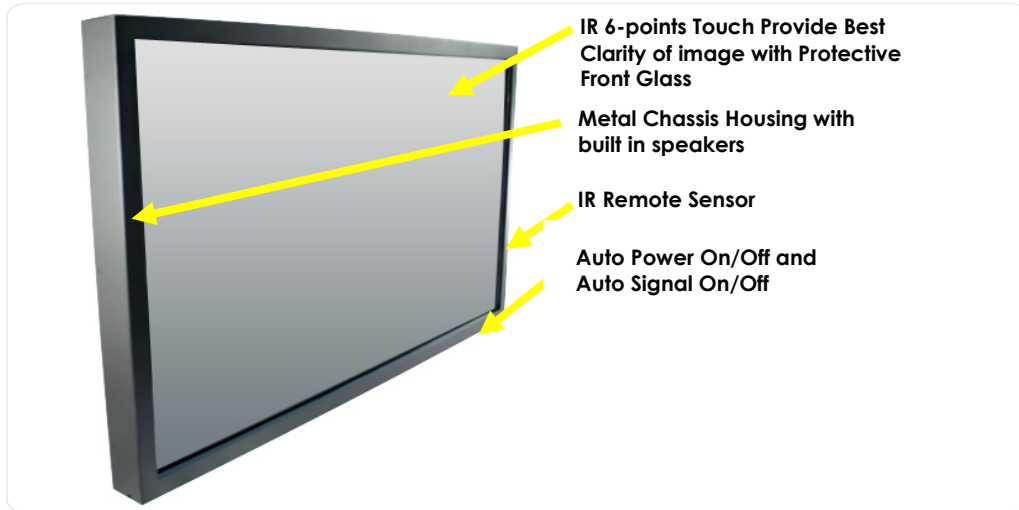


PHOTO GALLERY:



Display Specifications – CCFL PANEL

| | |
|--------------------------------|------------------------|
| Active Screen Size | 46" (16:9) |
| Display Area(mm) | 1018.08(H) x 572.67(V) |
| Number of Pixels | 1920 x 1080 |
| Contrast Ratio | 4000 : 1 |
| Colors | 16.7M |
| Brightness(cd/m ²) | 320 up to 400 |
| View Angle | R/L178° x U/D178° |
| Response Time | 6.5 ms |
| Backlight Life Time | 50,000/hr |

Power

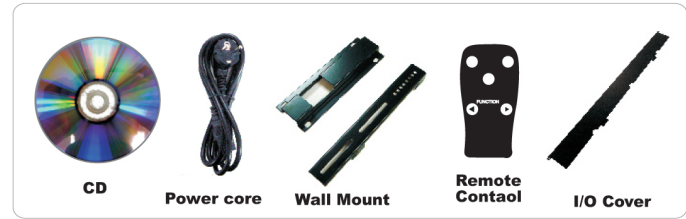
| | |
|-------------------------|----------------------|
| Power Input | 100V~240V AC 50/60Hz |
| Total Power Consumption | 130 W |

Mechanical Specifications

| | |
|-------------------|-----------------------|
| Operating Temp. | 0°~35°C |
| Relative Humidity | 20~80% RH |
| Storage Temp. | -20°~55°C |
| Dimensions(mm) | 1126(L)x680(W)x137(D) |
| Mounting(LxW/mm) | 600(L)x200(W) |

Accessories

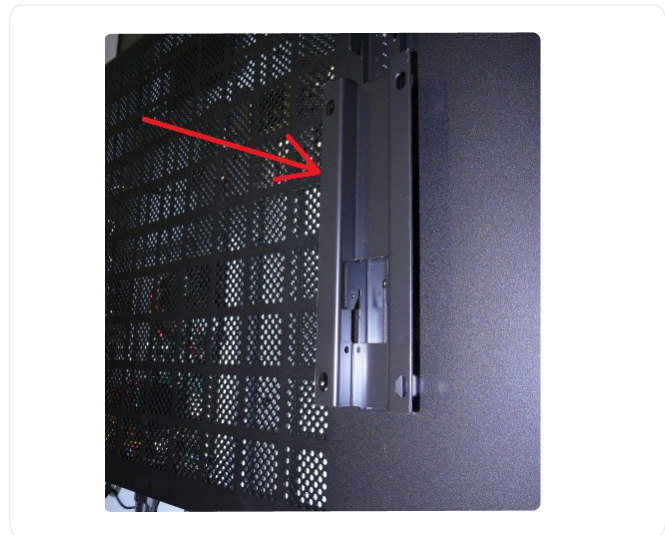
| |
|--------------------|
| CD x 1 |
| Power Core x 1 |
| Wall mount x 1 |
| Remote Control x 1 |
| I/O Cover x 1 |



optional

optional

Included Low Profile Wallmount Bracket



Mechanical Drawings

