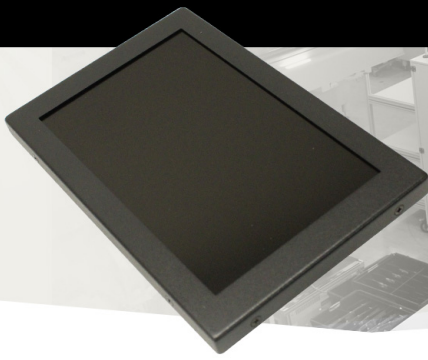


# INDUSTRIAL CHASSIS/WALL MOUNT METAL

Wide 7" 800 x 480 400nits, VGA and DVI Input, 12VDC Power input  
120mm Height x 187.5mm Width x 30.5mm

**Model: CCHW0700-USN01**



## FEATURES:

- High Contrast color TFT LCD Monitor support resolution up to WVGA(800x480)
- Power management system conforms to VESA DPMS and EPA Energy Star standards.
- Full consideration for touch screen installation and application.
- Universal Power adapter.
- Support DDC1 & DDC2B for Plug & Play compatibility.
- Advanced OSD control for picture quality adjustment.
- Detachable stand for wall-mounting application.
- Heavy duty Monitor with steel frame.
- Custom design by request.

## SPECIFICATIONS:

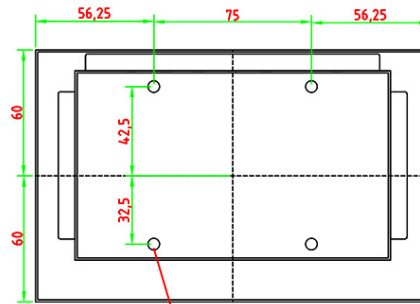
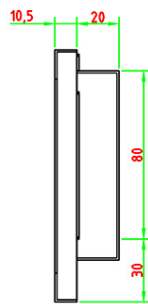
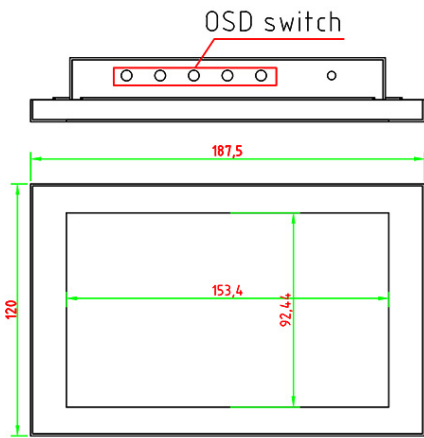
<b>Display</b>	Viewing Size Image	7"
	Active Display Area (mm)	152.4(H) x 91.44 (V)
	Pixel Pitch (mm)	0.1905(H)x0.1905(V)
	Resolution	800x480
	Contrast Ratio	500 : 1 (typ.)
	Color	R.G.B Stripe
	Brightness	400 cd/m
	Viewing Angle	-80~80 (H) ; -60~80 (V)
	Recommended Resolution	800x480@ 60Hz
	Signal Connector	VGA,DVI
<b>Power</b>	Source	12V DC in,with External AC-DC Adapter(100-240V)
	Consumption	8W typical, normal operation
	Management	VESA DPMS Compliant
	Touch	Resistive, PCAP
<b>Optional</b>	High Brightness	1000,1500
	Auto Dimming	YES
	POWER in	DC24V, DC9V~36V
	Remote Control	YES
	IO	AV,HDMI,DP

## APPLICATIONS:



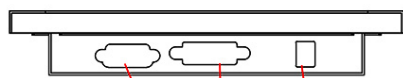


**MECHANICAL DRAWING:**



M4 Vesa Mount

UNIT:mm



VGA

DVI

DC12V  
power input

