

RUGGED COMPLETELY SEALED FULL IP66/NEMA4X STAINLESS STEEL CHASSIS/SURFACE MOUNT

21.5" Normal Brightness 250nits, 1920x1080 with 5 Wire Resistive Touch Screen and USB Controller based on Default 3 set waterproof connectors Waterproof connectors & cables: DVI,VGA USB for touch screen & Power 6ft long only with external 100~240VAC + adapter



Model: CCHW2150-SIP-TR

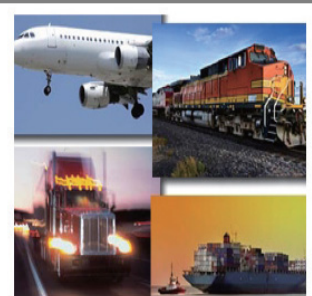
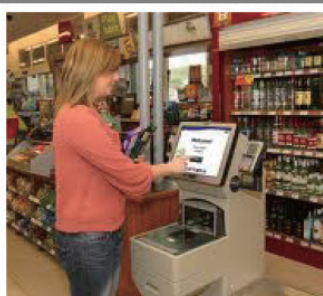
FEATURES:

- High Contrast color LCD Monitor with resolution up to Full HD (1920 x 1080)
- Completely Sealed FULL IP66/NEMA4X
- High Shock & Vibration Resistance
- Widely Application: Automation, Medical, Tourist, Transportation

SPECIFICATIONS:

Display	Viewing Size Image	21.5"
	Active Display Area (mm)	479 (H) x 270.50 (V)
	Pixel Pitch (mm)	0.248 x 0.248
	Resolution	1920 x 1080
	Contrast Ratio	5000 : 1 (typ.)
	Color	16.7M (8bits/colors)
	Brightness	250 cd/m ²
	Viewing Angle	-89~89 (H) ; -89~89 (V)
	Recommended Resolution	1920 x 1080 @ 60Hz
	Signal Connector	VGA,DVI
Power	Source	12V DC in, with External AC-DC Adapter(100-240V)
	Consumption	38W typical, normal operation
	Management	VESA DPMS Compliant
Optional	Touch	Resistive, PCAP
	High Brightness	YES
	Auto Dimming	YES
	POWER in	DC24V ,DC9V~36V
	Remote Control	YES
	IO	AV,HDMI,DP

APPLICATIONS:



MECHANICAL DRAWING:

