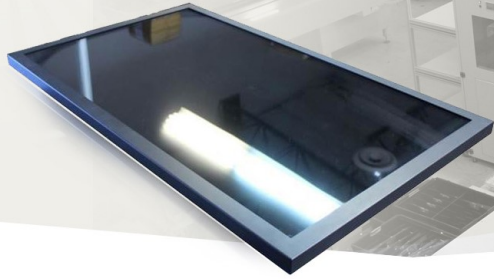


IR TOUCH SCREEN ALL IN ONE PC WIDESCREEN DISPLAY



43" LCD monitor Clean Tempered glass, Fan Design, 1920 x 1080, 450 nits,
 *MS-98F5 (J1900) / RAM 4GB (0C~70C) / SSD 256GB (0C ~70C)
 +Internal power supply with universal / Auto-Sensing, AC90 to 260V, 50/60
 Hz with On/Off Switch +Wall mount Bracket
 +*Win 10 IoT Ent 2019 LTSC MultiLang ESD OEI Entry

Model: CCPCW4300HD-J

FEATURES:

- High Contrast Monitor with resolution up to (1920x1080)
- Modern & Customized Design
- High Shock & Vibration Resistance
- Widely Application: Automation, Medical, Tourist, Education...

SPECIFICATIONS:

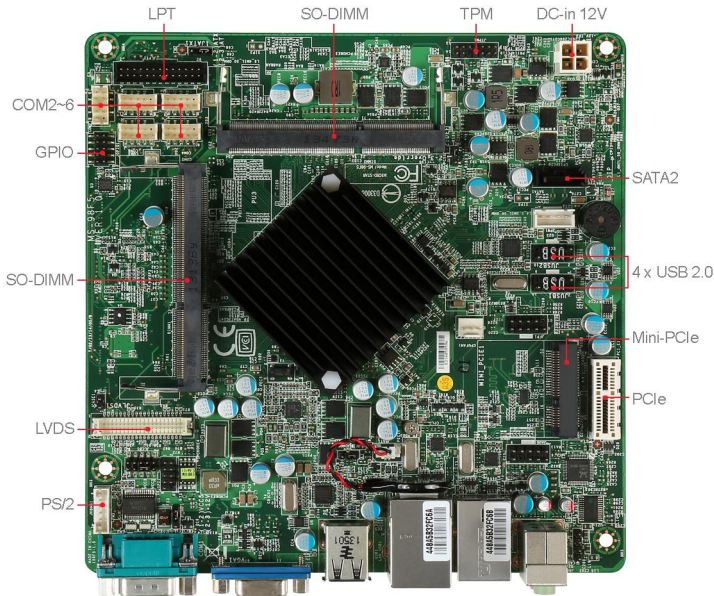
Display	Viewing Size Image	43"
	Active Display Area (mm)	945.9 (H) x 534.02 (V)
	Pixel Pitch (mm)	0.49005(H)x 0.49005(V)
	Resolution	1920x1080
	Contrast Ratio	3000:1 (typ.)
	Color	16.7M(6-bit+Hi-FRC)
	Brightness	450nits
	viewing Angle	-89-89 (H); -89-89 (V)
	Recommended Resolution	1920 x 1080 @60Hz
	Signal Connector	VGA, DVI
Power	Source	AC90 to 260V
	Consumption	64.18W typical, normal operation
	Management	VESA DPMS Compliant
	Touch	IR Touch
Optional	High Brightness	1000,1500
	Auto Dimming	YES
	Power in	DC24V
	Remote Control	YES
	IO	AV,HDMI,DP

APPLICATIONS:



MS-98F5 FEATURES

- Support Intel® BayTrail Quad Core 1.83/2GHz processor
- Low power and fanless design
- Support 6 COMs and 8 USB 2.0
- Intel® Gen 7 graphics technology



919-98F5-101



919-98F5-103



Processor	CPU	Intel® Celeron® Processor J1900/N2930	
	Frequency	2 GHz (Quad Core, for J1900) 1.83 GHz (Quad Core, for N2930)	
	L2 Cache	2 MB	
	CPU Type	BGA	
	Chipset	Integrated	
	BIOS	AMI	
Memory	Technology	Dual-channel DDR3L 1333/1066 MHz	
	Max Capacity	Up to 8GB	
	Socket	2 or 1 x 204-pin SO-DIMMs (depends on SKU)	
Display	Controller	Intel® HD Graphics	
	Graphic Memory	Shared system memory up to 1.7 GB SDRAM	
	LVDS	Dual Channel 24-bit (add chrontel 7511B chipset)	
	VGA	1	
	Multiple Display	2 independent displays	
	Display Interface	VGA up to 2560 x 1600 LVDS up to 1920 x 1200	
Ethernet	Controller	2 or 1 x Realtek® RTL8111G-CG GbE LAN (depends on SKU)	
Audio	Controller	Realtek® ALC887 HD Audio Codec	
Super I/O	Controller	Fintek F81866AD-I	
H/W Monitor	Watchdog	256-level Watchdog Timer	
	Smart Fan	Yes	
TPM	Controller	Pin header	
I/O Interface	USB	8 x USB 2.0 (4 x internal; 4 x rear)	
	Serial	6 x COM (COM1: rear, COM2~COM6: internal) COM1: RS-232, 0V/5V/12V COM 2~6: RS-232, w/o power	
	Parallel	1 (Pin header)	
	PS/2	1 (Pin header)	
	GPIO	8-bits (4 x GPI, 4 x GPO), 3.3V	
	Expansion Slot	PCIe x1	1
		Mini-PCIe	1 x Full-size (w/ mSATA)
Storage	SATA	1 x SATA 2.0	
	mSATA	1	
Power Supply	DC	DC-in 12V	
	ATX	N/A	
Environment	Operating Temperature	0 ~ 60°C	
	Operating Humidity	10 ~ 90%, non-condensing	
	Storage Temperature	-20 ~ 80°C	
	Storage Humidity	10 ~ 90%, non-condensing	
Form Factor	Dimensions	170mm x 170mm (Mini-ITX)	
	Weight	0.37 Kg	
Certification	EMC	FCC, CE, C-Tick, VCCI, BSMI	