

# CHASSIS MOUNT LARGE PCAP TOUCH

Front IP65 Chassis/Surface Mount, 43" Normal Brightness 1920x1080, Brightness 1000nits with external 100~240V AC, HDMI input, P-CAP USB controller Touch screen Clear Glass, Front IP65 / P-CAP (without AR coating) / IR control (for Brightness control)

**Model: CCHW4300HB-PCAP**

## FEATURES:

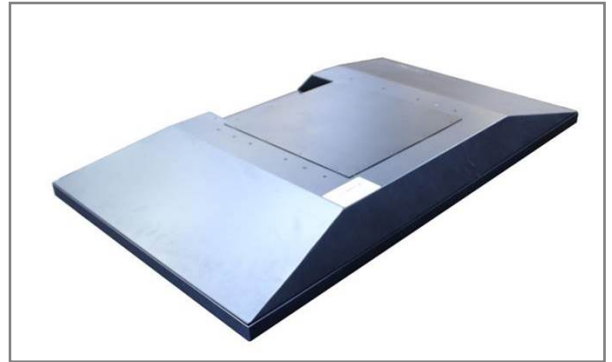
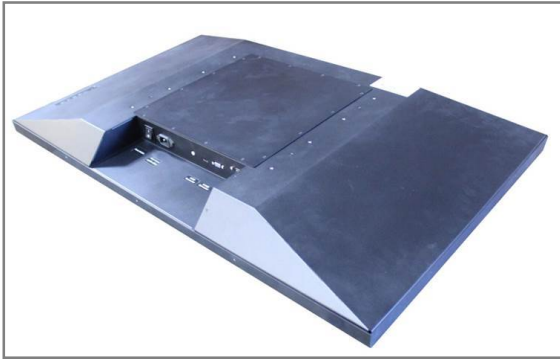
- High Contrast Monitor with resolution up to WUXGA (1920x1080)
- Modern & Customized Design
- Best sensitivity multi-touch : Projected Capacitive Touch
- High Shock & Vibration Resistance
- Widely Application: Automation, Medical, Tourist, Education...

## SPECIFICATIONS:

<b>Display</b>	Viewing Size Image	43"
	Active Display Area (mm)	945.9 (H) x 534.02 (V)
	Pixel Pitch (mm)	0.49005(H)x 0.49005(V)
	Resolution	1920x1080
	Contrast Ratio	3000:1 (typ.)
	Color	16.7M(6-bit+Hi-FRC)
	Brightness	1000 cd/irf
	viewing Angle	-89-89 (H); -89-89 (V)
	Recommended Resolution	1920 x 1080 @60Hz
	Signal Connector	VGA, DVI
<b>Power</b>	Source	AC100V-AC240V
	Consumption	64.18W typical, normal operation
	Management	VESA DPMS Compliant
<b>Optional</b>	Touch	PCAP,IR
	High Brightness	1000,1500
	Auto Dimming	YES
	Power in	DC24V
	Remote Control	YES
	IO	AV,HDMI,DP

## APPLICATIONS:





**MECHANICAL DRAWING:**

