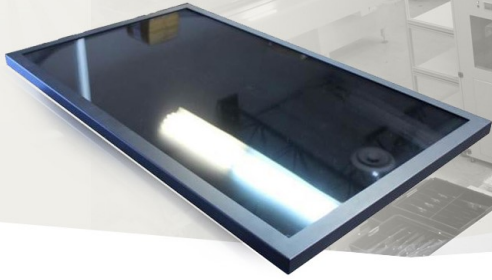


Industrial Widescreen Display Chassis/VESA Mount Metal Housing with solid back, 65" LCD monitor, 1920 x 1080, 350 nits, VGA+ HDMI +Speakers with Lexan glass front Polycarbonate Sheet

Model: CCHW6500-LX



FEATURES:

- High Contrast color TFT LCD Monitor support resolution up to FULL HD (1920 x 1080)
- Power management system conforms to VESA DPMS and EPA Energy Star standards.
- Full consideration for touch screen installation and application.
- Universal Power adapter.
- Support DDC1 & DDC2B for Plug & Play compatibility.
- Advanced OSD control for picture quality adjustment.
- Detachable stand for wall-mounting application.
- Heavy duty Monitor with steel frame.
- Custom design by request.

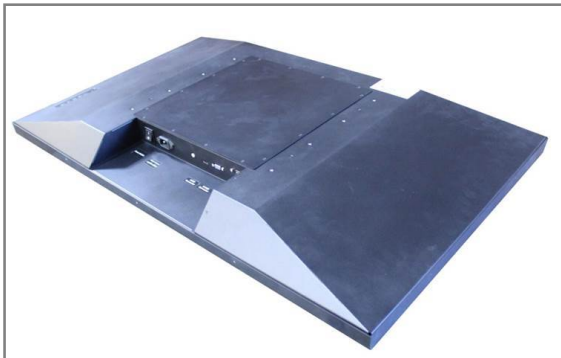
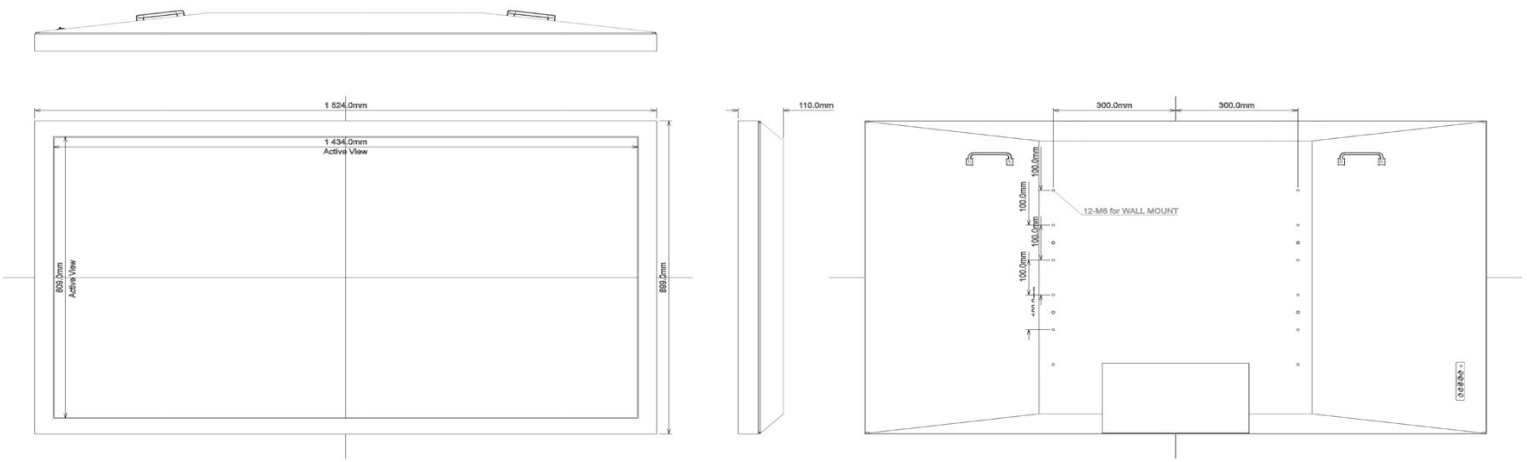
SPECIFICATIONS:

Display	Viewing Size Image	65"
	Active Display Area (mm)	1428.48 (H) x 803.52 (V)
	Pixel Pitch (mm)	0.744(H)x 0.744(V)
	Resolution	1920 x 1080
	Contrast Ratio	5000:1 (typ.)
	Color	1073.7M (10bits/color)
	Viewing Angle	-89~89 (H) ; -89~89 (V)
	Brightness	350 cd/m2
	Recommended Resolution	1920 x 1080 @ 60Hz 10bit 1.07B
	Signal Connector	VGA,DVI
Power	Source	AC100V~AC240V
	Consumption	248W typical, normal operation
	Management	VESA DPMS Compliant
Optional	Touch	Resistive, PCAP ,IR
	High Brightness	1000,1500
	Auto Dimming	YES
	POWER in	24V, 9~36V
	Remote Control	YES
	IO	AV,HDMI,DP

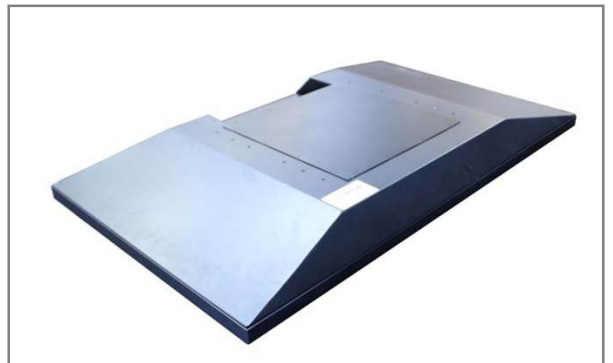
APPLICATIONS:



MECHANICAL DRAWING:



SOLID BACK



NO OPENING ON TOP



INPUT/OUTPUT



PALLET