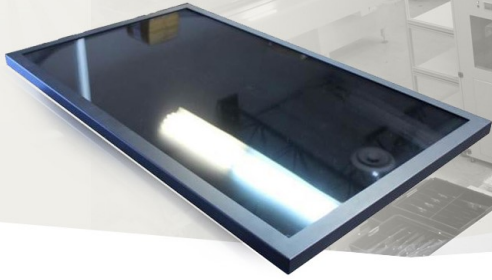


ALL IN ONE PC WIDESCREEN DISPLAY CHASSIS/VESA MOUNT

43" LCD monitor with 10-Points PCAP touchscreen with AG coating, Fan Design, 1920 x 1080, 450 nits, MS-98E1 / i7-7700 / RAM 8GB / HDD 1TB
 +Window 10 64bit Pro +Internal power supply with universal / Auto-Sensing, AC90 to 260V, 50/60 Hz with On/Off Switch
 +All screws need to be stainless steel screws
 +Power consumption: est. 151Watts /40kg net weight



FEATURES:

Model: CCPCW4300HDi7-PCAP-C1

- High Contrast Monitor with resolution up to (1920x1080)
- Modern & Customized Design
- High Shock & Vibration Resistance
- Widely Application: Automation, Medical, Tourist, Education...

SPECIFICATIONS:

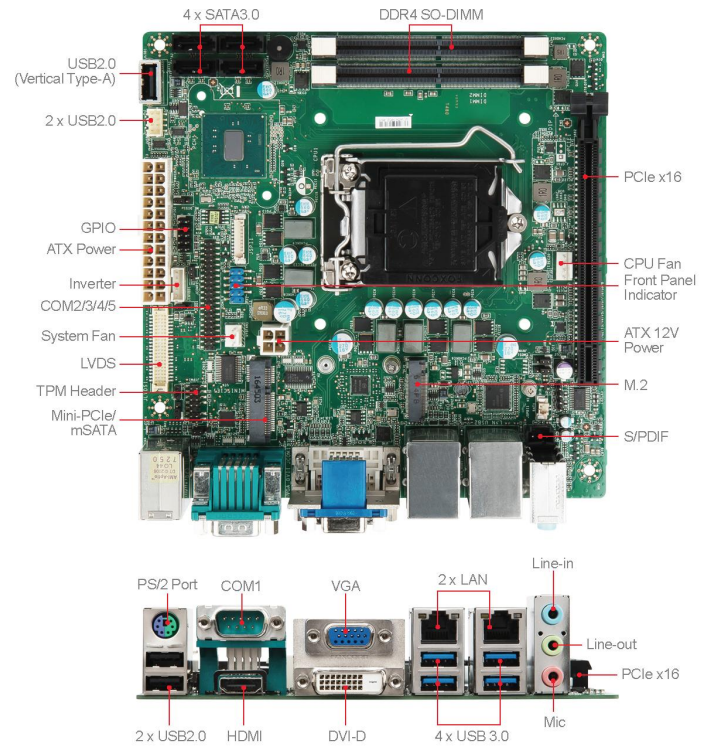
Display	Viewing Size Image	43"
	Active Display Area (mm)	942.20 (H) x 530.60 (V)
	Pixel Pitch (mm)	0.49005(H)x 0.49005(V)
	Resolution	1920x1080
	Contrast Ratio	3000:1 (typ.)
	Color	16.7M(6-bit+Hi-FRC)
	Brightness	450nits
	viewing Angle	-89-89 (H); -89-89 (V)
	Recommended Resolution	1920 x 1080 @60Hz
Power	Signal Connector	VGA, DVI
	Source	AC90 to 260V
	Consumption	64.18W typical, normal operation
	Management	VESA DPMS Compliant
	Touch	IR Touch
Optional	High Brightness	1000,1500
	Auto Dimming	YES
	Power in	DC24V
	Remote Control	YES
	IO	AV,HDMI,DP

APPLICATIONS:



MS-98E1 FEATURES

Processor	CPU	C236 SKU 7th/6th Gen Intel® Desktop Kaby Lake/Skylake Xeon/i7/i5/i3/Pentium®/Celeron Series Processor, Max 80W	H110 SKU 7th/6th Gen Intel® Desktop Kaby Lake/Skylake Core™ i7/i5/i3/Pentium®/Celeron® Series Processor, Max 65W
	Frequency	2.3GHz~4.0GHz (Depends on CPU)	
	L2 Cache	2M ~ 8M (Depends on CPU)	
	CPU Type	Socket (LGA 1151)	
	Chipset	Intel® C236 Express	Intel® H110 Express
	BIOS	AMI	
Memory	Technology	Dual-channel DDR4 (ECC) 2133MHz/2400MHz (7th Gen)	Dual-channel DDR4 (non-ECC) 2133MHz/2400MHz (7th Gen)
	Max. Capacity	Up to 32 GB	
	Socket	2 x 260-pin SO-DIMMs	
Display	Controller	Intel® HD Graphics	
	Graphic Memory	Shared system memory up to 1.7 GB SDRAM	
	LVDS	1	
	eDP	N/A	
	VGA	1	
	DVI	1 (DVI-D)	
	HDMI	1	
	Display Port	N/A	
	Multiple Display	3 independent displays	2 independent displays
	Display Interface	LVDS up to 1920 x 1200 HDMI up to 3840 x 2160 DVI-D up to 1920 x 1200 VGA up to 1920 x 1200	
Ethernet	Controller	1 x Intel® I219-LM GbE-PHY 1 x Intel® I211-AT PCIe GbE LAN (Co-layer I210-AT)	
Audio		Realtek® ALC887 HD Audio Codec	
Super I/O	Controller	Fintek F81866AD-I	
H/W Monitor	Watchdog Timer Smart Fan	256-level Watchdog Timer Yes	
TPM	Controller	Pin header	
I/O Interface	USB	4 x USB 3.0 (4 x rear) 4 x USB 2.0 (2 x rear; 2 x internal) 1 x USB 2.0 (Vertical, internal)	
	Serial	5 x COM (1 x rear; 4 x internal) COM1: RS-232/422/485, 0V/5V/12V COM2/3/4/5: RS-232, 0V/5V/12V	
	Parallel	N/A	
	PS/2	1	
	GPIO	8-bits (4 x GPI, 4 x GPO), 5V	
Expansion Slot	PCIe x 16	1	
	M.2	1 x M key (PCIe x4, SATA3.0, 2242)	N/A
	M.2 Mini-PCIe	1 x Full-size, mSATA	
Storage	SATA	4 x SATA 3.0	3 x SATA 3.0
	mSATA	1 (shared w/ Mini-PCIe)	
Power Supply	DC	N/A	
	ATX	ATX-Power 24P, 12V-4P	
Environment	Operating Temperature	0 ~ 60°C	
	Operating Humidity	10 ~ 90%, non-condensing	
	Storage Temperature	-20 ~ 80°C	
	Storage Humidity	10 ~ 90%, non-condensing	
Form Factor	Dimension	170mm x 170mm (Mini-ITX)	
	Weight	0.37 kg	
Certification	EMC	FCC, CE, RCM, VCCI, BSMI	
Software Platform	OS Support	Windows 7 (32/64-bit) Windows 8.1 (64-bit) Windows 10 (64-bit) Linux Kernel 4.X, support Fedora 23(64Bit) & Ubuntu 16.04 (64Bit) of Kaby Lake-S & Skylake-S	



- 3 independent displays with multiple video outputs (LVDS, HDMI, DVI-D, VGA)
 - Supports DirectX 11.1 and Intel® Clear Video Technology (up to 1080P)
 - 4 SATA 3.0 ports for RAID
 - Supports m-SATA function by Mini-PCIe slot
 - Plenty USB ports for more peripherals(USB3.0*4, USB2.0*4, Vertical Type USB2.0*1)
-
- 2 independent displays with multiple video outputs (LVDS, HDMI, DVI-D, VGA)
 - Supports DirectX 11.1 and Intel® Clear Video Technology (up to 1080P)
 - 3 SATA 3.0 ports for faster and high-capacity storage
 - Supports m-SATA function by Mini-PCIe slot
 - Plenty USB ports for more peripherals(USB3.0*4, USB2.0*4, Vertical Type USB2.0*1)

MECHANICAL DRAWINGS

