

# Rugged Military LCD

Rugged Mil Spec Monitor 10.4" LCD Monitor RGB Input, 800x600, 800nits Sealed to IP67 /NEMA 6 Standard, (8-36 VDC), -30C to 80C (-22F to 176F).

External cables are not included. (Pin out will be provided)

**Note: All Military grade related units are NCNR. Non-Cancelable and Non-returnable**

## Model: DMM10400R



On today's digital battlefield, rugged hardware must be designed to operate in any environment. iTech designs and manufactures highly reliable military COTS displays that meet and exceed key military specifications including MIL-STD-461, MIL-STD-810 and MIL-STD-1275.

### STANDARD FEATURES

- VGA Input (1)
- SVGA Resolution (800x600)
- Auto Scaling VGA to UXGA
- MIL-C Connectors\*
- LED Backlight (3000:1 Dimming Ratio)
- Anti-Reflective and Anti-Glare Treatments
- Enhanced Sunlight Readability
- IP67/NEMA 6 Enclosure (Sealed Connectors\*)
- Bezel Keys
- 10.4" TFT AMLCD
- MIL-STD-461, 810, 1275



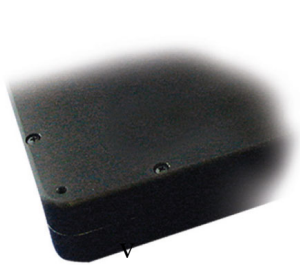
### OPTIONAL FEATURES

- Resistive Touch Screen (USB or RS232 Interface)
- XGA Display Resolution (1024x768)
- Night Vision Compatible – Monochrome Red/Green
- NVIS MIL-STD-3009 Class B White Compliant



\* - Please note cables not included.

### MOUNT OPTIONS



Panel Mount



RAM Mount



Flush Mount



RACK Mount

## SPECIFICATIONS

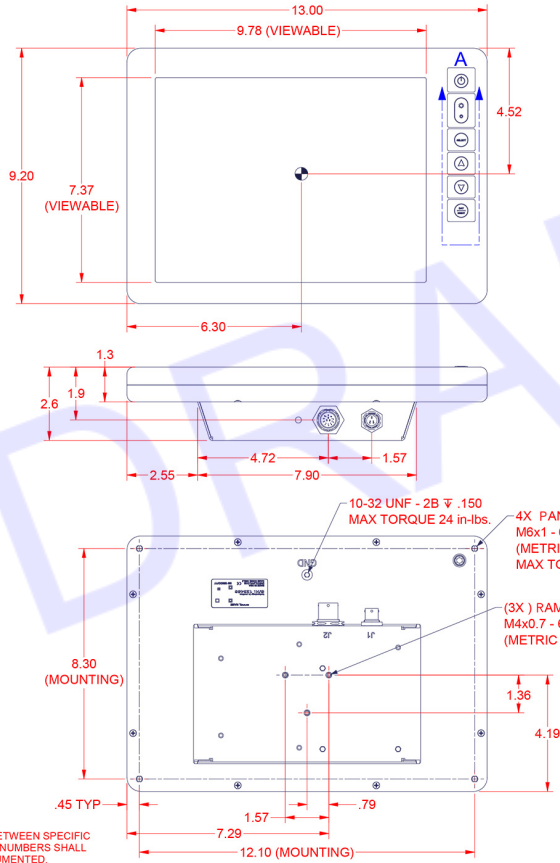
LCD Size	Resolution	Nits	Viewing Angle	Contrast Ratio	Maximum Power Consumption
8.4" TFT AM LCD	SVGA (800x600)	800 nits	160° (H) x 160° (V)	900:1	20 Watts
<b>TECHNICAL SPECIFICATIONS</b>					
Display	8-bit Color, 16,777,216 Colors. TFT AMLCD (Thin-Film Transistor Active-Matrix Liquid-Crystal Display)				
Dimming Ratio	3000:1				
Video Input	VGA				
Connectors*	MIL-C Connectors				
Housing	Milled AL, Black Hard Anodized				
Mounting	Flush, Panel, Rack or RAM; Quoted individually.				
Wide Range DC Power Input	10-36 VDC (12,24,28 VDC nominal)				
Power Conditioning	Protected against Internal Short Circuit, Load Dump, Over Voltage and Reverse Polarity				
<b>ENVIRONMENTAL SPECIFICATIONS</b>					
IP Rating	IP67 (NEMA 6 Submersible)				
Operating Temperature	-30°C to 80°C (-22°F to 176°F); (-20°C (-4°F) with Touchscreen Option)				
Storage Temperature	-51°C to 71°C (-60°F to 160°F)				
Humidity	0-100%				
Altitude	45,000 ft.				
<b>MILITARY SPECIFICATIONS</b>					
MIL-STD-461	EMI	MIL-STD-810	Method 512; Immersion		
MIL-STD-704	Aircraft Power Requirements	MIL-STD-810	Method 513; Acceleration		
MIL-STD-810	Method 500; Altitude	MIL-STD-810	Method 514; Procedure I, II, V, VI; General Vibration		
MIL-STD-810	Method 501; I & II; High Temperature	MIL-STD-810	Method 516; Procedure I, Functional Shock		
MIL-STD-810	Method 502; I & II; Low Temperature	MIL-STD-810	Method 520; Temp, Humidity, Vibe and Altitude		
MIL-STD-810	Method 503; Temperature Shock	MIL-STD-810	Method 523; Vibro-Acoustic/Temp		
MIL-STD-810	Method 505; Solar Radiation	MIL-STD-1275	Vehicle Power Requirements		
MIL-STD-810	Method 506; Rain	MIL-STD-1472	Thermal Contact Hazard		
MIL-STD-810	Method 507; Humidity	MIL-STD-3009	NVIS Compatible (Optional)		
MIL-STD-810	Method 508; Fungus	MIL-PRF-22885	Sunlight Readability for Push Buttons		
MIL-STD-810	Method 509; Salt/Fog	MIL-A-8625	Standard Finish, Type III, Class 1 & 2		
MIL-STD-810	Method 510; Blowing Sand and Dust	MIL-PRF-22750	Painted Finish, Optional, Minimum Quantity Required		
MIL-STD-810	Method 511; Explosive Atmosphere	MIL-DTL-26482	(and 38999) Connector, Qualified		

*\*Specifications subject to change without notice, not responsible for typographical errors.*

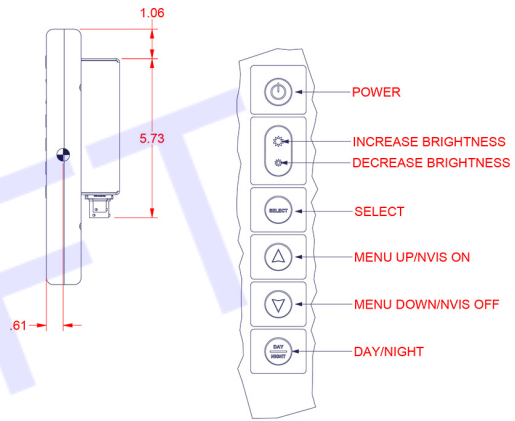
# MECHANICAL DRAWINGS

This is subject to change without Notice. Final Drawings Will be Provided for Approval after Order.

CENTER OF GRAVITY



CONNECTOR PART NUMBERS CAN VARY BETWEEN SPECIFIC VENDORS. ALTERNATE CONNECTOR PART NUMBERS SHALL MEET SPECIFIED MIL STANDARDS AS DOCUMENTED.



DETAIL A  
USER INTERFACE BUTTONS

POWER 3 PIN RECEPTACLE MIL-DTL-26482 SERIES I CONNECTOR	
PIN	SIGNAL
A	28 VOLT DC
B	28 VOLT RTN
C	N/C
Vendor p/n#	71-533721-33P (3-pin power)
Mate #	PT06E833SSR (141247)
Strain #	Included
Cable Assy#	900222

RGB 13 PIN RECEPTACLE MIL-DTL-38999 SERIES I CONNECTOR	
PIN	SIGNAL
1	Red Video Signal
2	Red Video Ground
3	Green Video Signal
4	Green Video Ground
5	Blue Video Signal
6	Blue Video Ground
7	H-SNYC
8	V-SNYC
9	H/V SYNC Ground
10	Optional Touch (USB+/RS-232 RX)
11	Optional Touch (USB-/RS-232 TX)
12	Digital Ground
13	Optional (Ring Tone Indicator)
Vendor p/n#	88-569722-35P (Video Only)
Mate #	MS27467E11B35S (141238)
Strain #	M85049/49-2-10W (141248)
Cable Assy#	900230

Drawing No.: DMM10400R-07062023-V1