

ALL WEATHER RUGGED DISPLAY

All Weather 15" Rugged Display, Composite Video Inputs (3 BNCs), XGA Resolution (1024 x 768), LED Backlight, 10ft DC Power Cable, RAM Mount, IP67 Sealed, 12-36Vdc

Model: DOD1500BNC

The slim-profile, lightweight all-weather monitor is housed in a billet aluminum enclosure with sealed connectors. Multiple mounting options allow for easy integration into confined spaces typically found in rugged industrial and mobile applications.

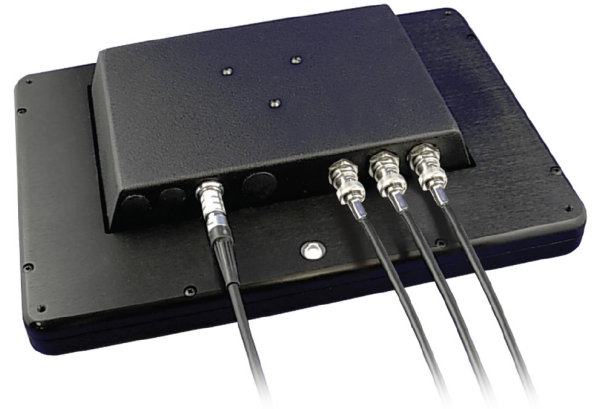
STANDARD FEATURES

- BNC Inputs (3)
- Auto Sensing NTSC/PAL
- Picture-In-Picture (PIP)
- Sealed Connectors*
- LED Backlight (3000:1 Dimming Ratio)
- Anti-Reflective and Anti-Glare Treatments
- Enhanced Sunlight Readability
- IP67/NEMA 6 Enclosure
- 8.4", 10.4", 12.1" and 15.0" TFT AMLCD
- 10 ft. Power Cable Included



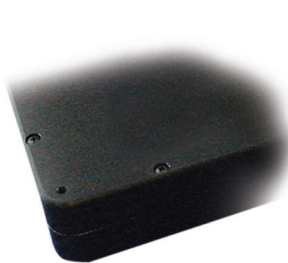
OPTIONAL FEATURES

- External VAC 120/240 Power Supply



* Video Cables not included

STANDARD MOUNTS



Panel Mount



RAM Mount



Flush Mount



RACK Mount

Optional Mounts



i-Tech Company LLC
TOLL FREE: (888) 483-2418 • EMAIL: info@itechlcd.com • WEB: www.iTechLCD.com

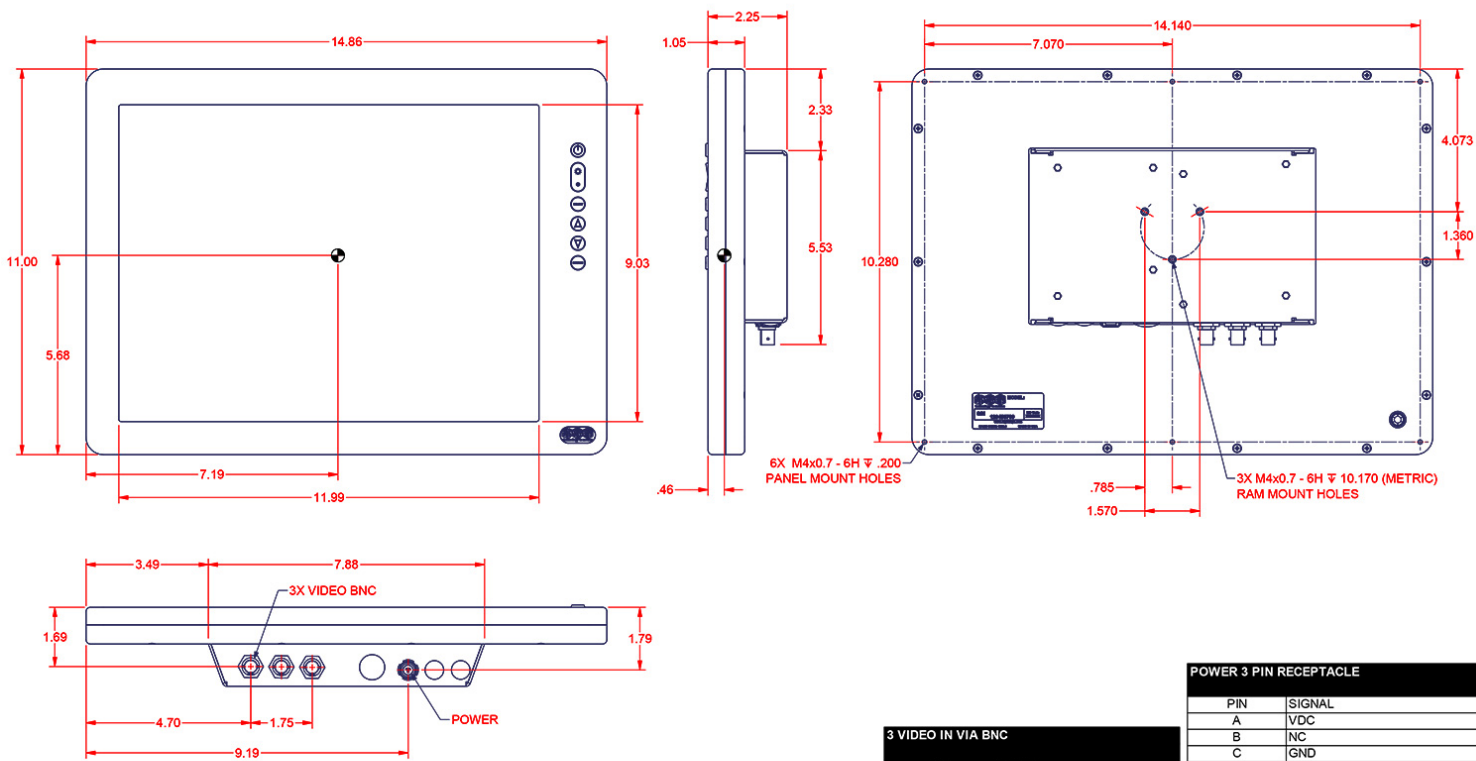
SPECIFICATIONS

LCD Size	Resolution	Nits	Viewing Angle	Contrast Ratio	Maximum Power Consumption
15.0" TFT AMLCD	XGA (1024x768)	800 nits	160° (H) x 140° (V)	800:1	40 Watts
Technical Specifications					
Display	8-bit color, 16,777,216 colors, TFT AMLCD (Thin-Film Transistor Active-Matrix Liquid-Crystal Display)				
Dimming Ratio	3000:1				
Video Input	NTSC and PAL (B, D, G, I, K)				
Connectors/Cable*	JAE to Flying Leads DC Input BNC Connector (3)				
Housing	Milled AL, Black Anodized, UV Clear Coat				
Mounting	Standard: Panel or RAM; Optional Flush or 19" Rack, quoted individually.				
Wide Range DC Power Inputt	10-36 VDC (12, 24, 28 VDC nominal)				
Power Conditioning	Protected against Internal Short Circuit, Load Dump, Over Voltage and Reverse Polarity				
Environmental Specifications					
IP Rating	IP67 (NEMA 6 Submersible)				
Operating Temperature	-20°C to 71°C (-4°F to 160°F); (-40°C (-40°F) with heater option)				
Storage Temperature	-51°C to 71°C (-60°F to 160°F)				
Humidity	0-50%				
Shock	50 G				
Vibration	5.8 G (5-500 Hz)				
Altitude	45,000 ft.				
EMI	Designed to meet FCC B, CE				

MECHANICAL DRAWINGS

THIS IS AN ELECTRONICALLY CONTROLLED AND ISSUED DOCUMENT. HARD COPY DOCUMENTS MUST BE VERIFIED AGAINST ELECTRONIC REVISION PRIOR TO USE.

CENTER OF GRAVITY



3 VIDEO IN VIA BNC	
PIN	SIGNAL
CENTER	VID_IN
SHELL	VID_GND
Cable Assy#	

POWER 3 PIN RECEPTACLE	
PIN	SIGNAL
A	VDC
B	NC
C	GND
JAE #	JB5CS03AL00 (730108)
Mate #	JB5DS03ML11 (730109)
Strain #	
Cable Assy#	900375