

1U LAY FLAT PIVOT DISPLAY DRAWER

Frame: 1U Lay Flat, 20" Rugged Transit Style With Mil Spec Rails

Display: 19" 1280x1024 LED Backlit LCD

400NITS Controller: aRGB, DVI-D

Front: Thumb Screw With Collapsible Handle

Include: 19" resistive touch sensor, Air gap install With USB Interface

Designed and Manufactured in USA

Model: DRP119-DVI-TR



The DRP Series is a high performance 1U LCD display drawer sporting a 17" or 19" LCD Monitor or optional 17.3" wide aspect LCD monitor. When needed the monitor slides out and the display portion of the monitor rotates up. You can adjust the monitor in almost any position from 0 to 125 Degrees. The Heavy-Duty Torque hinge holds it in place. Integrated Friction slides along with adjustable mounting arms allow installation in any standard 19" Rack enclosure. The drawer is held closed with a keyed cam lock or thumb screws.

FEATURES:

- All Aluminum Construction
- Customizable Modular Design
- Compact enclosure for Transit Case and Mobile applications.
- Pivoting Display Drawer
- 0-125 Degree Pivot
- Undermount Design
- Integrated Slides With Mounting Brackets

VIDEO CONTROLLERS:

V25X Embedded Controller

Max Resolution: 1920 x 1200 Input Options Available: VGA, DVI, Audio: Optional

V29X Embedded Controller

Max Resolution: 1920 x 1200 Input Options Available: VGA, DVI, Audio: Optional

V33X Controller

Max Resolution: 1920 x 1200 Input Options Available: VGA, HDMI, Display Port, Audio, Optional YPbPr

LCD DETAILS:

SXGA 1280 x 1024 (Max Res)

19" LED Backlit LCD

Viewing Angles: 89/89/89/89

Contrast Ratio: 1000:1

Brightness: 400 NITS

Response Time: 12.5ms

Operational Temp: 0-50c

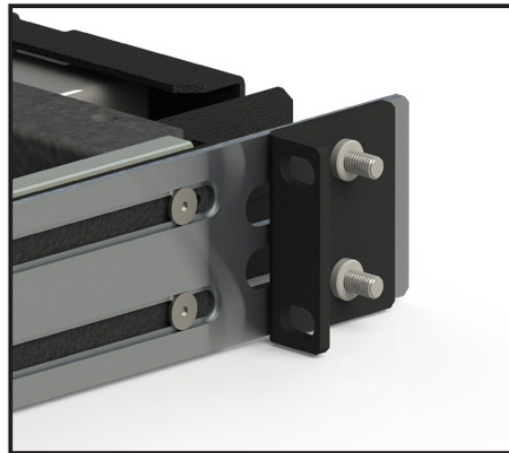
19HB - Optional High Bright: 1600 nits

FRONT FACE

Thumbscrew with 5" Collapsible Handle



TRANSIT CASE ARMS



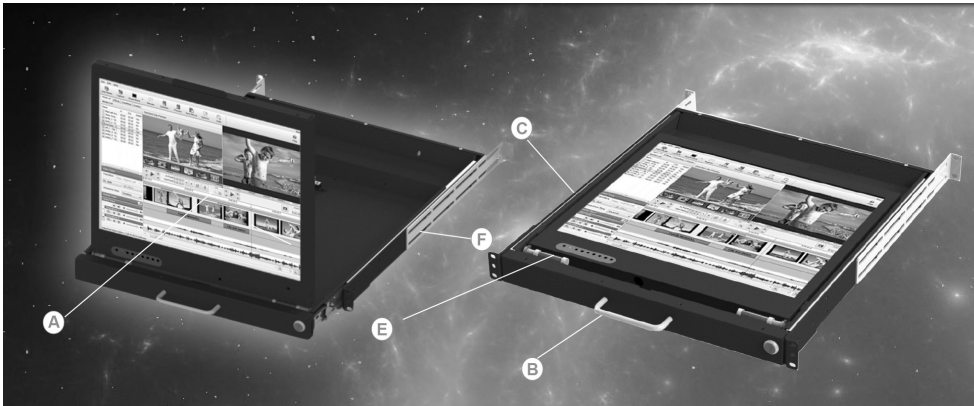
SPECIFICATIONS

Dimensions: 19" W x 1.75" H x 12" D min.

Weight: 32

Power Consumption: 35W





A: LED Backlit LCDs

Available in 17.1", 17.3", 19" each size is available in HighBright

B: Front Face

Options include handles, speakers, locks, and thumbscrews

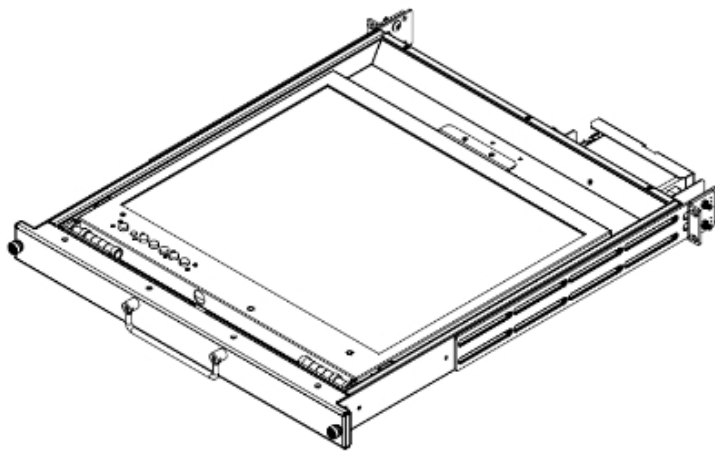
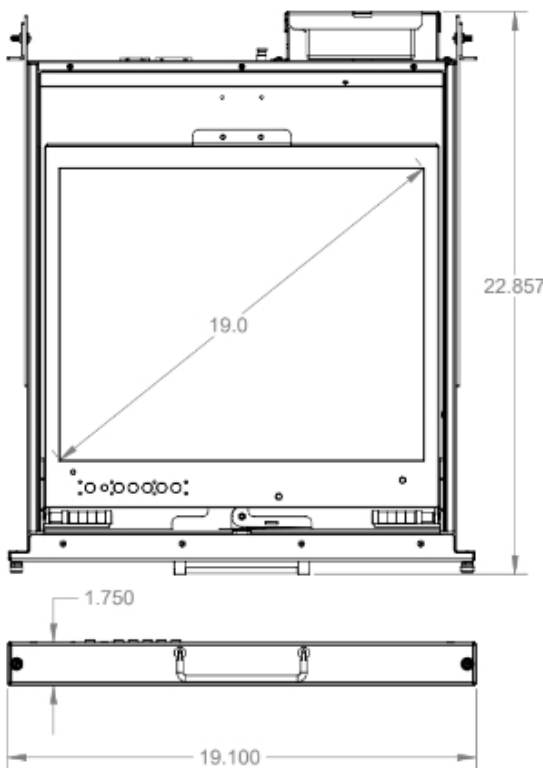
C: Mounting Arms

Adjustable configuration

E: Heavy Duty Torque Hinge

F: Integrated Slides
Military Grade Friction Slides add infinite stopping positions

DIMENSIONAL DRAWINGS



Fits 20 to 28" Rack Depth with our Standard Arms
Optional Long Arm can be Purchaes to Extent to 34" Rack Depths

