



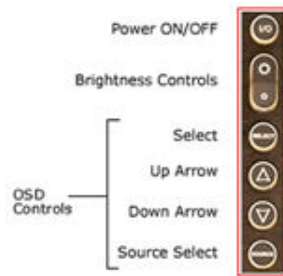
Model: DOD1000R-AV

10.4" Rugged All-Weather Sunlight Readable LCD

i-Tech's harsh-duty All-Weather Monitor (AWM) is a flat panel display, engineered to survive the most demanding applications. Designed to be rugged, the AWM handles a wide-range of extreme environments making it the industry choice for mobile applications. Housed in a milled billet aluminum case, the slim-profile AWM is light weight and watertight, with fully sealed connectors. Front-mounted controls and the optional touch screen make the monitor user-friendly. The AWM incorporates the latest optical engineering to achieve optimum view ability in all lighting conditions, including direct sunlight. The AWM's power efficient, low heat design results in the increased reliability and longevity required for mission critical deployment.



- 1 VGA Input
- 2 S-Video Input
- 3 Optional USB Input
- 4 Optional Touch Input
- 5 DC Power Input
- 6 BNC Input



Standard Features

- Auto Sensing NTSC/PAL
- 2 Video and 1 RGB Input
- Instant Source Selection Switch
- 10.4" TFT AM LCD SVGA (800 x 600)
- Brightness Range 5-700 nits
- Transflective Enhancement
- Antireflective/Antiglare Surface Treatments
- 3 Button OSD User Interface
- Milled AL Case, sealed to IP67 (NEMA 6P) Standard
- Black Anodized Finish
- IP67 Anti-Corrosion Metal Sealed Connectors
- Wide Range Input (8-30 VDC)
- Protected against an Internal Short Circuit, Load Dump, Over Voltage and Reverse Polarity
- 20 Watts Maximum Power Consumption

Optional Features

- 10.4" TFT AM LCD XGA (1024 x 768)
- USB Pass-through with IP67 Sealed Connector
- Analog Resistive Touch Screen
- Night Vision Goggle Filter (MIL-STD-3009)
- Flush Mount Bezel, IP67 Sealed
- Internal Heaters for operating to -40°C (-40°F)
- External VAC Power Supply

Specification

Technical		
Display	10.4" TFT AM, SVGA, LCD, 256K Colors (XGA Display Optional)	
Sunlight Readable	700 nits, Transflective, AR/AG 600 nits - XGA Display	
Dimming Ratio	100:1	
Video Input Connectors	RGB Input and NTSC/PAL (B, D, G, I, K) IIP67 Fischer High Density to DB-15 JAE to Flying leads DC Input JAE to DB-9 Touch (optional) JAE to USB Port (optional)	
Housing Mounting	Milled Aluminum, Black Anodized, UV Clear Coat Panel Mount or RAM Mount	
Power Consumption	6 Watts Min - 20 Watts Max	
Wide Range DC Power Input	8-30 VDC (12, 24, 28 VDC nominal)	
Power Conditioning	internal Short Circuit Protection Load Dump Protection Over Voltage Protection Reverse Polarity Protection	
Environmental		
Operating temperature	0°C to 60°C (32°F to 140°F)	
Operating temp. w/ Heater Option	-40°C to 60°C (-40°F to 140°F)	
Storage temperature	-40°C to 75°C (-40°F to 167°F)	
Shock	50 G	
Vibration	5.8 G (5-500 Hz)	
IP rating	IP67 (NEMA 6P Submersible)	
Humidity	0-100%	
EMI	Designed to Meet FCC B, CE	
Altitude	45,000 ft.	
Dimensions		
	MILLIMETERS	INCHES
Height	207 mm	8.13"
Width	295 mm	11.60"
Depth (Main Case)	28 mm	1.07"
Connector Pod Depth	29 mm	1.12"
Weight	2.3kg/ 5.0 lbs	
Cables		
Included	Power, VGA Touch*, USB*	
Not Included	BNC, S-Video	



Toll Free: 1-888-itech-18 USA Phone: 1-510-429-9288 Fax: 1-510-372-2736

E-mail: sales@i-techcompany.com 30081 Ahern Ave Union City, CA 94587 USA

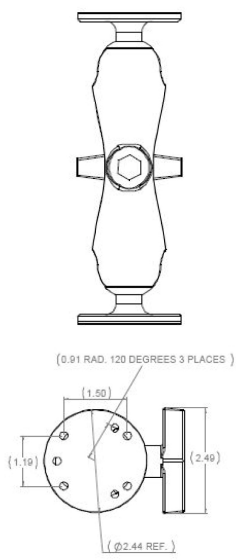
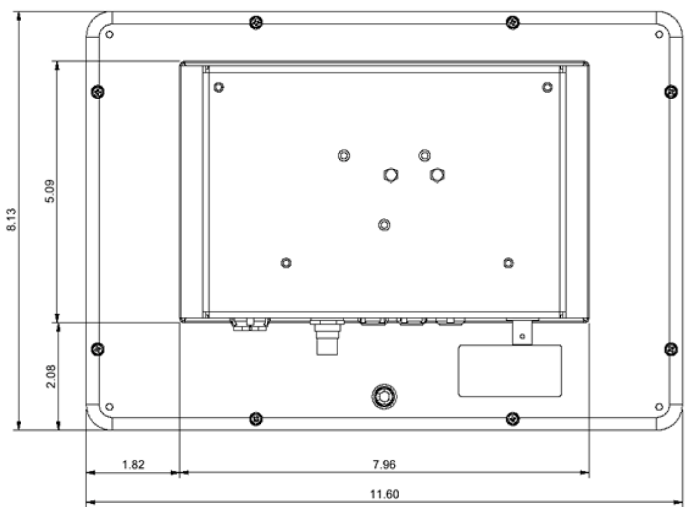
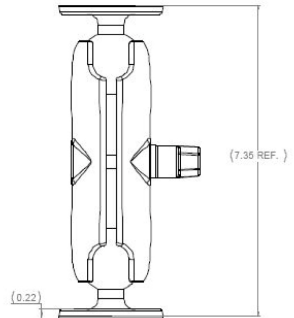
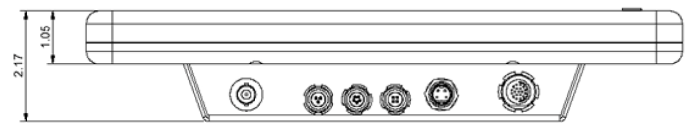
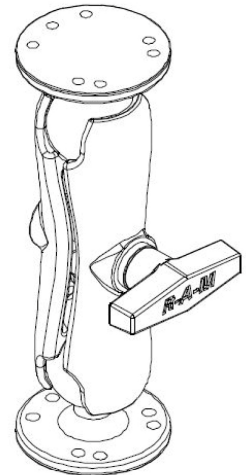
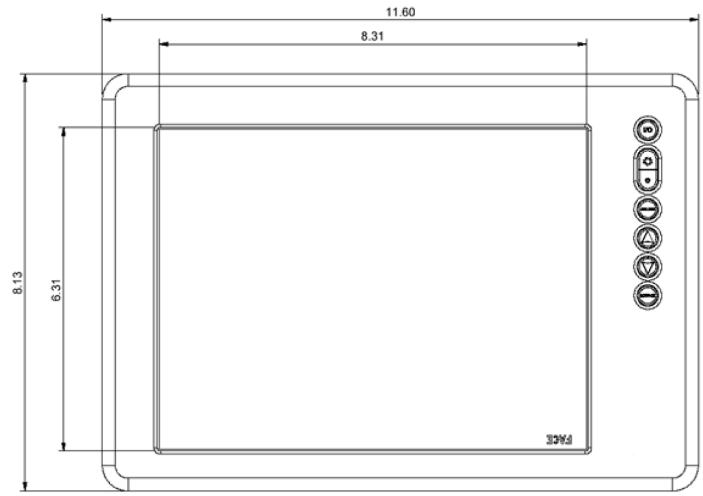
www.i-techcompany.com www.i-techcompany.com www.i-techcompany.com www.i-techcompany.com



www.i-techcompany.com www.i-techcompany.com www.i-techcompany.com www.i-techcompany.com

10.4" Rugged All-Weather Sunlight Readable LCD

Mechanical Drawing



Toll Free: 1-888-itech-18 USA Phone: 1-510-429-9288 Fax: 1-510-372-2736
E-mail: sales@i-techcompany.com 30081 Ahern Ave Union City, CA94587 USA