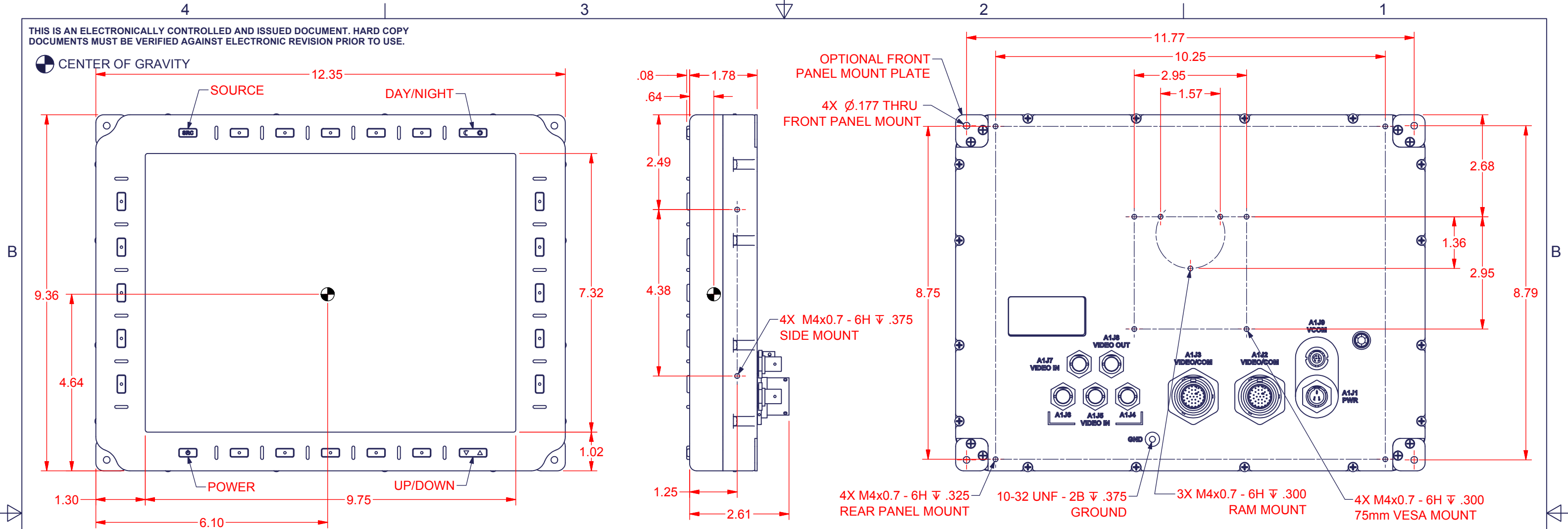
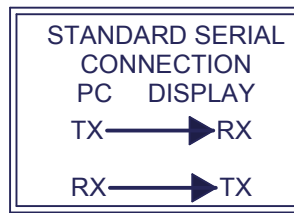


THIS IS AN ELECTRONICALLY CONTROLLED AND ISSUED DOCUMENT. HARD COPY DOCUMENTS MUST BE VERIFIED AGAINST ELECTRONIC REVISION PRIOR TO USE.



Part no. DOT1210



POWER 3 PIN RECEPTACLE MIL-DTL-26482 SERIES I CONNECTOR	
A1J1 PWR	
PIN	SIGNAL
A	28 VOLT DC
B	28 VOLT RTN
C	N/C
Amphenol #	71-533721-33P (3-pin power)
	141227
Mate #	PT06E833SSR (141247)
Strain #	Included
Cable Assy#	900222
EXT VIDEO IN VIA BNC	
A1J4, A1J5, A1J6, A1J7 VIDEO IN	
PIN	SIGNAL
1	VID_IN
2	GND
EXT VIDEO OUT VIA BNC	
A1J8 VIDEO OUT	
PIN	SIGNAL
1	VID_OUT
2	GND
7 PIN RECEPTACLE	
A1J9 VCOM	
PIN	SIGNAL
1	RS-422 Tx+ COM
2	RS-232 TXD COM
3	RS-232 RXD COM
4	DIGITAL GND
5	RS-422 RX+ COM
6	RS-422 Tx- COM
7	RS-422 Rx- COM
AMPHENOL #	803-015-07ZN6-7PN
Mate #	803-001-06ZN6-7SN
Strain #	
Cable Assy#	900272

37 PIN RECEPTACLE MIL-DTL-38999 SERIES I CONNECTOR	
A1J2 VIDEO/COM	
PIN	SIGNAL
1	DVI RX2-
2	DVI RX2+
3	DVI RX2 GND
4	DVI DDC SCL
5	DVI DDC SDA
6	DVI VSYNC
7	DVI RX1-
8	DVI RX1+
9	DVI RX1 GND
10	DVI +5V
11	DVI DDC GND
12	DVI HPD
13	DVI RXD-
14	DVI RXD+
15	DVI RXD GND
16	DVI RXC+
17	DVI RXC-
18	DVI RXC GND
19	DVI AN RED
20	DVI AN GREEN
21	DVI AN BLUE
22	DVI HSYNC
23	ANALOG GND
24	DIGITAL GND
25	USB- TOUCH
26	USB+ TOUCH
27	DIGITAL GND
28	RS-232 RXD TOUCH
29	RS-232 TXD TOUCH
30	DIGITAL GND
31	RS-232 TXD COM
32	RS-232 RXD COM
33	DIGITAL GND
34	RS-422 Tx+ COM
35	RS-422 Tx- COM
36	RS-422 Rx+ COM
37	RS-422 Rx- COM
AMPHENOL #	MS27468T15B35P
Mate #	MS27467E15B35S (141273)
Strain #	M85049/49-2-14W (141281)
Cable Assy#	900273

37 PIN RECEPTACLE MIL-DTL-38999 SERIES I CONNECTOR	
A1J3 VIDEO/COM	
PIN	SIGNAL
1	DVI RX2-
2	DVI RX2+
3	DVI RX2 GND
4	DVI DDC SCL
5	DVI DDC SDA
6	DVI VSYNC
7	DVI RX1-
8	DVI RX1+
9	DVI RX1 GND
10	DVI +5V
11	DVI DDC GND
12	DVI HPD
13	DVI RXD-
14	DVI RXD+
15	DVI RXD GND
16	DVI RXC+
17	DVI RXC-
18	DVI RXC GND
19	DVI AN RED
20	DVI AN GREEN
21	DVI AN BLUE
22	DVI HSYNC
23	ANALOG GND
24	DIGITAL GND
25	USB- TOUCH
26	USB+ TOUCH
27	DIGITAL GND
28	RS-232 RXD TOUCH
29	RS-232 TXD TOUCH
30	DIGITAL GND
31	RS-232 TXD COM
32	RS-232 RXD COM
33	DIGITAL GND
34	RS-422 Tx+ COM
35	RS-422 Tx- COM
36	RS-422 Rx+ COM
37	RS-422 Rx- COM
AMPHENOL #	MS27468T15B35P
Mate #	MS27467E15B35S (141273)
Strain #	M85049/49-2-14W (141281)
Cable Assy#	900273