

EPM1510 Series

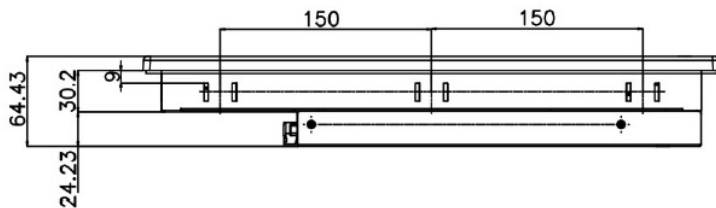
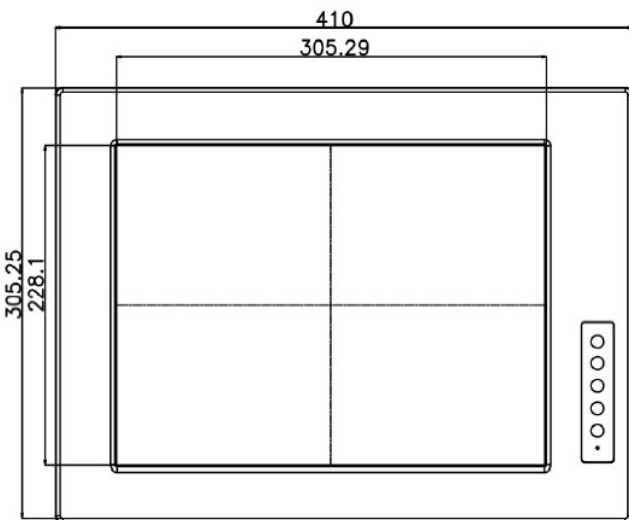
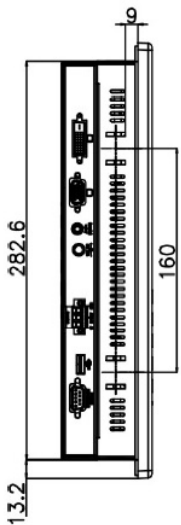
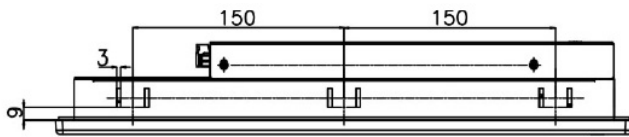
15" IP 65 Industrial Monitors, Robust, Shock Resistant with OSD Function



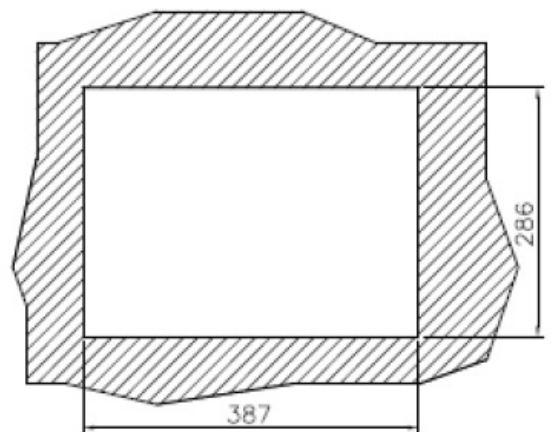
Features

- 1. Aluminum front panel meets IP 65 standard for tough working environment
- 2. Combination USB & RS-232 Touch Interfaces
- 3. Robust chassis and retention kit structure for shocking and vibration requirement
- 4. Over 300cd/m² high brightness and 50000hrs MTFB long lifetime panel
- 5. Analog VGA and DVI-D interface supports most of general system boards
- 6. Support 9~36V DC power input for mobile application

Photo Gallery



Mechanical Drawing



Cut Out

Specifications



| Model | EPM650 Series | EPM840 Series | EPM1040 Series | EPM1210 Series | EPM1510 Series | EPM1710 Series | EPM1910 Series |
|---------------------------------|--|--|--|--------------------|--------------------------|--------------------|--------------------|
| LCD Size | 6.5" | 8.4" | 10.4" | 12.1" | 15" | 17" | 19" |
| Input Interface | Analog VGA | Analog VGA | Analog VGA | Analog VGA + DVI-D | Analog VGA + DVI-D | Analog VGA + DVI-D | Analog VGA + DVI-D |
| Max Resolution | 640 x 480 | 800 x 600 | 800 x 600 | 1024 x 768 | 1024 x 768 | 1280 x 1024 | 1280 x 1024 |
| Brightness (cd/m ²) | 800 Sunlight Readable | 450 | 400 | 500 | 350 | 300 | 450 |
| Contrast Ratio | 600 : 1 | 600 : 1 | 700 : 1 | 700 : 1 | 500 : 1 | 800 : 1 | 1000 : 1 |
| Display Color | 262K | 262K | 262K | 262K | 16.2M | 16.7M | 16.7M |
| Pixel Pitch (mm) | 0.207 | 0.213 | 0.264 | 0.3075 | 0.297 | 0.264 | 0.294 |
| Viewing Angle (H/V) | 160° / 140° | 160° / 140° | 160° / 140° | 160° / 160° | 120° / 100° | 160° / 160° | 170° / 160° |
| Touch Screen | Resistive type 4-wire / RS-232 & USB interface (touch controller IC is on board) | | Resistive type 5-wire / RS-232 & USB interface (touch controller IC is on board) | | | | |
| Front Frame | Aluminum | | | | | | |
| Chassis | Heavy-duty | | | | | | |
| Input Voltage | 12VDC | 12VDC or 9-36VDC | | | | | |
| OSD Function | OSD Keypad | | | | | | |
| Smart OSD | Ye s | | | | | | |
| Mounting | Wall/Arm/ Din Panel/Rac | Wall / Panel / Rack / Arm / Stand / VESA 100mm x 100mm | | | | | |
| Color | Silver | | | | | | |
| Dimensions (W x H x D mm) | 183 x 143 x 41 | 244 x 178 x 49 | 312 x 242 x 53 | 340 x 260 x 58 | 410 x 309 x 64.4 | 452 x 356 x 65.2 | 482 x 399 x 73 |
| Operating Temperature | -10°C~50°C | | | | 0°C~50°C | | |
| Front Panel Protection | IP 65 | | | | | | |
| Net Weight | 1 kg | 1.8 kgs | 8.6 kgs | 3 kgs | 10 kgs | 3.8 kgs | 6 kgs |
| Power Adapter | 36W, 63000-FSP036RAB610-RS | | | | 60W, 63040-010060-040-RS | | |

