



65" Close Frame Monitor with 1000nits Brightness  
1920x1080 resolution, I/O: VGA/DVI/HDMI, power: 100~240V  
AC-in accessories: US type AC power cable x1, VGA cable x1, 50cm light sensor cable x1

**MODEL: GCHW6500HB-1K**

## OVERVIEW

GCH Series is a Chassis monitor designed for commercial and industrial applications at outdoors and indoors. Such as kiosks, digital signage, military, security, industrial equipment and instrumentation equipment. This product can provide high brightness / contrast to achieve better viewing effect and good reliability at wide environments conditions.

## FEATURES HIGHLIGHTS:



- Metal Chassis/Housing for higher Impact protection. (Optional for Front AR Glass or Vandal Resistant glass)
- Built-in speaker built-in speakers that allow the convenience Audio output.
- Side OSD buttons can prevent unnecessary setting changes.
- Above 24" LCD will include Front IR Sensor and Remote controller.
- Auto Video Signal ON / OFF
- Auto Always Power On



- Ultra low speed/Noise fan for extra cooling (24" LCD or above)
- VESA Mounting Hole Pattern
- Reliable built-in Power supply for 15" or above (Optional for 9-36V DC input)
- Standard VGA Input (Optional for DVI, HDMI, AV, BNC, AV looping and SDI)
- Optional for RS232 Remote Control Protocol: Command Code to set system



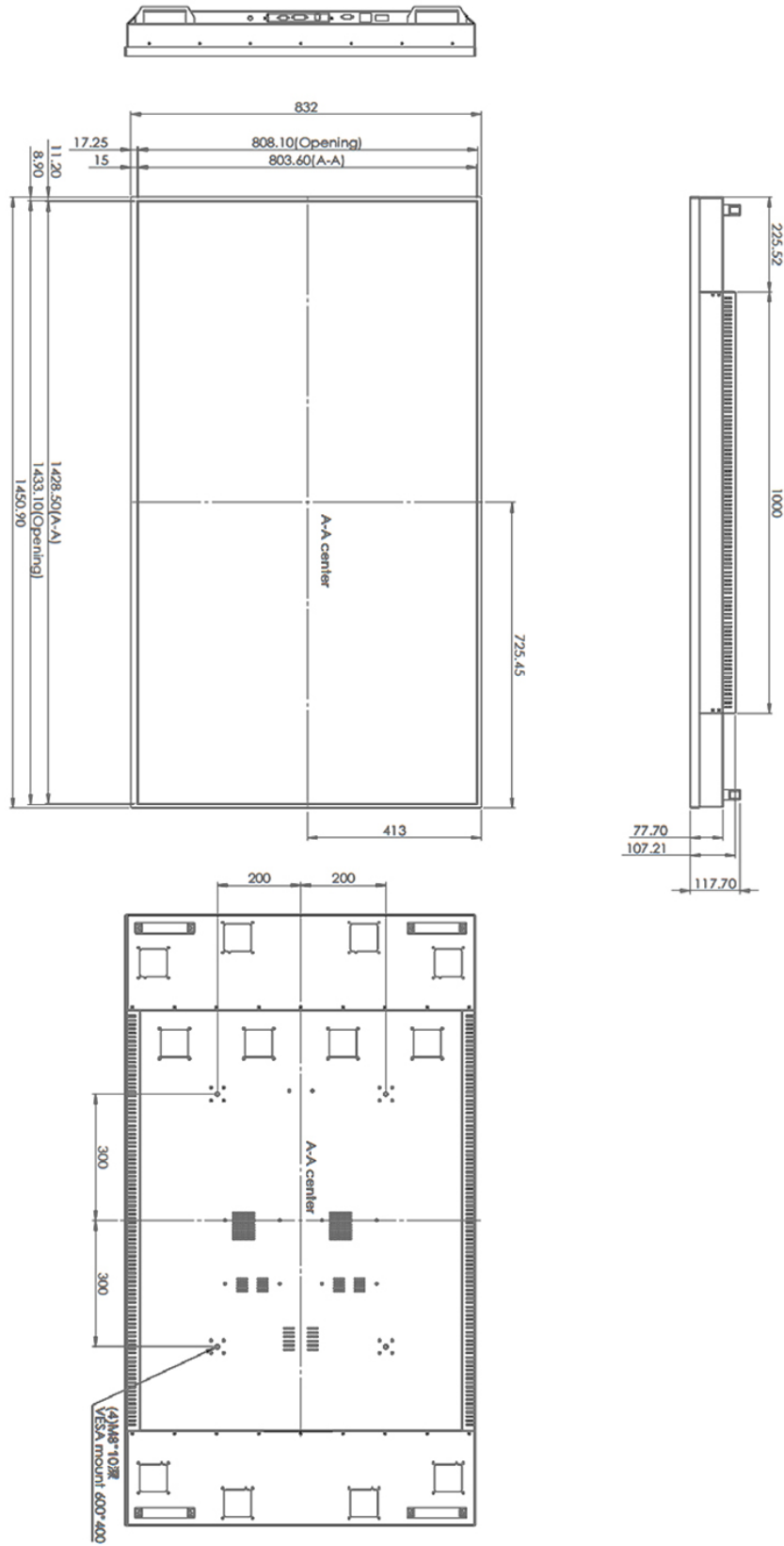
## FEATURES:

- 65" LCD support Full-HD resolution
- 1000 nits high brightness
- IPS extra wide view angle, Hi-Tni TFT
- Video signal IO: VGA / DVI / HDMI
- High reliability for 24/7 operation
- (Option) Built-in speaker / auto brightness control

## SPECIFICATIONS:

Function	Items	Description	Remark	
<b>Display</b>	Display area (mm)	1428.5 (H) x 803.5 (V)	64.53" 16:9 diagonal	
	Brightness (nits)	1000		
	Optimum resolution	1920 x 1080	IPS TFT	
	Contrast Ratio	1300:1		
	View angle (H/V)	178 /178 degree	All direction	
	Backlight Life	50,000 hours (typ.)		
<b>System</b>	Video input	VGA / DVI / HDMI		
	Video output	NA		
	Audio output	Built-in	Yes	
		Extend	(Option)	
	Memory	NA		
	Storage	NA		
	Ethernet	NA		
	Wireless	NA		
<b>Touch panel</b>	Type	NA		
	Protection glass	NA		
	Support OS	NA		
<b>Special Control</b>	Manual	(Option)		
	OSD	5 keys at back side		
	RS232	(Option)		
	Display feedback	NA		
<b>Power</b>	Power Input voltage	AC 100~240V		
	Consumption(W)	435 / (typ)		
<b>Mechanical</b>	Outline (mm)	1450.9 x 832.0 x 107.2 (D)		
	Mounting	600x400 (mm) VESA		
	Others	NA		
<b>Environment</b>	Operating temp.	0~45 °C		
	Storage temperature	-10~55 °C		
	IP protection	NA		
	Anti-vandal	(TBD)		
	Auto brightness	Yes		
	Outdoor visibility enhance	TBD		
	Direct sunlight	NA		
	Certification	CE FCC		

# MECHANICAL DRAWING:



## LCD OPTIONS:



### LED Backlight Options

Introducing LED backlight options for monitors for energy efficiency and a brighter screen.



### TouchScreen Options

Our LCD has a wide selection option to choose which touchscreen technology suits for you.

	Four-Wire Resistive	Five-Wire Resistive	Pen Touch	Capacitive	Surface Wave(Saw)	Infrared Touch (Ir)
<b>PRODUCT SIZE</b>	1.7" - 24"	10.4" - 24"	15" - 19"	12" - 24"	10.4" - 30"	10.4" - 42"
<b>TOUCH LIFE</b>	1 - 2 million touches	30 - 35million touches	100 million touches	100 million touches	50 million touches	Long-term reliability
<b>SCRATCH RESISTANCE</b>	Hard Coated	Hard Coated	Hard Coated (SiO <sub>2</sub> )	Hard Coated (SiO <sub>2</sub> )	Glass Overlay Moh's hardness rating of 7	Glass Overlay Moh's hardness rating of 7
<b>CONTAMINANT RESISTANCE</b>	Resists moisture, dirt, vinegar, ammonia based food products and cleansers	Resists moisture, dirt, vinegar, ammonia based food products and cleansers	Resists moisture, dirt, vinegar, ammonia based food products and cleansers	Resists moisture, dirt, vinegar, ammonia based food products and cleansers	Resists moisture, dirt, vinegar, ammonia based food products and cleansers	Resists moisture, dirt, vinegar, ammonia based food products and cleansers
<b>INPUT METHOD</b>	Finger, Gloved Hand, Stylus	Finger, Gloved Hand, Stylus	Stylus Pen	Finger	Finger, Gloved Hand, Soft pliable stylus	Finger, Gloved Hand, Stylus
<b>CONTROLLER</b>	USB, RS232	USB, RS232	USB, RS232	USB, RS232	USB, RS232	USB, RS232



### VIDEO Input Options:

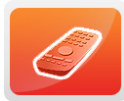
For Video inputs options:

DVI, DVI+HDMI, SVideo+AV, SVideo+AV+DVI, AV+Looping, DVI+AV+Looping, HD-SDI, BNC(PAL/NTSC)



### Optical Bonding Options

- Optical Bonding provides the best reduction of ambient light washout of any commercially available enhancement technology.
- Optical Bonding has a lower cost than most other competing technologies.
- Optical Bonding offers superior ruggedization, enhancing the display durability under vibration, shock and other environmental extremes.



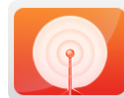
### RS-232 Remote Control Options

**Remote Control Protocol: Command Code to set system**



### 9-36V DC Input Options

iTech offers a selection of DC input from 9V to 36V



### Light Sensor and Motion Sensor Options

iTech LCD offers Light and Motion Sensor

### Privacy Filter

Front Glass Options:

- Anti Reflective AR Glass 3mm
- Anti Reflective AR Glass 6mm Vandal-Resistance
- Anti Reflective AR Glass 8mm Vandal-Resistance
- Anti Glare AG Glass 3mm