

# 1U TFT-LCD Console Drawer

## SERVIS DRAWER

### FD-1000AT

The SERVIS Drawer offers the latest, comfortable and efficient way to control server cabinets for Reliability, Availability, and Serviceability.

#### ■ FEATURES

- A 15 inch 1024 x 768 high resolution XGA TFT color LCD monitor, a membrane switch keyboard and a touch pad with 3 buttons.
- Basic drawer model supports the PS/2 keyboard and mouse interface.
- Flat modular construction for 19 inch 1U rack mounting. The 1U drawer pulls out and the display raises up like a notebook computer in use. When not in use, the display folds down and latches close and the 1U drawer pushes into cabinet easily and smoothly.
- Quick and easy installation. Slide rails are not included, available in 3 optional configurations.
- Drawer comes with space to install the 4-port Multi-KVM. Separate purchase to upgrade to I/F support for PS/2, USB, SUN I/O and USB.
- Optional built-in KVM drawer available (Server Drawer Multi)
  - I/F support: PS/2, USB, SUN I/O, USB
  - On Screen Display (OSD) function

In Hot Key Mode, the selection screen is displayed on the monitor. This display lets you assign names of PCs and select PCs using the cursor key.

  - Hot Key: any server is selected by the keyboard directly.
- RoHS compliant

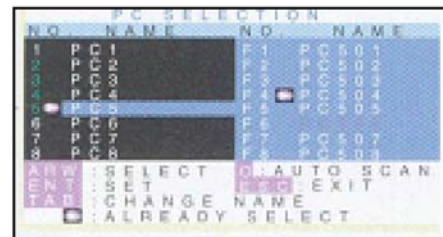
In use  
482 (W) x 1077 (D) x 345 (H) mm



In cabinet  
482 (W) x 642 (D) x 42(H) mm



Side rails



LAMP(S) INSIDE THIS PRODUCT CONTAIN MERCURY AND MUST BE RECYCLED OR DISPOSED OF ACCORDING TO LOCAL, STATE OR FEDERAL LAWS.

# FD-1000AT SERVIS Drawer

## ■ SPECIFICATIONS

| Product Name / Model |   | SERVIS Drawer / FD-1000AT  |  |   |    |
|----------------------|---|--|--|---|----|
| Part Number          |   | NC14004-B402/US R  | NC14004-B412/US R  | NC14004-B422/US R   |    |
| LCD drawer part      | 19 inch rack space requirement                                    | 1U   |  |   |    |
|                      | LDC display   | 15 inch XGA TFT color LCD  |  |   |    |
|                      | LCD resolution  | 1024 x 786   |  |   |    |
|                      | LCD supported video signal (H, V sync. signal)                    | Separate sync.   |  |   |    |
|                      | Keyboard  | # of keys  | 83 keys (US), (other languages: 84 keys (Europe), 87 keys (Japan)) |   |    |
|                      |   | I/F  | PS/2   | PS/2: to be connected to KVM part   |    |
| Touch Pad            | I/F   | Capacitive touch pad, 3 buttons, PS/2  | Capacitive touch pad, 3 buttons, PS/2: to be connected to KVM part |   |    |
| KVM part             | Supported PC/Server   | -  | Servers with PS/2, USB I/F, Sun I/O and USB servers                |   |    |
|                      | Number of server connections (max. number in cascade connections) | -  | 8 units (64)   | 16 units (256)  |    |
|                      | Selection method  | -  | Hot keys, OSD  |   |    |
|                      | LED indicator   | Power  | -  | 8   | 16 |
|                      |   | Select   | -  | 8   | 16 |
|                      | Console Port with interface                                       | Keyboard   | -  | PS/2 Mini Din 6-pin (female) x1: to be connected, Sun Mini Din 8-pin: not connected |    |
|                      |   | Mouse  | -  | PS/2 Mini Din 6-pin (female) x1: to be connected                                    |    |
|                      |   | Monitor  | -  | Mini D-SUB 15P (female) x1: to be connected   |    |
|                      | Supported interface for cascaded server                           | Keyboard   | -  | PS/2 keyboard compliant   |    |
|                      |   | Mouse  | -  | PS/2 mouse compliant  |    |
|                      |   | USB  | -  | USB 1.1 compliant   |    |
|                      |   | Sun I/O  | -  | Sun keyboard / mouse compliant  |    |
| Server cascade port  | -   | Mini D-SUB 15P (female) x 8  | Mini D-SUB 15P (female) x 16                                       |   |    |
| Auto scan intervals  | -   | 3 / 5 / 10 (default), 20 / 40 / 60 seconds   |  |   |    |
| General              | Power supply  | 100 to 240VAC  |  |   |    |
|                      | Operating environment   | 15° -35° C / 10-80%RH  |  |   |    |
|                      | Dimension (main unit)   | 482 (w) x 642 (d) x 42 (h)mm in storage<br>482 (w) x 1080 (d) x 345 (h)mm in operation |  |   |    |
|                      | Weight (main unit)  | 12kg   | 14kg   | 14kg  |    |
|                      | Included accessories  | User manual (x1), Power cable (x1)   |  |   |    |

# FD-1000AT SERVIS Drawer

## ■ OPTIONAL ACCESSORIES

|                  |   |                  |                |
|------------------|---|------------------|----------------|
| AC power cable   |   | US model         | NC14004-B074 R |
| Interface cables | PC cable  | 1.8m             | NC14000-B602 R |
|                  |   | 3.0m             | NC14000-B603 R |
|                  |   | 5.0m             | NC14000-B605 R |
|                  | USB cable                                       | 1.8m             | NC14000-B102 R |
|                  |   | 3.0m             | NC14000-B103 R |
|                  |   | 5.0m             | NC14000-B105 R |
|                  | Sun I/O cable                                   | 1.8m             | NC14000-B202 R |
|                  |   | 3.0m             | NC14000-B203 R |
|                  |   | 5.0m             | NC14000-B205 R |
|                  | Guide Rail<br>(adjustable from<br>590 to 750mm) | Inside mounting  | NC14003-T591 R |
|                  |   | Outside mounting | NC14003-T592 R |
|                  |   | Side mounting    | NC14003-T593 R |

Notes: 1. \* All US drawer models include AC power cable.

\*\* US 2-port KVM (ATL-models) includes AC adapter cable

2. Above P/N for A/C cable is US model.

|                                    |                |
|------------------------------------|----------------|
| Guide Rails                        |                |
| Standard inside mounted guide rail | NC14003-T591 R |
| Outside mounted guide rail         | NC14003-T592 R |
| Side mounted guide rail            | NC14003-T593 R |

# FD-1000AT SERVIS Drawer

## ■ SERVIS Families

| KVM                             |                                 |                   |  |
|---------------------------------|---------------------------------|-------------------|--|
| Model/Series                    |                                 | Part Number       | Description  |
| SERVIS MULTI: FS-1004MT         | 4-port KVM                      | NC14004-B042 R    | FS-1004MT 4-port multi KVM switch  |
| SERVIS MULTI: FS-1008MT         | 8-port KVM                      | NC14004-B082 R    | FS-1008MT 8-port multi KVM switch  |
| SERVIS MULTI: FS-1016MT         | 16-port KVM                     | NC14004-B162 R    | FS-1016MT 16-port multi KVM switch   |
| DRAWER                          |                                 |                   |  |
| Model/Series                    |                                 | Part Number       | Description  |
| SERVIS LCD Drawer:<br>FD-1000AT | Basic model                     | NC14004-B402/US R | 15" AT Console drawer, US version (LCD:XGA, Input Device I/F: PS/2)  |
|                                 | with built-in 8-port Multi-KVM  | NC14004-B412/US R | 15" AT Console drawer, US version with 8-port multi-KVM pre-installed (LCD:XGA)  |
|                                 | with built-in 16-port Multi-KVM | NC14004-B422/US R | 15" AT Console drawer, US version with 16-port multi-KVM pre-installed (LCD:XGA)   |
| SERVIS LCD Drawer:<br>FD-1000MT | Basic model                     | NC14010-B452/US R | 17" Console drawer, US version (LCD: SXGA, Input Device multi-interface)   |
|                                 | with built-in 8-port Multi-KVM  | NC14010-B462/US R | 17" Console drawer, US version with 8-port multi-KVM pre-installed (LCD: SXGA)   |
|                                 | with built-in 16-port Multi-KVM | NC14010-B472/US R | 17" Console drawer, US version with 16-port multi-KVM pre-installed (LCD: SXGA)  |
| Cat5Extender                    |                                 |                   |  |
| Model/Series                    |                                 | Part Number       | Description  |
| Cat5 Wide Band: FE-1000CW       |                                 | NC14004-B721/U R  | 300 m Cat5 Extender Kit of local and remote units, remote unit to be console port only, compact size: 110 (W )x 100 (D) x 25 (H)mm           |
| Cat5 Wide Band: FE-2000CW       |                                 | NC14004-B717/U R  | 300 m Cat5 Extender Kit of local and remote units , remote unit to be console port only, support audio and touchpanel (RS232: TxD, RxD only) |