

Open Frame LCD

Open Frame LCD

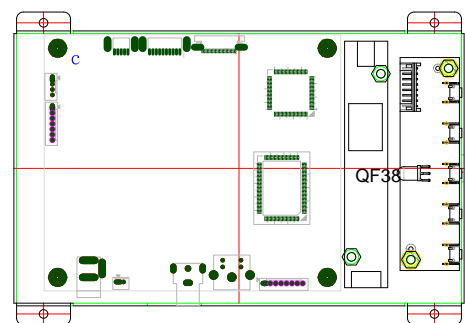
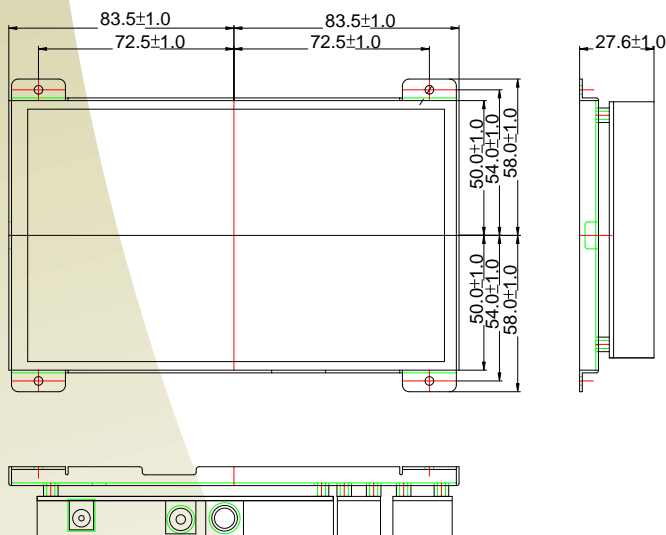
7" (16:9)

Specifications

Model Name	W07X000-OF
Viewable Size Image	7"(16:9)
Active Display Area(mm)	154.08(H)x86.58(V)
Resolution(DOT)	480*3x234(dots)
DOT Pitch(mm)	0.107(H)x0.370(V)
Number of Pixels	480(H)x234(V)
Color Configuration	R.G.B. Stripe
Contrast Ratio	300:1(typ.)
Brightness(cd/m ²)	420
Viewing Angle(CR>=10)	-60~60(H);-60~40(V)
Power Source	AC100~240V, Universal ±10%
Power Consumption	15W typical, normal operation
Power Management	VESA DPMS Compliant
Video Input	S-Video, Composite
Plug & Play	Yes
Support Video Signal Type	NTSC/PAL
Optional DVI Input	No
Optional Touch Screen	4Wire Resistive

I-TECH
COMPANY
www.i-techcompany.com
Toll Free: 1-888-483-2418
USA: 1-510-429-9288
Fax: 1-510-372-2736

Mechanical Drawing



UNIT:mm