

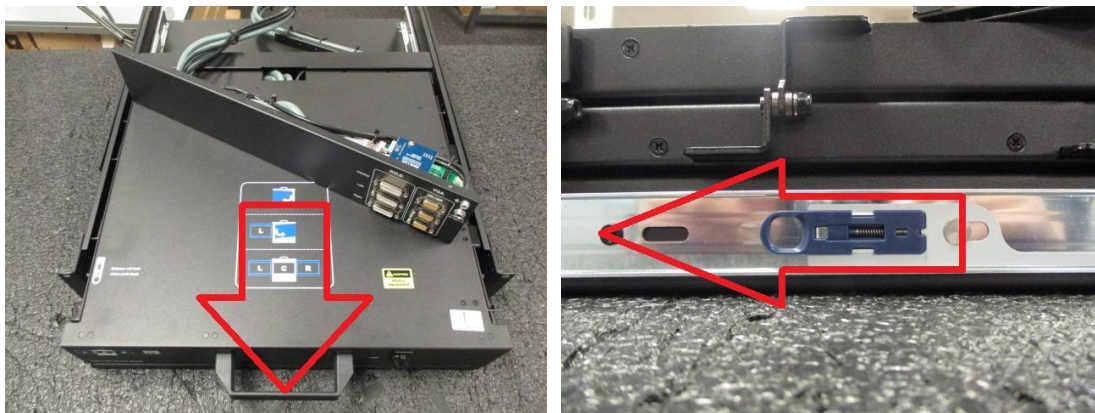
## Instruction to change internal railway NVP2D/ NVP3D/ NP2D/NP3D Series

~ Before your work, please make sure that **the power is disconnected.** ~

**Step 1:** Release the rear-kit out of bottom chassis by remove the top cover (5 screws), and 3 screws on bottom, 2 screws on each side.



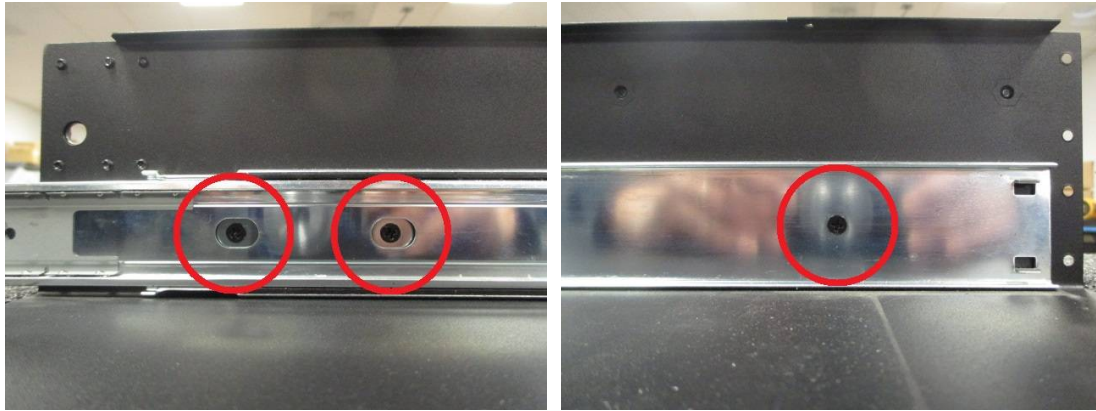
**Step 2:** Pull the drawer all the way out and release the locking mechanism to detach the drawer out of its bottom chassis, and please pull slowly and carefully to prevent the damage of falling drawer.



**Step 3:** Please release the screws on drawer to replace the 1<sup>st</sup> section of railway. (3x each side)



**Step 4:** Please release the screws on bottom chassis to replace the 2<sup>nd</sup> section of railway (3x each side)



**Step 5:** Please follow the instruction reversely to assembly the railway back to complete this instruction.