

INDUSTRIAL TOUCH MONITOR

10.1" 16:10 LCD Panel, 1920x1200, 1000:1 175° Wide Viewing Angles with HDMI and VGA signals that can be controlled by USB touch

MODEL: LECHW1010



FEATURES:

- Supports multiple video input interfaces: HDMI, VGA
- High resolution of 1920x1200 pixels
- High contrast: 1000:1
- Adopt the unique Glass+Glass technology
- Capacitive touch screen is optional
- F1&F2 user-definable buttons to custom auxiliary functions as shortcut
- Individual adjustments of Brightness, Contrast, Brightness, Saturation, Sharpness and Color Temp, etc.
- Support Scan, Check Field, Zoom, Freeze, Image Flip functions
- Equipped with 75mm VESA holes
- Compatible with sunshade, that can be used under sunlight
- Built-in high level components to support 7 to 24V power supply voltage
- Working safely with ultra-low current in any situation

HDM+VGA Interfaces

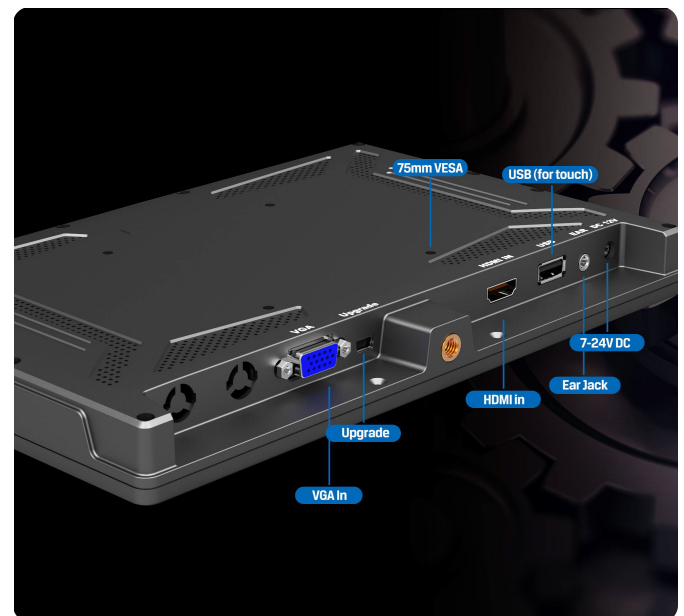
Compatible with HDMI and VGA signals. Also, the touch driver loaded by USB can realize the touch operation on the screen.

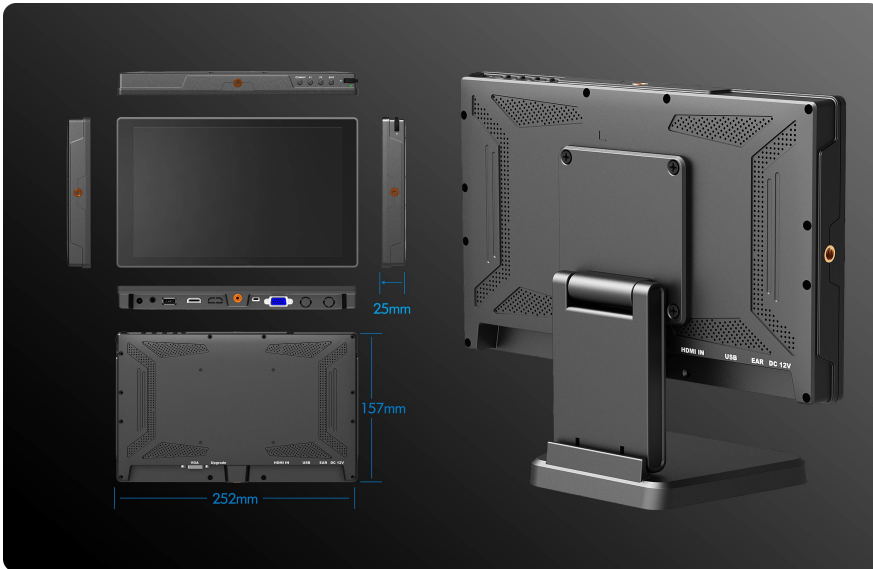
Wide Voltage Power

Built-in high level components to support 7 to 24V power supply voltage, allows to be used in more places.

Low Power Consumption

Working safely with ultra-low current in any situation, as well as the power consumption is greatly cut down.





Easy-to-use

F1 & F2 user-definable buttons to custom auxiliary functions as shortcut, for example, scan, aspect, check field, zoom, freeze, etc. Use the dial to select and adjust the value among of sharpness, saturation, tint and volume.

INPUT button. Single press to power on, or switch signals; Long press to power off.

Folding Bracket (optional)

Equipped with 75mm VESA folding bracket, it can not only be retracted freely, but save space on the desktop, wall and roof mounts, etc.

SPECIFICATIONS:

Display	Display Screen	10.1" 8bit IPS
	Physical Resolution	1920x1200
	Aspect Ratio	16:10
	Brightness	320nits
	Contrast	1000:1
	Viewing Angle	175°/175°(H/V)
Input	HDMI	HDMI 1.4bx1 (Support 4K 30Hz)
	VGA	1
	Mini USB	1 (upgrade port)
	USB	1 (for touch)
Audio	Speaker	1
	Ear Jack	1
Power	Current	≤750mA(12V)
	Input Voltage	DC 7-24V
	Power Consumption	≤10W
Environment	Operating Temp	0°C ~ 50°C
	Storage Temp	-20°C ~ 60°C
Dimension	Dimension (LWD)	252mm x 175mm x 25mm
	Weight	535g

ACCESSORIES

