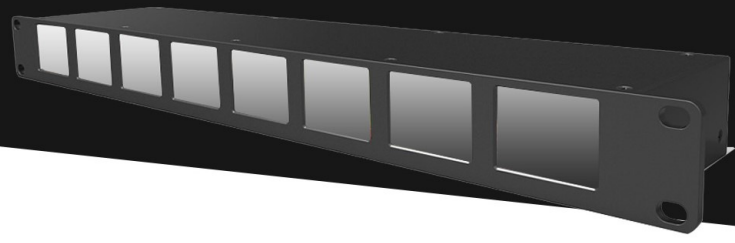


1U RACK MONITOR Metal Housing

8 x 2 inch panels with 840x240 resolution, supporting up to 1920x1080
 250cd/m² brightness, 300:1 contrast
 Input Ports: 8 x 3G-SDI, RS422, DC
 Output Ports: 8 x 3G-SDI loop
 Functions: 32 half-width characters UMD, time code, etc.
 DIP switch function
 Metal Housing, 1U Rack mount

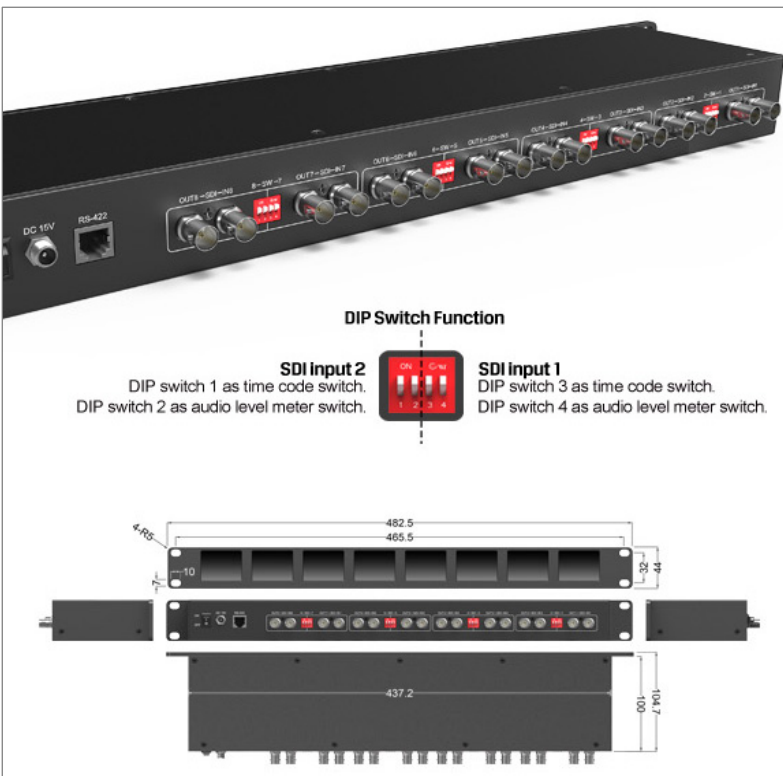
MODEL: LMS-1820



With relevant software, using laptop, PC or Mac to set and adjust functions of each monitor, such as UMD, audio level meter and time code; Even control the brightness and contrast of each monitor.



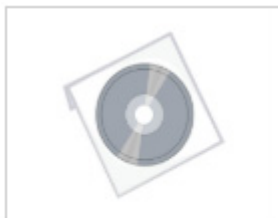
It has a various of mounting methods for broadcast, on-site monitoring and live broadcast van, etc. As well as setup a video wall of rack monitors in control room and see all the scenes, A 1U rack for a customized monitoring solution also can be supported for viewing from different angles and images displays.



SPECIFICATIONS

DISPLAY	Display Screen	8×2" 8bit TFT LCD
	Physical Resolution	640×240,supports up to 1920×1080
	Aspect Ratio	4:3
	Brightness	250cd/m ²
	Contrast	300:1
	Viewing Angle	80°/70°(H / V)
INPUT	3G-SDI	8
	RS422	1
OUTPUT	3G-SDI	8
SDI FORMAT	SMPTE-125M	480i(59.94) 1080i(60/59.94/50) 1080p(30/29.97/25/24/24sF/23.98/23.98sF)
	SMPTE-292M	1080p(30/29.97/25/24/24sF/23.98/23.98sF)
	SMPTE-296M	720p(60/59.94/50/30/29/25/24/23.98)
	SMPTE-372M	720p(60/59.94/50) 1080i(29.97/25/24/23.98) 1080p(60/59.94/50/30/29.97/25/24/23.98)
	-Level A & Level B	720p(60/59.94/50/30/29.97/25/24/23.98)
	ITU-R BT.656	576i(50)
POWER	Current	1500mA/15V
	Input Voltage	DC 12-24V
	Power Consumption	≤23W
ENVIRONMENT	Operating Temperature	-20°C ~ 60°C
	Storage Temperature	-30°C ~ 70°C
DIMENSION	Dimension(LWD)	482.5×105×44mm
	Weight	1555g

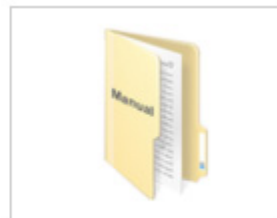
ACCESSORIES



CD drive



15V DC adapter



Manual