

CARRY-ON 4K MONITOR



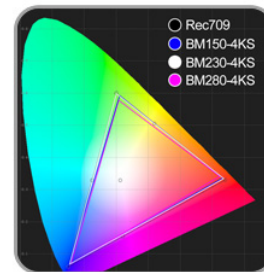
15.6 inch panel with 3840x2160 resolution
330cd/m² brightness, 1000:1 contrast, 176°/176° viewing angle
Input Ports: 4xHDMI (1xHDMI 2.0, 3xHDMI 1.4), DVI, VGA, 3G-SDI, TALLY, Audio L/R, USB
(Loading 3D-LUT), DC (XLR), Output Ports: 3G-SDI, earphone jack
HDMI 2.0 supporting 4K 60Hz, 3xHDMI 1.4 supporting up to 4K 30Hz
Wireless HDMI for optional, Supporting 3D-LUT loading, with 3 user logs
Functions: Adjustable Color space, HDR (HDMI 1), Quad view, Time code, etc.
6U Racking Mounting, VESA 75mm & 100mm

MODEL: LNP6156K-3G



Accurate Color Calibration

A specific calibration to reproduce the colors of the image color space. Color calibration supports the PRO/LTE version of LightSpace CMS by Light Illusion.



Adjustable Color Space

Native, Rec.709 and 3 User Defined are Optional for Color Space



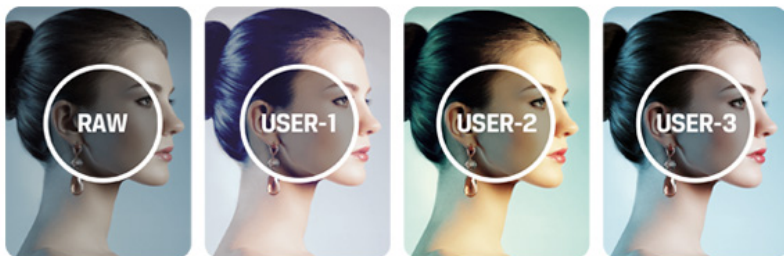
Without HDR

Inaccurate exposure, reduced image detail, unsatisfactory viewing experience.

With HDR

Enjoy sharper images, greater detail and richer colors. Auto / HDR10 are for optional.

When HDR is activated, the display reproduces a greater dynamic range of luminosity, allowing lighter and darker details to be displayed more clearly. Effectively enhancing the overall picture quality.



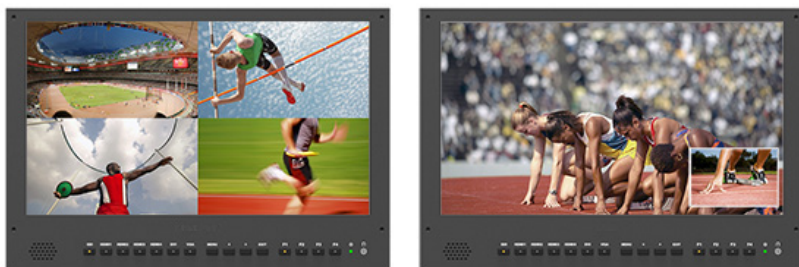
3D LUT

Wider color gamut range to make precise color reproduction of Rec. 709 color space with built-in 3D LUT, featuring 3 user logs.



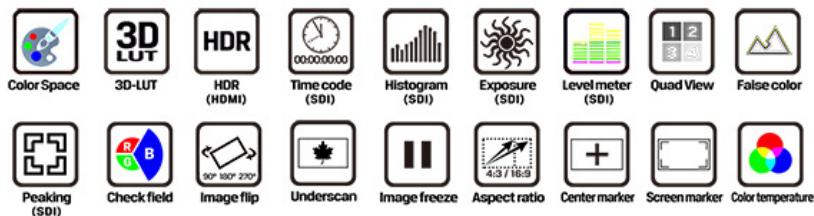
3D LUT LOAD

Supports loading the .cube file via USB flash disk.



Multiple Views Display

It supports quad views splitted from different input signals simultaneously, such as SDI, HDMI, DVI and VGA.



PEAKING FILTER (SDI)



ASPECT / CENTER / SAFETY MARKER



AUDIO LEVEL METER / HISTOGRAM



6U Rack Mount Intelligent SDI Monitoring

It has a various of mounting methods for broadcast, on-site monitoring and live broadcast van, etc. As well as setup a video wall of rack monitors in control room and see all the scenes. A 6U rack for a customized monitoring solution also can be supported for viewing from different angles and images displays.



Wireless HDMI (optional)

With Wireless HDMI (WHDI) technology, which has a 50-meter transmission distance, supports up to 1080p 60Hz. One transmitter can work with one or more receivers.

SPECIFICATIONS

DISPLAY	Display Screen	15.6" 8bit
	Physical Resolution	3840×2160, 4K
	Aspect Ratio	16:9
	Brightness	330cd/m ²
	Contrast	1000:1
	Viewing Angle	176°/176°(H/V)
INPUT	3G-SDI	1
	Wireless HDMI	1 (optional)
	HDMI	HDMI 2.0×1 (4K@60Hz) HDMI 1.4×3 (4K@30Hz)
	DVI	1
	VGA	1
	USB	1 (3D-LUT)
	Audio	2 (L/R)
	TALLY	1
OUTPUT	3G-SDI	1
AUDIO	Speaker	1
	Ear Phone Slot	1
POWER	Current	1.2A (15V)
	Input Voltage	DC 12-24V (XLR)
	Battery Plate	V-mount / Anton Bauer mount
	Power Consumption	≤18W
ENVIRONMENT	Operating Temperature	0°C ~ 60°C
	Storage Temperature	-20°C ~ 60°C
DIMENSION	Dimension(LWD)	389×267×38mm / 524×305×170mm (with case)
	Weight	3.4kg / 12kg (with case)
SDI Format	SMPTE-125M	480i(59.94)
	SMPTE-274M	1080i(60/59.94/50) 1080p(30/29.97/25/24/24sF/23.98/23.98sF)
	SMPTE-292M	1080p(30/29.97/25/24/24sF/23.98/23.98sF)
	SMPTE-296M	720p(60/59.94/50/30/29/25/24/23.98) 720p(60/59.94/50)
	SMPTE-372M	1080i(29.97/25/24/23.98) 1080p(60/59.94/50/30/29.97/25/24/23.98)
	SMPTE-425M	1080p(60/59.94/50)
	ITU-R BT.656	576i(50)
HDMI Format	4K	4096×2160 / 3840×2160
	Other	1080p, 1080i, 720p, 720i, 480p ...

ACCESSORIES



Sun shade



TALLY connector



Mount plate bracket



Fixing Belt



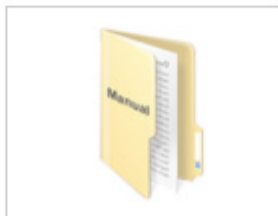
V-mount / Anton Bauer
mount



15V DC adapter



Carry-on suitcase



Manual



WHDI Accessories
(optional)