

### IP Serial Console - Cat5 Benefits

- ▶ High density IP Serial Console with either 16 or 48 ports in 1U
- ▶ Enhanced rear cable management using Cat5 cords
- ▶ Multi level authentication via local database security
- ▶ Secure Remote IP access using SSH or telnet clients

## NX1600 / NX3200 Series



### Switch Features & Options

- Use of the RJ45 Cat5 interface allows for a higher number of ports in smaller density
- Traditional Cat5 cords, when compared to coaxial cables, provide simple cable management
- Mix servers, switches, hubs and routers on one common platform
- Low complexity serial management external to, and within your data centre
- Console port buffering for quick analysis of system faults
- Simple access to serial managed devices and headless servers
- SMTP e-mail alert functions for critical events

### Designed for:

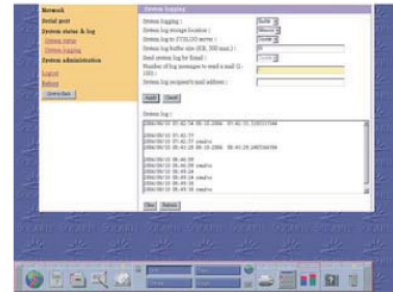


### Serial Console - Cat5

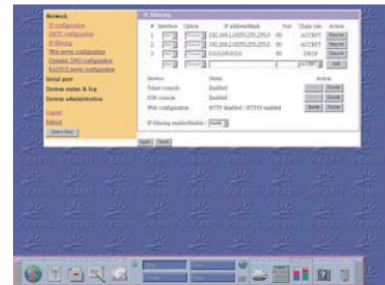
Expanding its range of server management solutions Austin Hughes introduces its new high density IP Serial console in 16 and 48 port. In today's networks and data centres we have an increasing mix of server hardware and operating systems as well as many other devices that are required to be accessed and managed from a single serial console switch. Austin Hughes provides a simple and secure solution for local and remote monitoring with access from around the world using either the TCP/IP network or simply a failsafe or redundant dial up modem connection

### Multiplatform management from a single serial console

The Austin Hughes IP serial console switch deploys SSH v2 encryption so you can be sure that your password data is secure from intruders, in addition to this port alarm user messages can be logged and sent via e-mail automatically. The Austin Hughes IP Serial management console can be used to control all your distributed devices including servers, switches, hubs and routers from one single centralised access point.



System logging via email notification



Secure remote access

Dimensions				
Model	Product Dimension (W x D x H)	Packing Dimension (W x D x H)	Net Weight	Gross Weight
NX1600	443 x180 x44 mm 17.3x7.1 x 1.73 inch	510 x400 x77 mm 20.1 x 15.7x3 inch	3.5 kg / 8 lbs	4.5 kg/10 lbs
NX3200	443 x180 x44 mm 17.3x7.1 x 1.73 inch	510 x400 x77 mm 20.1 x 15.7x3 inch	3.5 kg / 8 lbs	4.5 kg/10 lbs

Technical Specification			
<b>• Serial Port</b>		<b>• Compatibility</b>	SUN Solaris, IBM RS/6000 AIX, SCO Xenix, PC-based headless server, router, terminal server, firewall & switch
Number of ports	16or48viaRJ-45		
Connectivity:	RS-232, Rx, Tx, RTS, DTR, DSR		
Baud rate:	300 to 115200		
Flow control:	None, RTS / CTS, Xon / Xoff	<b>• Power</b>	
SUN break safe	Pass break or inhibit break	Input:	100 or 240VAC, 50 to 60 IEC type
		Option DC :	12V/24V/48V DC input
<b>• Ethernet Port:</b>	IEEE802.3 - 10/100BaseT, RJ45	Consumption :	Max. 25 Watt
<b>Authentication:</b>	RADIUS, SSH, Telnet, user database	<b>• Regulatory Approval</b>	: FCC, CE
<b>• Security:</b>	SSH v2, IP filtering, HTTPS / SSL, password access	<b>• Environmental</b>	
		Operating :	0 to 50°C
		Storage:	-10to60°C
<b>• Protocol:</b>	TCP, UDP, IP, ARP, ICMP, HTTP/HTTPS, Telnet, DHCP/BOOTP, PPP, SMTP, DNS, NTP, Dynamic DNS	Relative humidity:	90%, non-condensing
		Shock:	50G peak acceleration (11 ms, half-sine)
		Vibration :	58~100Hz / 0.98G (11 min / cycle)
<b>• Port Function:</b>	Operation modes, console server, terminal server, dial-in modem & terminal server, power controller		

