

NXT-117/11716 *New*



LCD Drawer & Console Switch Benefits

- ▶ Designed for SUN, and all other leading brands of headless servers
- ▶ Install and configure RS-232 devices across the network
- ▶ Single or "One Man" Installation slides for easy, quick installation
- ▶ 104 key notepad keyboard with full numerical pad
- ▶ Mix PS/2, USB & SUN with Multi- Platform switch capability
- ▶ Secure Remote IP access using SSH or telnet clients

Drawer Features & Options

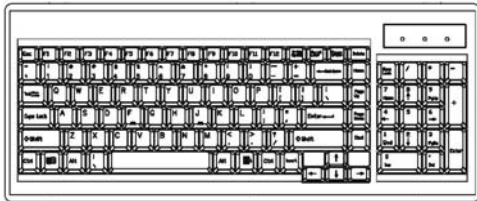
- 1U rackmount drawer with a 17" SAMSUNG LCD
- * Multiple keyboard language selections with either touchpad or trackball
- Slide rails with fixed positions to prevent drawer movement when typing
- * Optional mounting hardware for two post telco style racks

Designed for:



Keyboard

Supporting layouts



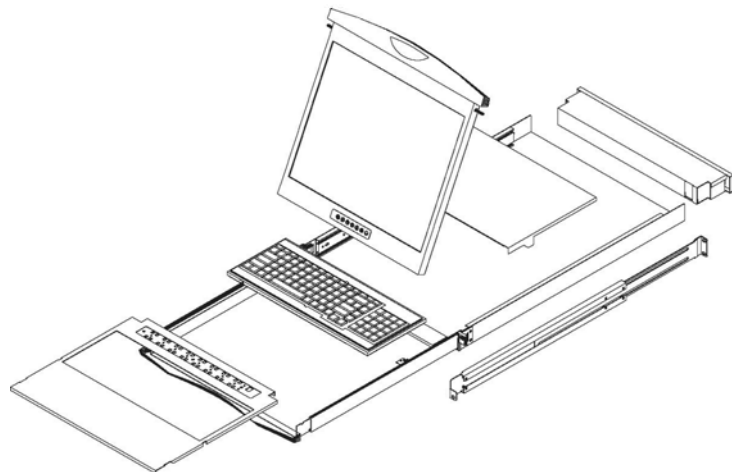
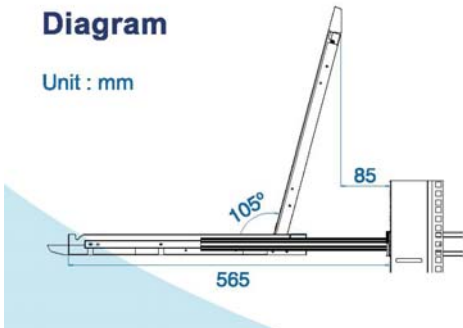
- 104 keys (US/ European/ Korean/ Chinese layout)
- 106 keys (Japan layout)

Dimensions (W x L x H)

394 x 156 x 15 (mm)
15.5 x 6.1 x 0.6 (inch)

Diagram

Unit : mm

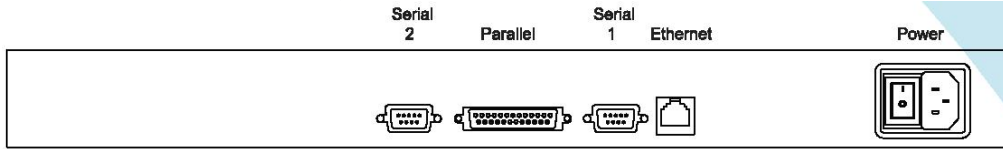


Dimensions

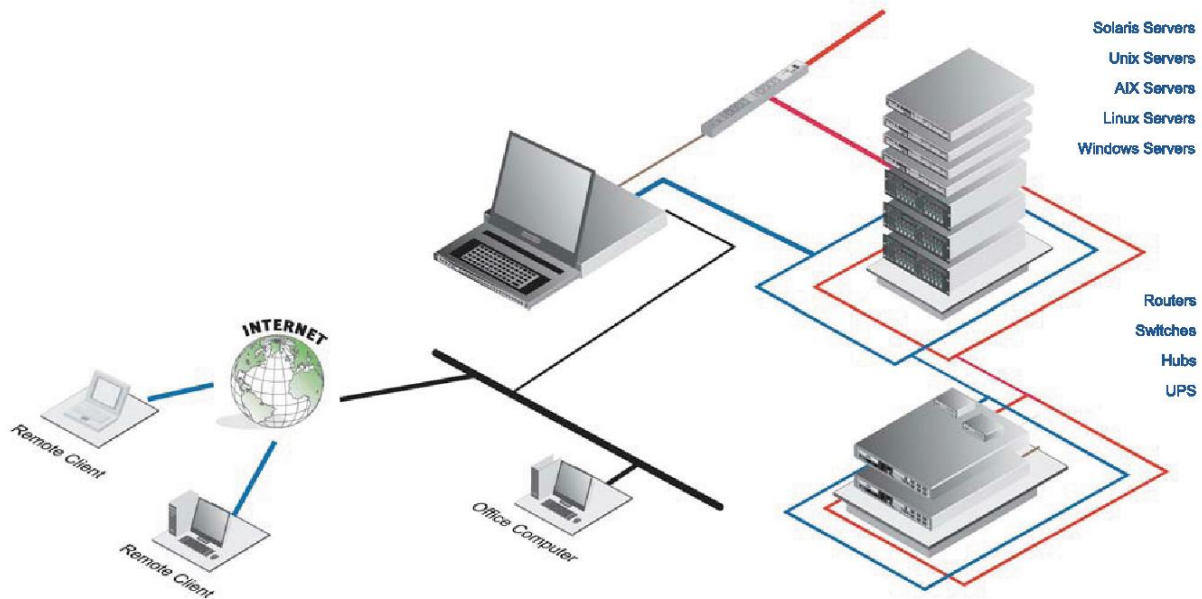
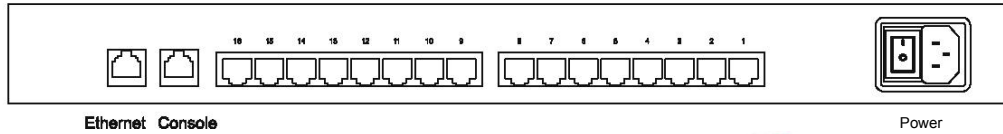
Model	Product Dimension (W x D x H)	Packing Dimension (W x D x H)	Net Weight	Gross Weight
NXT-117	442 x 650 x 44 mm 17.4x25.6x1.73 inch	589 x856 x168 mm 23.2 x 33.7 x 6.6	16 kg/35 lbs	22 kg/48 lbs
NXT-11716	442 x 650 x 44 mm 17.4x25.6x1.73 inch	589 x856 x168 mm 23.2 x 33.7 x 6.6	16 kg/35 lbs	22 kg/48 lbs

Connect your console terminal LCD keyboard drawer

NXT-117 - 1U console terminal LCD keyboard drawer



NXT-11716 - 16 port SSH secure console switch integrated into terminal LCD keyboard drawer



Technical Specification

Local Console

LCD display: Samsung 17" LCD, 800 x 600
 Brightness : 300 cd/m2
 Input device : 104-key keyboard with Num-pad

Terminal Emulations

Emulation : WY-60, WY-120, WY-50+, WY-325, ADDS A2, PCG Alpha-60, TV1910, TV1925, PC TERM, VT52, VT100, VT220, Console ANSI

Serial Port

Number of ports : 1 or 16
 Connectivity: Flow control : RS-232, Rx, Tx, RTS, DTR, DSR
 None, RTS / CTS, Xon / Xoff

Security: Remote Access (only for 16 port model)

SSH v2, IP filtering, HTTPS /SSL, password access
 Protocol: TCP, UDP, IP, ARP, ICMP, HTTP/HTTPS, Telnet, DHCP/BOOTP, PPP, SMTP, DNS, NTP, Dynamic DNS

Compatibility SUN Solaris, IBM RS/6000 AIX, SCO Unix, Xenix, PC-based headless server, router, terminal server, firewall & switch

Ethernet Port: IOBaseT, RM5
 10/1 OOBaset, RJ45 (only for 16 port model)

Power

Input: 100 or 240VAC, 50 to 60 I EC type cord 12V/24V/48V DC
 Option DC : input Max. 40 Watt
 Consumption : • Regulatory Approval: FCC, CE

Environmental

Operating : 0 to 50°C
 Storage: -10to0°C
 Relative humidity: 90%, non-condensing
Shock: Vibration : 50G peak acceleration (11ms, half-sine wave)
 58~100Hz / 0.98G (11 min / cycle)