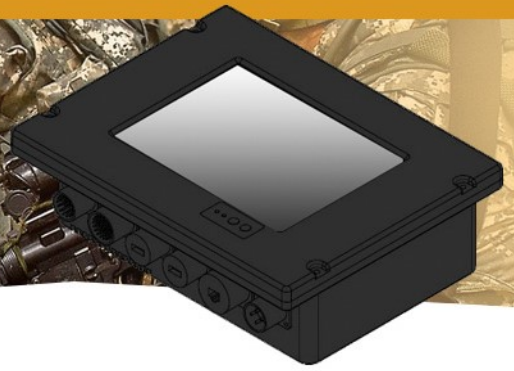


RUGGED MILITARY PANEL PC

Rugged 10.4" Panel PC, Intel E3950 Quad Core 1.6~2.0GHz, 8GB RAM, 64GB MLC SSD, 1x DC24V, 2x LAN, 2xCOM, 1x USB, 1 x USB, All military 38999 connectors, DC9~36V Input

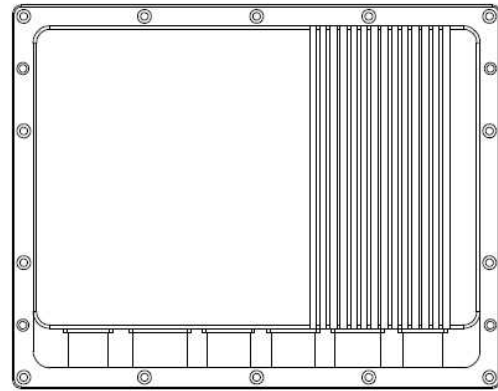
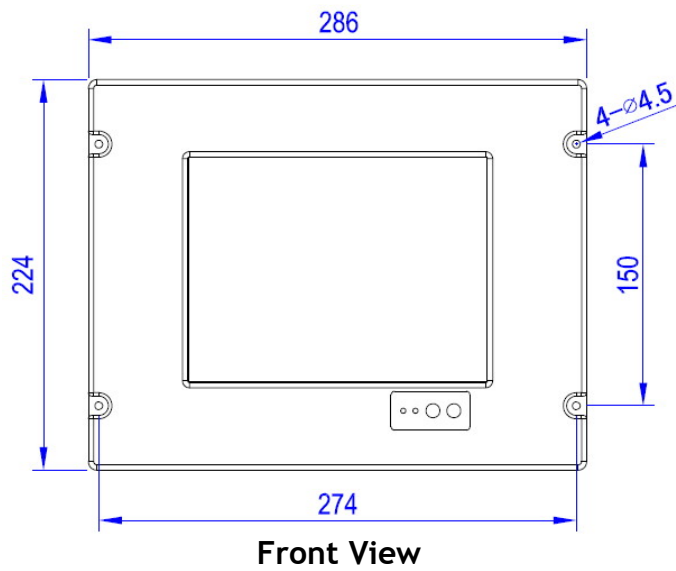


Model: Nmil-1040-KP-IP67

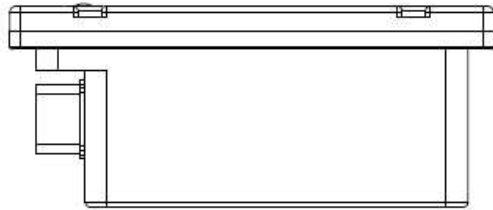
SPECIFICATIONS:

SPECIFICATIONS	Size	8.4" LCD Screen with Touch
	Processor	Intel N2930 Quad Core 1.83~ 2.16GHz
	Memory	4GB DDR3 1600 MHz memory
	Storage	64GB SSD or 120GB SSD
	IP Rating	100% Fully-sealed Aluminum CNC Housing
DISPLAY FEATURES	LCD Size	8.4" TFT LCD
	Resolution	800 x 600
	Brightness	450 cd/m2 native lumination 350 cd/m2 with touch screen overlay
	Contrast Ratio	600 : 1 high contrast
	View Angle	80 / 80 / 80 / 60 degrees
	Touch Screen	Resistive Touch
ELECTRICAL SPECIFICATIONS	Power Input	DC9~32V military grade power supply
	MIL-STD-1275	MIL-STD-1275 compliant
	Isolation	Fully Isolated protection from thunder lightening
	Polarity Reverse	Polarity Reverse Protection
	Power Consumption	8~11W total power consumption
MECHANICAL SPECIFICATIONS	Material of Housing	Aluminum Alloy, military grade
	Mount Type	Support Front Mount
	Dimensions	286 (W) x 224 (H) x 93 (D) mm
	Finish	Powder Coating
	Color	Black
INPUT / OUTPUT	USB	2 x USB with MIL-STD circular connector
	LAN	1 x Gigabit LAN with MIL-STD circular connector
	Serial Port	1 x MIL-STD connector includes 3x RS422 + 2x RS232
	VGA + DIO	1 x MIL-STD connector includes 1x VGA + 8x DIO
	DC Power	1 x DC power with MIL-STD circular connector
OPERATING SYSTEM	Windows	Support Windows 7, 8, 10
	Linux	Ubuntu, Linux, etc.
ENVIRONMENTAL TEST	MIL-STD-461	Lab Test Cost is required
	JSS-55555	Lab Test Cost is required

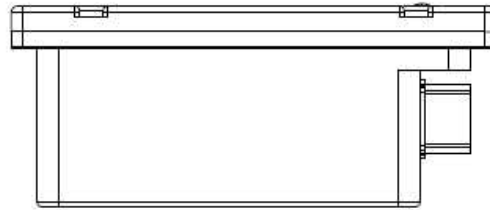
MECHANICAL DRAWINGS



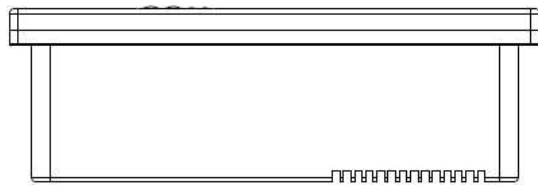
Rear View



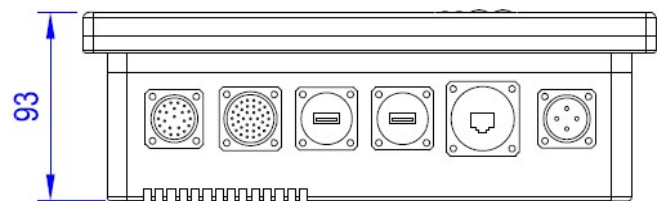
Side View 1



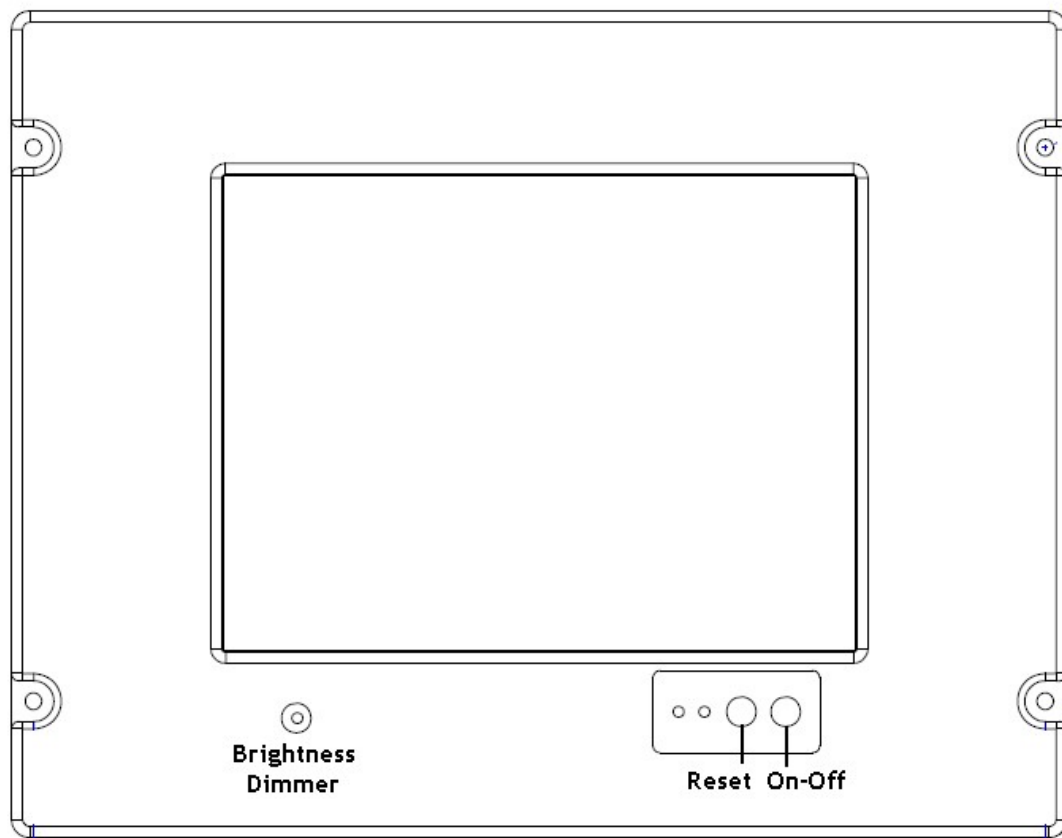
Side View 2



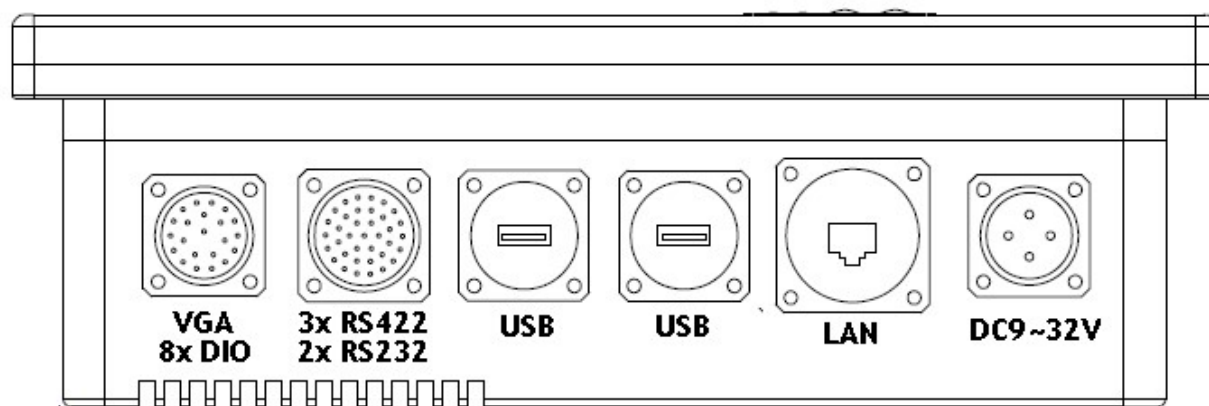
Top View



Bottom View



Brightness Dimmer, Reset, On-Off at front



I/O Ports