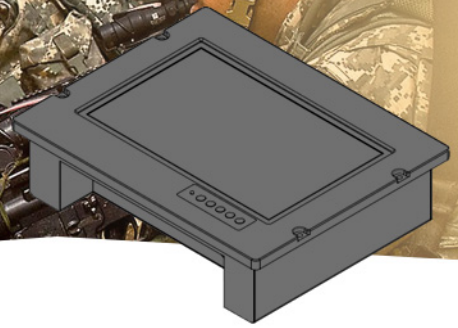


RUGGED MILITARY PANEL PC

10.1" Rugged Touch Display, 1920 x 1200 Ultra FHD,
10 Points Touch, 500 cd/m2, 1000 : 1 Contrast Ratio, 1
x VGA, 1 x DVI, 1 x HDMI, DC16~60V Input



Model: NmilW1010-PCT10

SPECIFICATIONS:

LCD Display	LCD Size	10.1" TFT LCD diagonal
	Resolution	1920 x 1200 Ultra Full HD
	Brightness	500 cd/m2
	Contrast Ratio	1000 : 1
	View Angle	89 / 89 / 89 / 89
	No. of Color	16.7 Million
	Backlight	LED backlight
Touch	Touch Type	Projective Capacitive Touch
	No. of Point	10 Points Multi-Touch
Mechanical	Front Bezel Mount	Rugged solid 10mm thick aluminum front bezel Front mount and VESA-75 rear mount
	Chassis Material Color	Galvanized rugged steel with anti-corrosion treatment Black color
	Ingress Protection	IP-54 at front
Dimension	Dimension	296 (W) x 236 (H) x 77 (D) mm
Mounting	Front Mount	Front Mount
	VESA Mount	VESA-100 Rear Mount
I/O Port	VGA	1 x VGA port
	DVI	1 x DVI port
	HDMI	1 x HDMI port
	PC Audio-in	1 x PC Audio In
	Earphone	1 x Earphone
Power Input	Power Input, Typ.	DC24~28V typical
	DC Input Range	DC16~60V, military grade power MIL-STD-1275
Power Consumption	Power Consumption	12 Watts full load
	Stand-by	0.1 W
Power Supply	Power Supply	110 Watts DC16~60V
Heater	Heater Module	Optional
Environmental Conditions	Operating Temperature	0° to +50°C
	Storage Temperature	-20° to +75°C
	Humidity	5~95% non-condensing, 20~30°C

MECHANICAL DRAWINGS

