

## Secure Modem for Remote Dial-Up Management

### Password/Dial-Back Access to your Equipment Bays Over PSTN!



#### Applications:

- Secure Dial-Up Access to Equipment Bays
- Remote Console/AUX Port Management
- Use with NetReach Series Multiport Console Switches for Out-of-Band Network Management

#### Features:

- Up to 100 Individual Passwords
- Audit Trail Log
- Remotely Configurable
- AC and -48V DC Power Options
- Powers up to Specified Answer Rings and Baud Rate
- Standard "AT" 33.6 Kbps Modem
- Watch-Dog Timer and No Activity Reset
- Nonvolatile Parameter and Data Storage

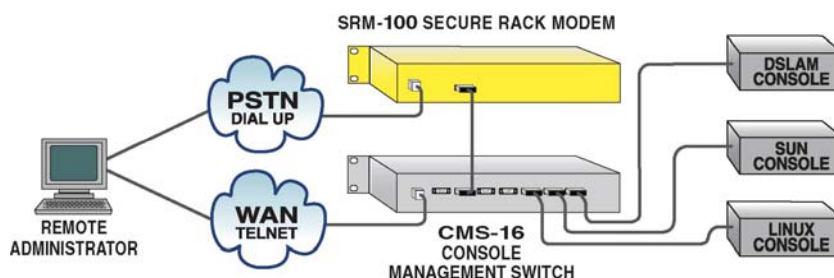
The SRM-100 Secure Rack Modem provides remote password access to serial communications equipment. Up to 100 individual passwords and dial back numbers can be stored in non-volatile memory. Designed for remote sites, the SRM always resets itself to answer on the specified number of rings and is set to a fixed baud rate at the modem port. No external "AT" commands are required to configure the modem upon power-up, which is ideal when attached to equipment that cannot send an "AT" setup string.

#### Password and/or Dial-Back Entry

The user directory stores up to 100 user names with individual password and optional dial back number. When the modem answers, "ENTER PASSWORD" is sent. If the caller enters the proper password, the connection path to the connected equipment is opened. If the directory password field contains a dial-back number, the SRM will hang-up after receiving the password, dial the number, and open the connection path when the called modem answers.

#### Access Tracking

An audit trail log tracks valid and/or invalid password connections, the time and date of each connection and duration of the call. The SRM stores a snapshot of the last 100 connections, which can only be viewed by the system administrator. In addition, the Password Directory displays the accumulated number of successful connects for each password.



Typical Out-of-Band Management Application

# SRM Series - Secure Rack Modem



115/230 VAC Powered Unit



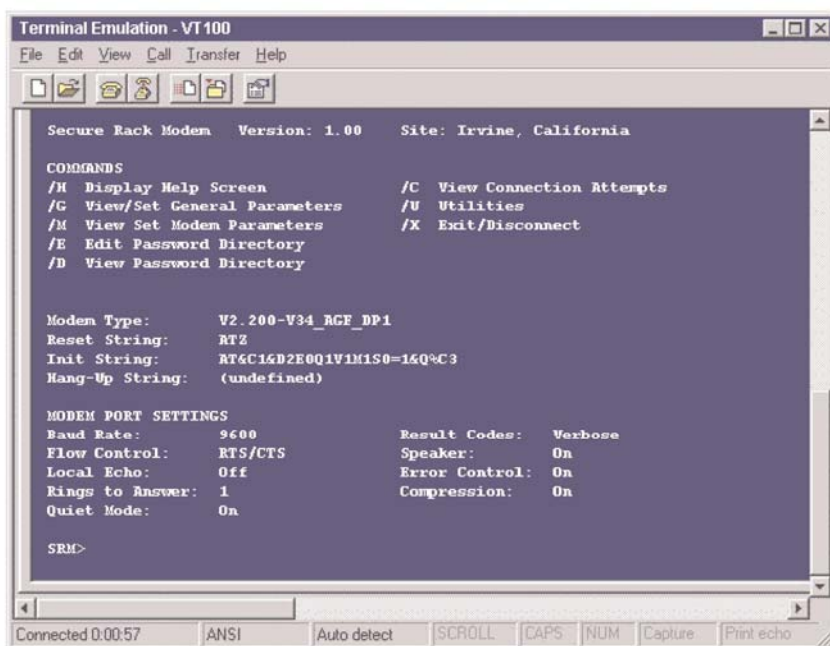
-48 VDC Powered Unit

## Local or Remote Configuration

A serial DB9 console port is available to configure the system and view parameters. This port can also be accessed remotely by the system administrator to communicate to a secondary serial device other than the modem port, such as a reboot switch. A user selectable System Password allows access to the command menu to enter/edit passwords and set system parameters including modem settings. This makes remote installation a breeze. Simply plug in the power and phone line and the system administrator can call the SRM and download all parameters either by keystroke or ASCII file.

## Reliability and Support

The SRM is built in the USA and backed by a one year warranty. NetReach products are installed in thousands of network sites worldwide. Our customers know they can depend on superior quality and reliability for their most mission-critical operations.



## Specifications

### Compatibility:

ITU-T V.22 bis (2400 bps) to ITU-T V.34+ (33.6 Kbps)

Bell: 212/V.22, 103/V.21

### Command Set:

Connexant Chipset  
Industry Standard "AT" Commands

### Supports:

V.42/MNP 2-4 Error Control  
V.42bis/MNP 5 Data Compression

### Modem Port:

Interface: RS-232C, DB-25S

Rates: 300 to 38,400 baud

Buffer: 32K

Flow Control: None, RTS/CTS, XON/XOFF, Both

Rings to Answer: 1 to 32

No Activity Timeout: 1 to 30 Minutes

### Console Port:

Interface: RS-232C, DB-9P

Site ID: 32 Characters Max.

System Password: 16 Char., Case Sensitive

### User Password Directory:

Passwords Allowed: 100 Max.

Password Field: 16 Char., Case Sensitive

Dial Back Field: 32 Digits

### Power:

AC Model: 115/230 VAC, 50/60Hz, 10 Watts

DC Model: Dual -48 VDC Inputs, 0.1 Amp

### Physical / Environmental:

Size: 1.75"H x 19"W x 6.0"D

Weight: 5 Lbs, Shipping Weight

Temperature: (Operating) 0°C to 34°C

Humidity: 10 to 90%, Non-Condensing

### Ordering Information:

SRM-100AC: 115/230 VAC Powered Modem

SRM-100DC: -48 VDC Powered Modem

SRM-23R: 23 Inch Rack Adapter Kit



### Distributed by

i-Tech Company LLC

TOLL FREE: (888) 483-2418

EMAIL: [info@i-techcompany.com](mailto:info@i-techcompany.com)

WEB: [www.i-techcompany.com](http://www.i-techcompany.com)