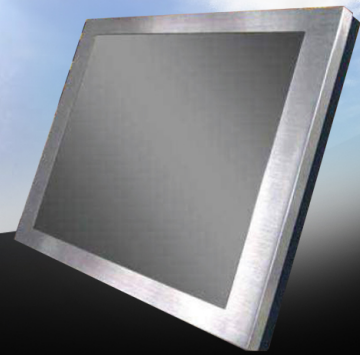


# Fanless Front Stainless PANEL PC

15" Panel PC Fanless Front Stainless Panel Bay Trail J1900 Quad Core 2.0 GHz , 2GB, 320G HDD SATA, IP65 in front with Resistive Touch HDD Anti-vibration. ( Mounting: VESA/Surface mount Only )



Model: **PNPC1500BT**

## FEATURES:



■ IP65 in Front & Side Frame



■ HDD Anti-Vibration Easy-install Kit

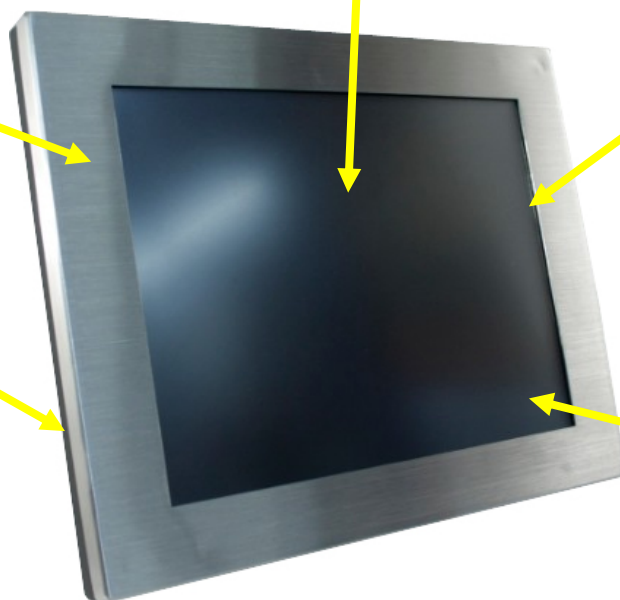


■ Ultra Slim Design (66mm)

**True Fanless Panel PC: Fanless, lower power consumption all in on PC with stainless steel Front bezel.**

**Stainless Steel Front Bezel:**  
Reduced dirt adhesion for easier cleaning and maintenance

**Built in Speakers at the side**

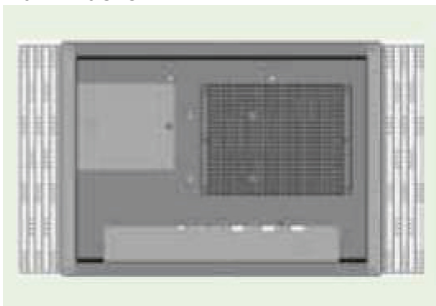


**IP65/NEMA4:**  
Front Water and dust proof. Totally protected against dust, Protected against low pressure jets if water from all directions, limited ingress permitted

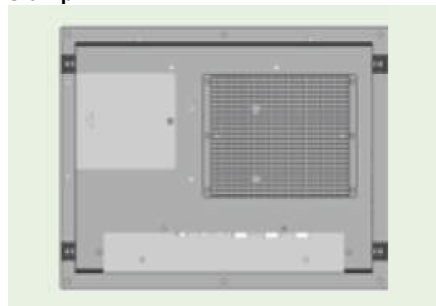
**5 Wire Resistive Touch:**  
long life. Its durability and reliability are the features which make it enable to incorporate in heavy industry machinery, commercial markets and electronic equipment

## Wall-Mount

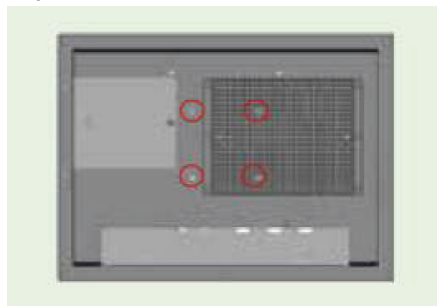
Flank Bracket



Clamp



VESA



**Side Easy Access I/O:**

COM3

Side ON/OFF.

LED Light



**Easy Install HDD Tray:**  
One screw away to remove the HDD easy for access and service

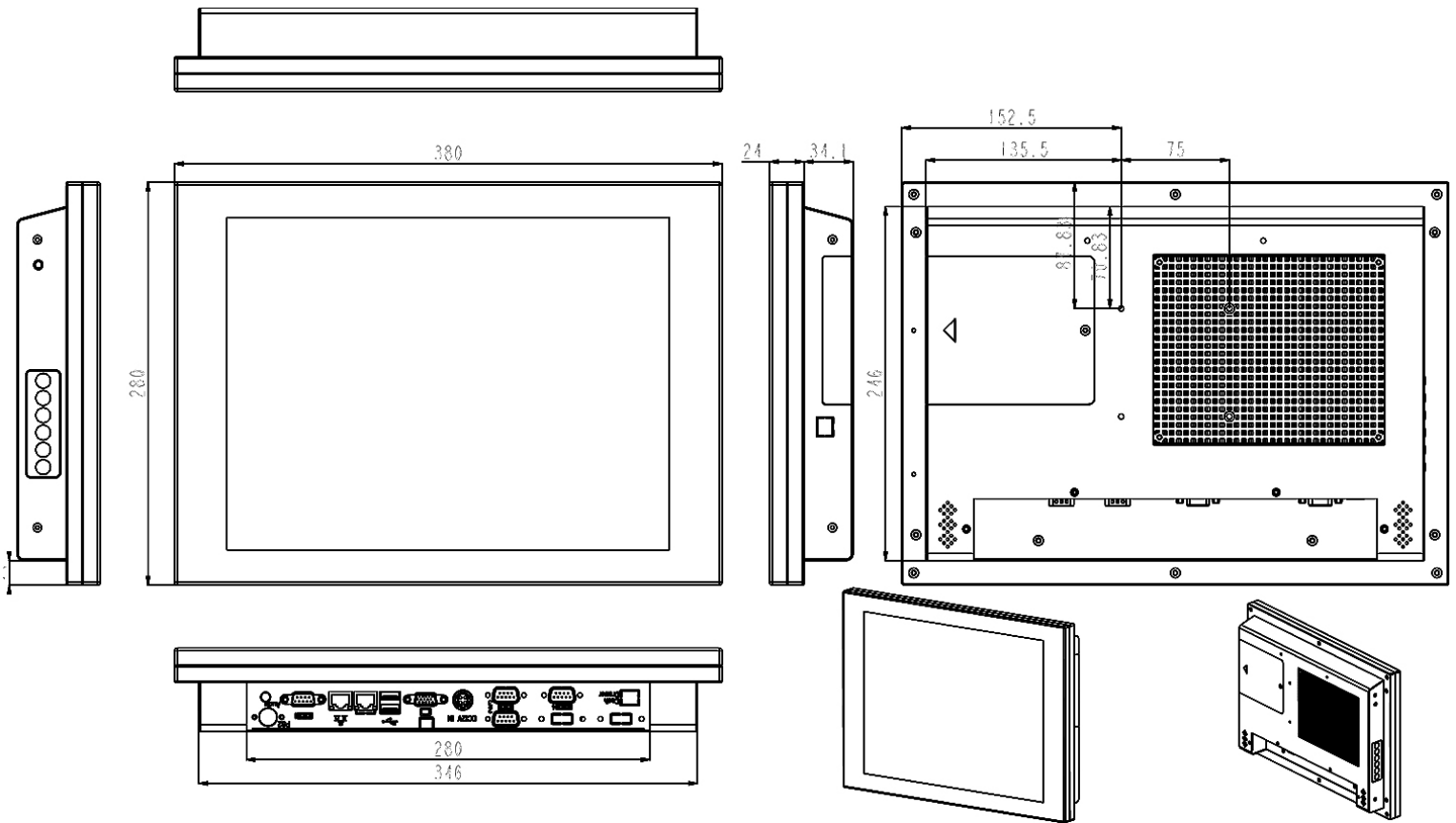
**VESA mounting at the back**

**SPECIFICATIONS:**

<b>System</b>	
Motherboard Type	Intel
Form Factor	Bay Trail J1900 ( Quad Core 2.0GHz )
CPU	Intel
System Chipset	CPU Integrated
FSB	1066/1333MHz
DIMM Socket	2GxDDR3L ( max to 8G )
Graphic	Intel Integrated Graphic HD4000
Audio	Realtek AL662
LAN Controller	Realtek RLT8111G Gigabit LAN
I/O Connector	1LAN/4 USB 2.0/1 USB 3.0/3 RS323/1 VGA/1 PS/2/Audio Line-in/out 2LAN/2 USB 2.0/1 USB 3.0/3 RS323/1 VGA/1 PS/2/Audio Line-in/out
<b>Display</b>	
Size	15"; 1024x768
Contrast Ratio	700:1
Brightness	250 cd/m <sup>2</sup>
<b>Mechanical</b>	
Touch	Taiwan 5wire Resistive Touch Default
Device	320GB 2.5" SATA HDD Default
Power Supply	ADAPTER 12V/7A 84W ( S-JACK-4 ) ( RoHS )
Bezel	Stainless
Dimension	380x58x280 mm ( WxDxH )
Operating Temp	0°~40°C ( Fanless )
Relative Humidity	10%~90%@50°C,Non Condensing
Vibration	5-17,0.1"Double Amplitude Displacement,17~640Hz
Shock	10-25Hz(X,Y,Z direction 2G,30 minutes)
Features	IP65 in Front & Side Frame



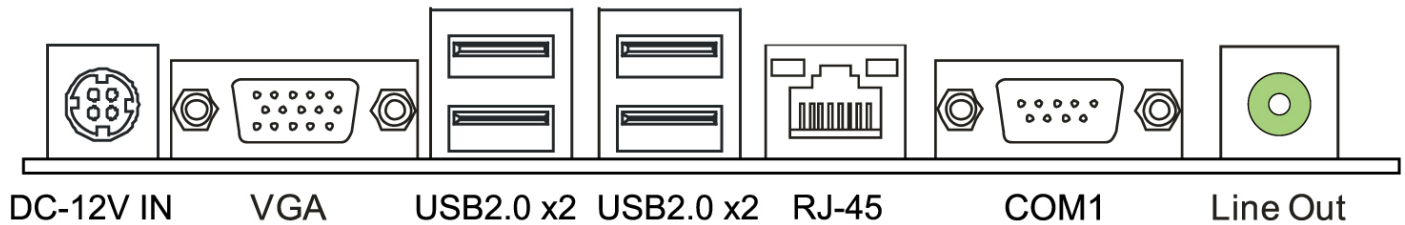
**Dimensions:**



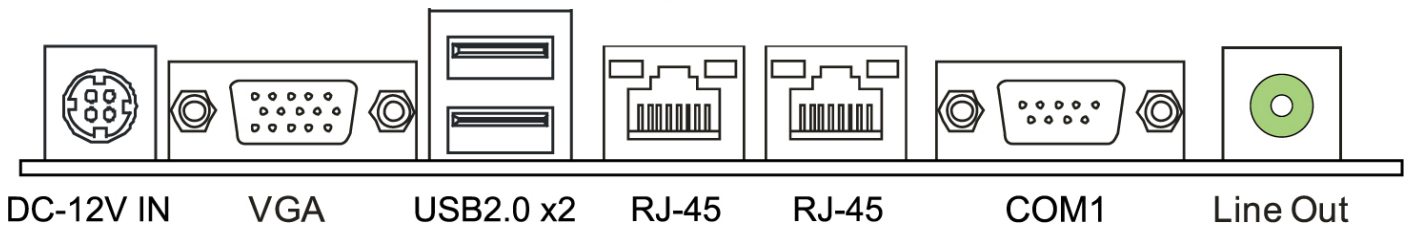
**I/O Port:**

**Rear Panel Connectors**

**Standard**



**Optional**



## Mother Board Specs:

<b>CPU</b>	Intel Celeron J1900 (2.0GHz@10W) 4T/4C 2M L2 cache
<b>Graphic</b>	Intel 3rd Integrated graphics engine supports: Frequency: 688MHs/ Max 853MHs Support independent displays (Extended mode) as below: -- Integrated VGA -- Integrated LVDS Dual channel 18-24Bits Dual Channel by RTD2136R DP to LVDS converter
<b>Super I/O</b>	FINTEK F81866AD Provides the most commonly used legacy Super I/O functionality. 128pin type Environment Control initiatives, H/W Monitor, Fan Speed Controller
<b>Main Memory</b>	2x SO-DIMM (204pin) slot, DDR3L 1333/1066 MHz, Max 8GB Registered DIMM or ECC DIMM is not supported * DIMMB1 slot is optional.
<b>SATA</b>	Chipset built-in Serial ATA controller SATA Version 2.0 specification compliant Data transfer rates up to 3.0 Gb/s
<b>LAN</b>	Realtek RTL 8111G 10 / 100 / 1000 Mb/s auto negotaton, Half / Full duplex capability
<b>Sound Codec</b>	Realtek Codec ALC662 Support 5.1 Channels Built-in AMP ALC105 2.7W for internal speaker
<b>Expansion Slots</b>	1x mini PCIe slot (Height 8mm): Supporting mSATA by BOM change 1x PCIe x 1 (optional)
<b>Back Panel I/O</b>	1x 4pin DC jack 12V/19V/24V input (by BOM change) 1x VGA DB15 (internal VGA header 2*8 pin boxer) 2x 2x USB 2.0 connectors (with 5V continue 1A) 1x RJ-45 (Gigabit LAN) 1x COM 1 (RS-232 RI/5V/12V selecton @ pin #9) 1x Audio Line out connector

<b>On Board Connectors &amp; Headers</b>	<p><b>Display</b> 1x 2*8 pins VGA pin header (share with rear VGA), 1x 2*20 pins, LVDS connector 1x 1*8 pins, Back-light Inverter connector, 1x 2*2 pins, LCD Backlight Brightness adjust header 1x 1*2 pins, LCD Backlight Power ON/OFF header, 1x 1*3 pins, LCD Backlight Inverter Power Select Header (5V/12V), 1x 1*3 pins, LCD Power Select Header (3.3V/5V)</p> <p><b>Speaker</b> 2x 2*2 speaker box header 1x buzzer</p> <p><b>Power</b> 1x 1*3 pins, DC-Fan header 1x 1*3 pins, VGA power header 2 x 1*4 pins, SATA power connector 1 x 2*2 pins +12V/4A or +24V/2A DC-output connector (defined by BOM change)</p> <p><b>I/O</b> 1x 2*5 pins, front panel header (support Power buton / Power LED / HDD LED / Reset buton) 1x 2*5 GPIO header with 3.3V output level 1x 1*6 pins, PS/2 pin header 1x 2*5 pins (2.54pitch) USB2.0 header 1x 2*5 pins (2.54pitch) USB3.0 header 1x 2*6 pins MSR ( with USB / PS2 pin defne) 1x 2*13 pins, parallel header for printer 5x 2*5 pins (2.0pitch), COM2~6 header (lockable wafer) * RS-232 ; pin#9 RING with 5V/12V switch by jumper select</p>
<b>Board Size</b>	170 mm (W) x 170 mm (L), Mini-ITX
<b>Watchdog Timer</b>	Yes (65536 seaments)
<b>Operaton Temperature</b>	0°C ~ 60°C
<b>Storage Temperature</b>	-20°C ~ 80°C
<b>Relative Humidity</b>	10% ~ 90% (non-condensing)
<b>OS Support</b>	Windows* 7, Windows Embedded Standards 7 (WES7), Window 8/ Window 8.1 Biostar reserves the right to add or remove support for any OS with or without notice.