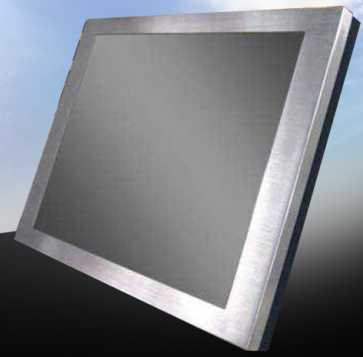


Fanless Front Stainless PANEL PC

19" Panel PC Fanless Front Stainless Panel Bay Trail J1900 Quad Core 2.0 GHz , 2GB, 320G HDD SATA IP65 in front with Resistive Touch,HDD Anti-vibration. (Mounting: VESA/Surface mount Only)



Model: **PNPC1900BT**

FEATURES:



■ IP65 in Front & Side Frame



■ HDD Anti-Vibration Easy-install Kit

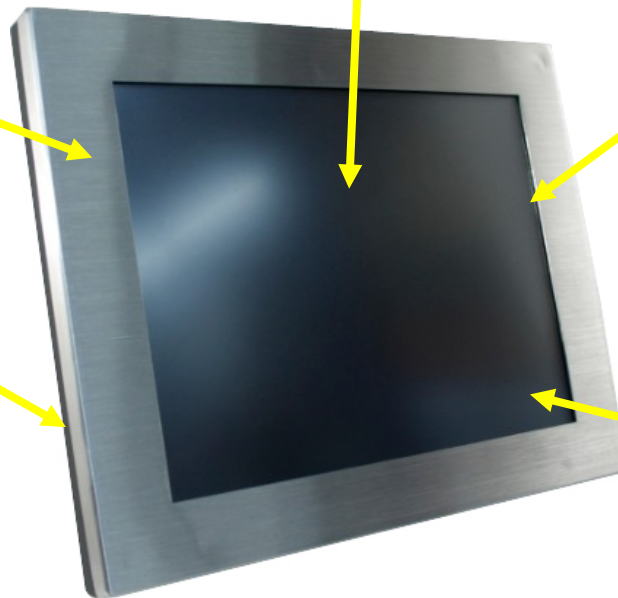


■ Ultra Slim Design (66mm)

True Fanless Panel PC: Fanless, lower power consumption all in on PC with stainless steel Front bezel.

Stainless Steel Front Bezel:
Reduced dirt adhesion for easier cleaning and maintenance

Built in Speakers at the side

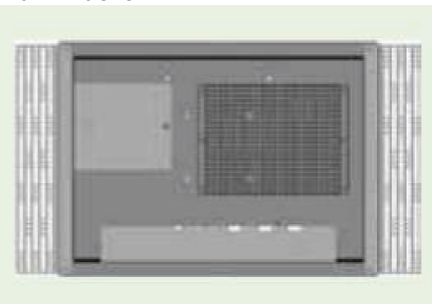


IP65/NEMA4:
Front Water and dust proof. Totally protected against dust, Protected against low pressure jets if water from all directions, limited ingress permitted

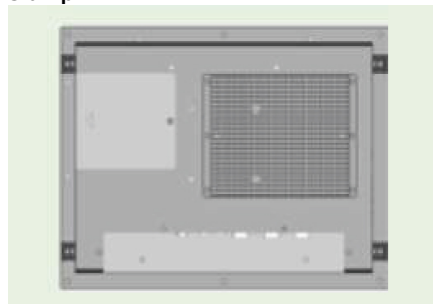
5 Wire Resistive Touch:
long life. Its durability and reliability are the features which make it enable to incorporate in heavy industry machinery, commercial markets and electronic equipment

Wall-Mount

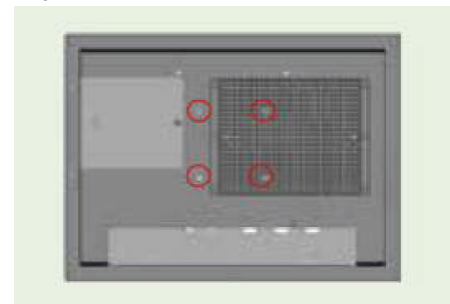
Flank Bracket



Clamp



VESA



i-Tech Company LLC

TOLL FREE: (888) 483-2418 • EMAIL: info@iTechLCD.com • WEB: www.iTechLCD.com

Side Easy Access I/O:

COM3

Side ON/OFF.

LED Light



Easy Install HDD Tray:
One screw away to remove the HDD easy for access and service

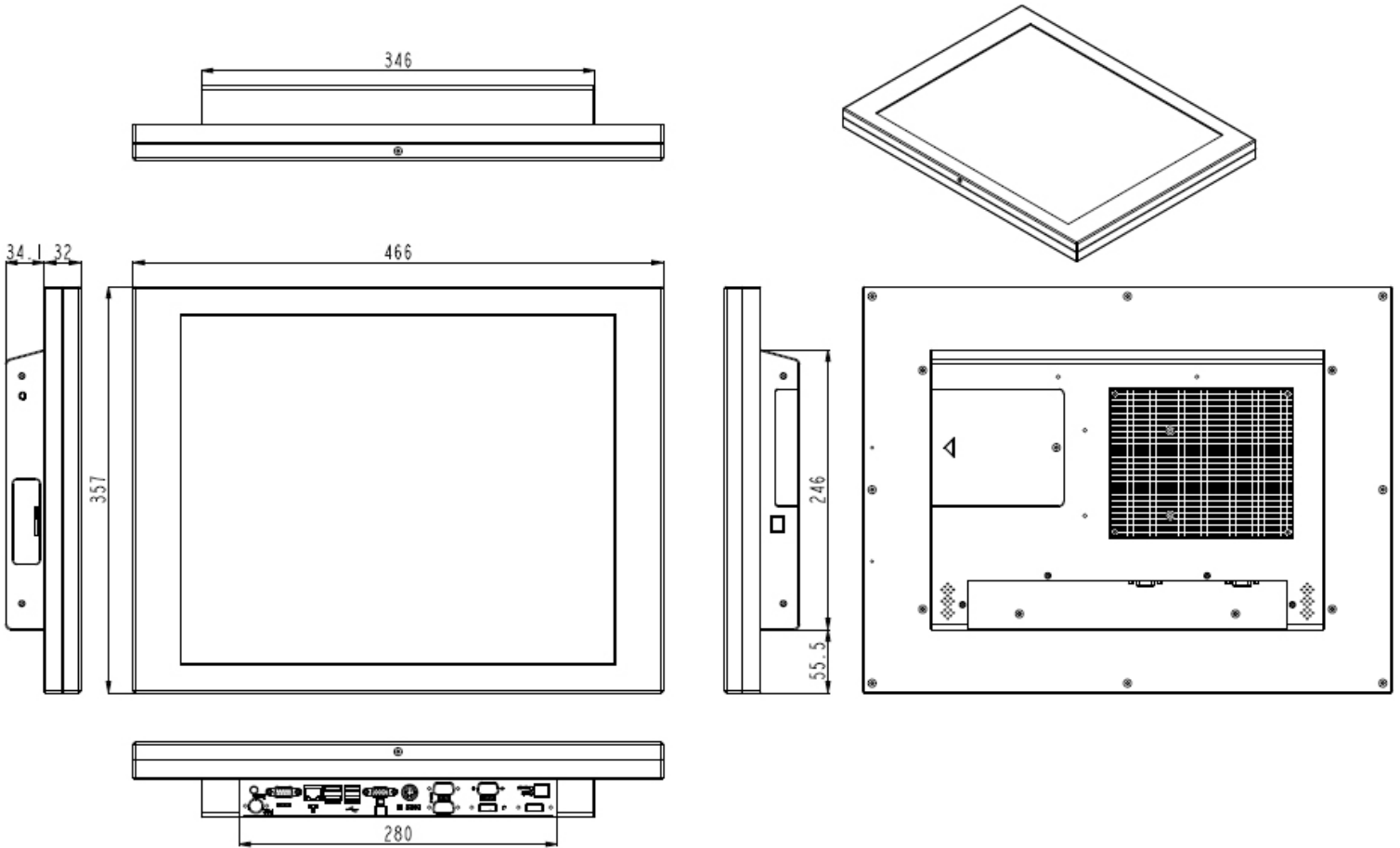
VESA mounting at the back

SPECIFICATIONS:

System	
Motherboard Type	Intel
Form Factor	Bay Trail J1900 (Quad Core 2.0GHz)
CPU	Intel
System Chipset	CPU Integrated
FSB	1066/1333MHz
DIMM Socket	2GxDDR3L (max to 8G)
Graphic	Intel Integrated Graphic HD4000
Audio	Realtek AL662
LAN Controller	Realtek RLT8111G Gigabit LAN
I/O Connector	1LAN/4 USB 2.0/1 USB 3.0/3 RS323/1 VGA/1 PS/2/Audio Line-in/out 2LAN/2 USB 2.0/1 USB 3.0/3 RS323/1 VGA/1 PS/2/Audio Line-in/out
Display	
Size	19"; 1280x1024
Contrast Ratio	1000:1
Brightness	250 cd/m ²
Mechanical	
Touch	Taiwan 5wire Resistive Touch Default
Device	320GB 2.5" SATA HDD Default
Power Supply	ADAPTER 12V/7A 84W (S-JACK-4) (RoHS)
Bezel	Stainless
Dimension	466x66x357 mm (WxDxH)
Operating Temp	0°~40°C (Fanless)
Relative Humidity	10%~90%@50°C,Non Condensing
Vibration	5-17,0.1"Double Amplitude Displacement,17~640Hz
Shock	10-25Hz(X,Y,Z direction 2G,30 minutes)
Features	IP65 in Front & Side Frame



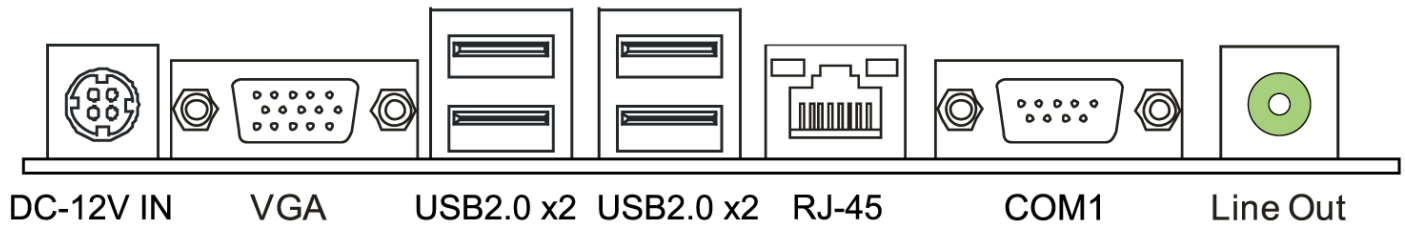
Dimensions:



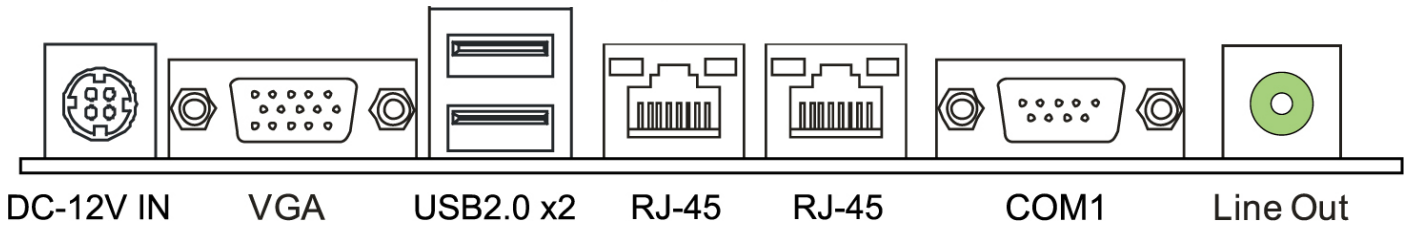
I/O Port:

Rear Panel Connectors

Standard



Optional



Mother Board Specs:

CPU	Intel Celeron J1900 (2.0GHz@10W) 4T/4C 2M L2 cache
Graphic	Intel 3rd Integrated graphics engine supports: Frequency: 688MHs/ Max 853MHs Support independent displays (Extended mode) as below: -- Integrated VGA -- Integrated LVDS Dual channel 18-24Bits Dual Channel by RTD2136R DP to LVDS converter
Super I/O	FINTEK F81866AD Provides the most commonly used legacy Super I/O functionality. 128pin type Environment Control initiatives, H/W Monitor, Fan Speed Controller
Main Memory	2x SO-DIMM (204pin) slot, DDR3L 1333/1066 MHz, Max 8GB Registered DIMM or ECC DIMM is not supported * DIMMB1 slot is optional.
SATA	Chipset built-in Serial ATA controller SATA Version 2.0 specification compliant Data transfer rates up to 3.0 Gb/s
LAN	Realtek RTL 8111G 10 / 100 / 1000 Mb/s auto negotaton, Half / Full duplex capability
Sound Codec	Realtek Codec ALC662 Support 5.1 Channels Built-in AMP ALC105 2.7W for internal speaker
Expansion Slots	1x mini PCIe slot (Height 8mm): Supporting mSATA by BOM change 1x PCIe x 1 (optional)
Back Panel I/O	1x 4pin DC jack 12V/19V/24V input (by BOM change) 1x VGA DB15 (internal VGA header 2*8 pin boxer) 2x 2x USB 2.0 connectors (with 5V continue 1A) 1x RJ-45 (Gigabit LAN) 1x COM 1 (RS-232 RI/5V/12V selecton @ pin #9) 1x Audio Line out connector

On Board Connectors & Headers	<p>Display 1x 2*8 pins VGA pin header (share with rear VGA), 1x 2*20 pins, LVDS connector 1x 1*8 pins, Back-light Inverter connector, 1x 2*2 pins, LCD Backlight Brightness adjust header 1x 1*2 pins, LCD Backlight Power ON/OFF header, 1x 1*3 pins, LCD Backlight Inverter Power Select Header (5V/12V), 1x 1*3 pins, LCD Power Select Header (3.3V/5V)</p> <p>Speaker 2x 2*2 speaker box header 1x buzzer</p> <p>Power 1x 1*3 pins, DC-Fan header 1x 1*3 pins, VGA power header 2 x 1*4 pins, SATA power connector 1 x 2*2 pins +12V/4A or +24V/2A DC-output connector (defined by BOM change)</p> <p>I/O 1x 2*5 pins, front panel header (support Power buton / Power LED / HDD LED / Reset buton) 1x 2*5 GPIO header with 3.3V output level 1x 1*6 pins, PS/2 pin header 1x 2*5 pins (2.54pitch) USB2.0 header 1x 2*5 pins (2.54pitch) USB3.0 header 1x 2*6 pins MSR (with USB / PS2 pin defne) 1x 2*13 pins, parallel header for printer 5x 2*5 pins (2.0pitch), COM2~6 header (lockable wafer) * RS-232 ; pin#9 RING with 5V/12V switch by jumper select</p>
Board Size	170 mm (W) x 170 mm (L), Mini-ITX
Watchdog Timer	Yes (65536 segments)
Operaton Temperature	0°C ~ 60°C
Storage Temperature	-20°C ~ 80°C
Relative Humidity	10% ~ 90% (non-condensing)
OS Support	Windows* 7, Windows Embedded Standards 7 (WES7), Window 8/ Window 8.1 Biostar reserves the right to add or remove support for any OS with or without notice.