

PPC

PPC-7500

10.4" Panel PC with
Pentium® M Solution

Features and Benefits:

- Supports Intel® Pentium® M / Celeron® M CPU up to 1.8 GHz
- Intel® 855GME Chipset
- Low power consumption and economical solution
- Compact size with high performance
- High speed Gigabit LAN
- On-board IDE interface, Type II CompactFlash slot
- High precision touchscreen
- Built-in PC/104-Plus support

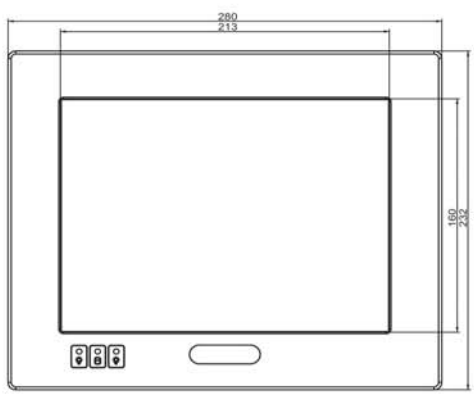


ISO CERTIFIED
9001 14001

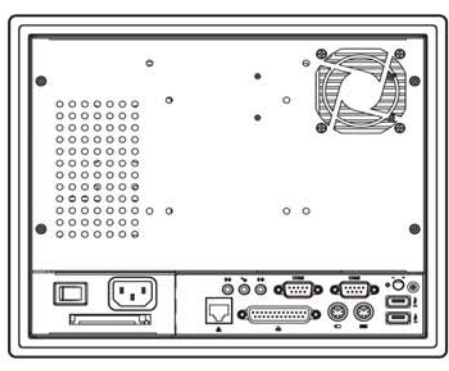
PPC-7500

10.4" Panel PC with Pentium® M Solution

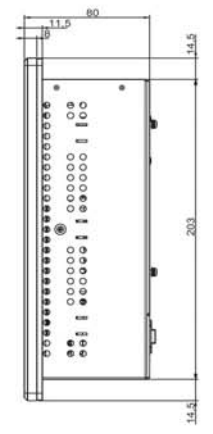
Front View



Rear View



Side View



Unit: mm

Specification

Systems	
CPU Support	Intel® Pentium® M / Celeron® M up to 1.8GHz
Memory Support	1 x 200pin DDR SO-DIMM, Support DDR 333 SDRAM up to 1GB
Front Bazel	Aluminum
IP65 / NEMA4	Yes
Power Supply	AC 110W power supply
O.S. Support	Win 98SE / 2000 / XP / CE.net, Linux Redhat 8.0/9.0
Dimension (W x H x D)	280 x 232 x 80 mm (11.02" x 9.13" x 3.15")
System Weight	6 Kg (13.22lb)
VESA Mounting Support	75mm / 100mm
Certificate	CE / FCC

I/O Ports

USB	2 x USB2.0
KB / Mouse	2
Audio	Line in / Line out / MIC in
Parallel	1 x parallel port (SPP / EPP / ECP)
Serial Port	2 x COMs, COM1 supports +5V or +12V, COM2 for RS232/422/485, supports +5V only

Digital I/O	N/A
LAN	10/100/1000Mbps
VGA	N/A
Brightness Control	VR on rear panel
Drive Bay	1 x 2.5" HDD, 1 x IDE CF slot on board
Expansion Slots	PC104+ / 1 x USB CF slot on back cover

Display	
LCD	10.4" SVGA TFT LCD
Touch Screen	5W Analog resistive (USB interface)

Environment	
Operating Temp.	0° ~ 40°C
Storage Temp.	-20° ~ 60°C
Humidity	20% ~ 90%

Ordering

PPC-7500	Panel PC with 10.4" LCD, S478 Pentium M CPU board, resistive touchscreen , 110W AC power supply
-----------------	---