

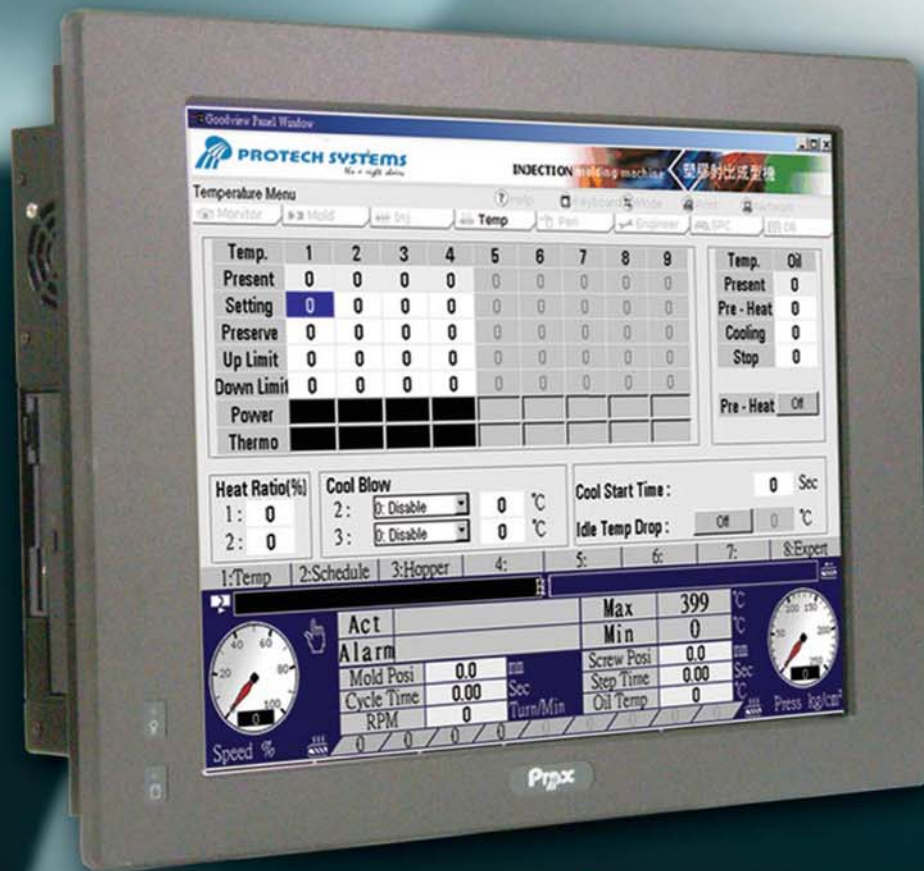
PPPC

PPC-7507F

Fanless and Low Power 17" Panel PC

Features and Benefits:

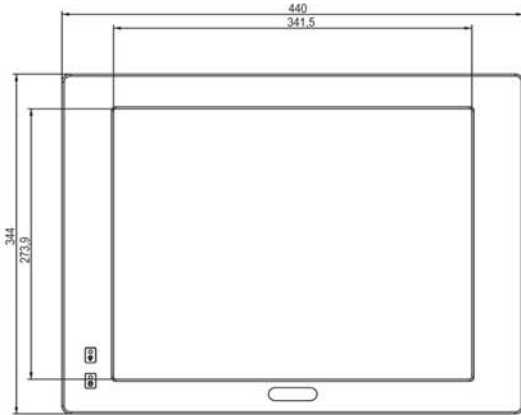
- Intel® Celeron® M ULV CPU on board
- Totally fanless and quiet design
- Low power consumption and economical solution
- On-board IDE interface, Type II Compact Flash slot
- Optional slim CD-ROM drive
- Optional PCI Expansion slot (1 or 3 slots)
- 24V DC power support, optional power adapter for AC power



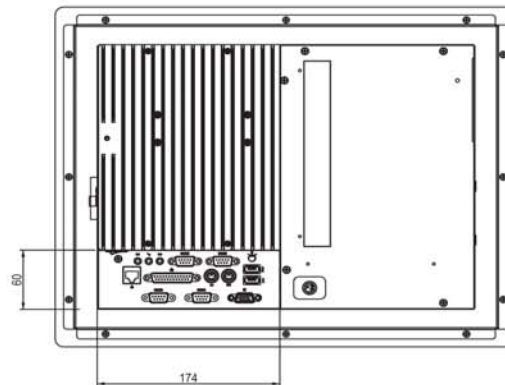
ISO CERTIFIED
9001 14001

PPC-7507F *Fanless and Low Power 17" Panel PC*

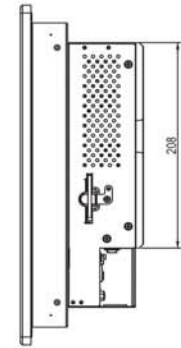
Front View



Rear View



Side View



Unit: mm

Specification

Systems

CPU Support	Intel Celeron M ULV 1.0GHz on board
Memory Support	1 x 200pin DDR SO-DIMM, support DDR 333 SDRAM up to 1GB
Front Bazel	Aluminum
IP65/NEMA4	Yes
Power Supply	DC 24Vin 80W power supply / AC 100-240Vin (optional power adapter)
O.S. Support	Win 98SE/2000/XP/CE.net, Linux Redhat 8.0/9.0
Dimension (WxHxD)	440 x 344 x 107 mm (17.32" x 13.54" x 4.21")
System Weight	8 Kg (17.63lb)
VESA Mounting Support	75mm / 100mm VESA bracket (optional)
Certificate	CE / FCC

I/O Ports

USB	2 x USB2.0
KB / Mouse	2
Audio	Line in / Line out / MIC in
Parallel	1 x parallel port (SPP / EPP / ECP)
Serial Port	4 x COMs, COM1 supports +5V or +12V, COM2 for RS232/422/485, COM 2/3/4 supports +5V
Digital I/O	N/A

LAN	10/100 Mbps
VGA	1
Brightness Control	VR on rear panel
Drive Bay	1 x 2.5" HDD, 1 x IDE CF slot on board, 1 x Slim CD-ROM (optional)
Expansion Slots	1 x PCI or 3 x PCI slot (optional)

Display

LCD	17" SXGA TFT LCD
Touch Screen	7W Analog resistive (USB interface)

Environment

Operating Temp.	0° ~ 40°C
Storage Temp.	-20° ~ 60°C
Humidity	20% ~ 90%

Ordering

PPC-7507F	Fanless Panel PC with 17" LCD, Intel Celeron M ULV 1.0GHz CPU board, resistive touchscreen, 24V 80W DC power supply
EFSP120-ACB	120W, 24 Vdc output power adaptor
PPC-7500-1P	1 x PCI riser card for PPC-7505F/7507F
PPC-7500-3P	3 x PCI riser card for PPC-7505F/7507F