

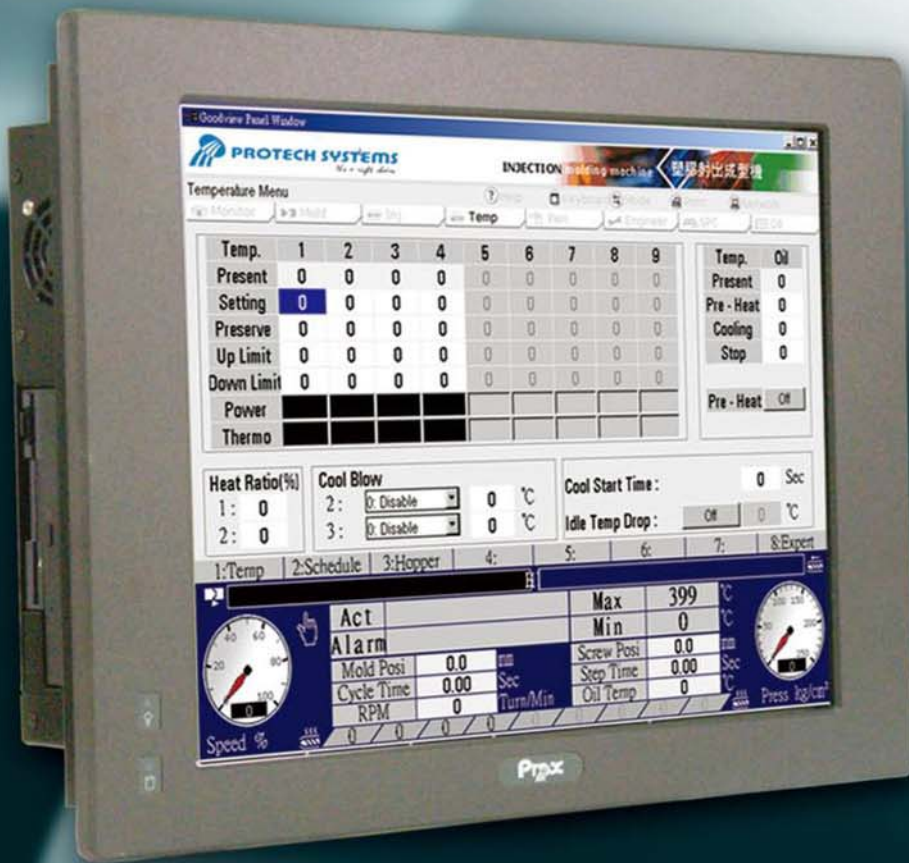
# PPC

## PPC-7525/7527

Low Power Consumption  
15"/ 17" Panel PC

### Features and Benefits:

- Supports Intel® Pentium® M / Celeron® M CPU up to 1.8 GHz
- Intel® 910GML Chipset
- Low power consumption and economical solution
- Compact size with high performance
- High speed Gigabit LAN
- On-board IDE interface, Type II compact Flash slot
- Optional slim CD-ROM drive
- High precision touchscreen
- Optional PCI Expansion slot (1 or 3 slots)

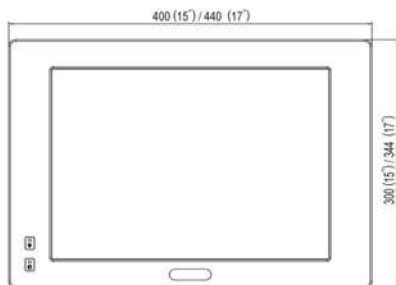


ISO CERTIFIED  
9001 14001

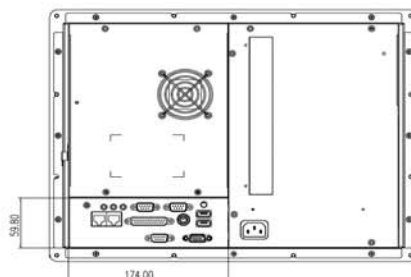
# PPC-7525/7527

Ruggedized and Low Power  
15"/17" Panel PC

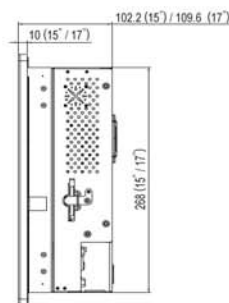
Front View



Rear View



Side View



Unit: mm

## Specification

### Systems

<b>CPU Support</b>	Intel® Pentium® M / Celeron® M up to 1.8 GHz CPU
<b>Chipset</b>	Intel® 910GML E + ICH6M
<b>Memory Support</b>	1 x 200-pin DDR2 SO-DIMM, 512MB DDR2 SO-DIMM (up to 2GB)
<b>Front Bezel</b>	Aluminum
<b>Power Supply</b>	AC 110W power supply
<b>Drive Bay</b>	1 x 2.5" SATA HDD, 1 x IDE CF slot on board, 1 x slim CD-ROM
<b>O.S. Support</b>	Windows XP/XPE/CE.net, Linux Redhat 8.0/9.0
<b>Dimension (WxHxD)</b>	PPC-7525: 400 x 300 x 109.9mm (15.75" x 11.81" x 4.33") PPC-7527: 440 x 344 x 117.3mm (17.32" x 13.54" x 4.60")
<b>System Weight</b>	PPC-7525: 9Kg PPC-7527: 10.5Kg
<b>VESA Mounting Support</b>	75mm / 100mm VESA bracket (optional)
<b>Certificate</b>	CE / FCC

### I/O Ports

<b>USB</b>	2 x USB2.0
<b>KB / Mouse</b>	1 x PS/2 port ( KB/MS for Y-cable)
<b>Audio</b>	1 x Line-in, 1 x Line-out, 1 x Mic-in
<b>Serial Port</b>	3 x COM port (COM 1 & COM 3 for RS-232, COM 2 for RS232/RS422/RS485 selectable, All COM port support +5V/+12V selectable)
<b>Parallel Port</b>	1 x parallel port (SPP/EPP/ECP, share with Digital I/O )

<b>Digital I/O</b>	4 in / 4 out (share with parallel port)
<b>LAN</b>	2 x LAN (1 x 10/100, 1 x 10/100/1000)
<b>VGA</b>	1 x DB-15 VGA Interface
<b>Brightness Control</b>	VR on rear panel
<b>Expansion Slots</b>	1 x PCI or 3 x PCI slot (optionl)

### Display

<b>LCD</b>	15" / 17" TFT LCD
<b>Max. Resolution</b>	1024 x 768 (15") / 1280 x 1024 (17")
<b>Brightness</b>	350 cd/m <sup>2</sup> (15") / 300 cd/m <sup>2</sup> (17")
<b>Touch Screen</b>	7W Analog resistive (USB interface)

### Environment

<b>Operating Temp.</b>	0° ~ 40°C
<b>Storage Temp.</b>	-20° ~ 60°C
<b>Humidity</b>	20% ~ 90%

### Ordering Information

<b>PPC-7525</b>	Panel PC with 15" LCD, S478 Pentium® M CPU board, resistive touchscreen, 110W AC power supply
<b>PPC-7527</b>	Panel PC with 17" LCD, S478 Pentium® M CPU board, resistive touchscreen, 110W AC power supply
<b>PPC-7500-1P</b>	1 x PCI riser card for PPC7525 / 7527
<b>PPC-7500-3P</b>	3 x PCI riser card for PPC7525 / 7527
<b>PPC-VESAKIT</b>	VESA bracket