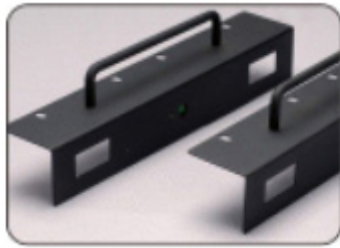




RY1850HD **18.5" Desktop Broadcast Video TFT LCD Monitor**

This series of monitors have been widely used in TV news production, broadcasting house, TV broadcasting truck and other fields. Since this series are working with other adjacent professional equipments, therefore, high stability, high reliability and electromagnetic compatibility are very important conditions to make sure the whole system work smoothly.



Easy operation, time-saving

Consistent design style, the same function and operation mode setting is one of the features of this series of products. Users only need to know one product operation mode , you can operate the full range products, time-saving and convenient.



Stability and reliability

Normally rackmount LCD monitors are exposed in a continuous working state, all components including LCD panels must meet industrial quality standard in order to make sure the monitors run 24 hours / 365 days. The full metal shell not only make the product more solid and durable, but also solve the problem of heat dissipation.



Full metal shell improve the antijamming capability!

Easy to operate, quick and convenient

If the monitor used on desktop, just need fix corresponding metal stands on the monitor for post editing purpose.

Specification:

Screen Size	18.5"
Resolution	1366 (H) ×768 (V)
Dot Pitch	0.300 (H) ×0.300 (V) mm
Aspect Ratio	16:9 / 4:3 Switchable
Brightness	300cd/m ²
Contrast	1000:1
Response Time	5 ms
Viewing Angle	H 170° / V 160°
Voltage Input	DC12V
Voltage Range	DC 6~36V
Power Consumption	≤19.2W
Installation	Desktop or VESA mount
Monitor dimension	L437.27×H310×D44.6mm
Installation dimension	L472×H332.8×D150mm
Weight	6.3kg

Inputs & Functions:

Model Function		RY1850HD	RY1850S	Remark
Video input	Composite	•	•	BNC×1 line
	component video	•	•	BNC×1 line
	SD-SDI	•	•	BNC×1 line
	HD/SD-SDI	•		BNC×1 line
	VGA	•	•	D-SUB15×1 line
	HDMI	•	•	×1 line
Audio Input		•	•	RCA×1 line (stereo)
Audio monitoring		•	•	speaker 2× 2W (8Ω) Earphone : 3.5mm standard interface
SDI embedded Audio		•	•	PPM / UV
Video output	Composite	•	•	BNC×1 line
	component video	•	•	BNC×1 line
	SD-SDI	•	•	BNC×1 line
	HD/SD-SDI	•		BNC×1 line
TALLY		•	•	Red/green two colors
Table bracket+Table connector		•	•	
VESA installing size		•	•	100×100 mm

RY1850HD Functions Table:

Signal Function		SDI1	SDI2	HDMI	COMPOSITE (CVBS)	Component	VGA
Safety mark		•	•	•	•	•	
Scaling	16:9,4:3 Auto	•	•	•	•	•	•
	Built-in scan, Overscan	•	•	•	•	•	
	Pixel to Pixel						
Color temperature D93, D65 Custom setting		•	•	•	•	•	•
Audio metering display		•	•				
Red/Green two colors TALLY display (hardware)		•					
blue only							
black and white display							

Mechanical Drawing:

