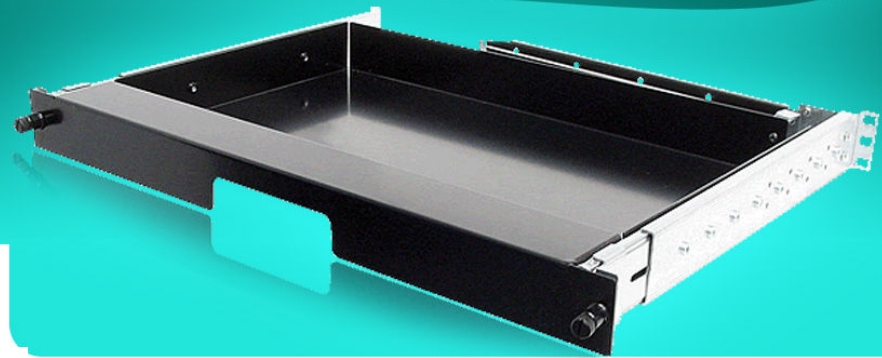


RMKD

Keyboard Drawer

KEYBOARD STORAGE



RMKD-00/1



The RMKD keyboard storage drawer provides a convenient 1U high short depth (14") storage space for compact keyboards. The front panel features a built-in handle and dual retainers to secure the drawer into the rack when not in use. A two inch wide palm rest is provided for comfortable keyboard use. Attached ball-bearing slides lock in the extended position to give a stable platform when in use. A rear mounted carrier keeps keyboard/mouse cables from obstructing in and out movement of the drawer. A choice of rear slide extensions provide rack mounting adjustments of 14" to 31" rail to rail rack depth. Ordering configurations range from an empty drawer to drawer plus Keyboard /mouse combinations.



RMKD-01/1



RMKD-02/1



Specifications:

Dimensions (WxHxD):

- Keyboard Storage Area:

16.5" x 1.7" x 10.0"

- Overall :

19.0" x 1.74" x 14.0"

Weight (Empty Drawer):

8.5 lbs

Model Numbers:

RMKD-XX/X

Rail to rail rack mounting depth:
1 = 14" to 21"
2 = 17" to 25"
3 = 23" to 31"

Installed Keyboard/Mouse Choice:
00 = No Keyboard or Mouse Installed
01 = OEM Sub-compact Keyboard + Optical Mouse
02 = OEM 104 Key KB + Touchpad
03 = OEM 83 Key KB + Touchpad
04 = OEM 83 Key KB + 16mm Trackball
05 = Cherry™ 83 Key KB + 16mm Trackball
06 = Cherry™ 104 Key KB + Touchpad
07 = Cherry™ Compact 104 Key KB + Touchpad