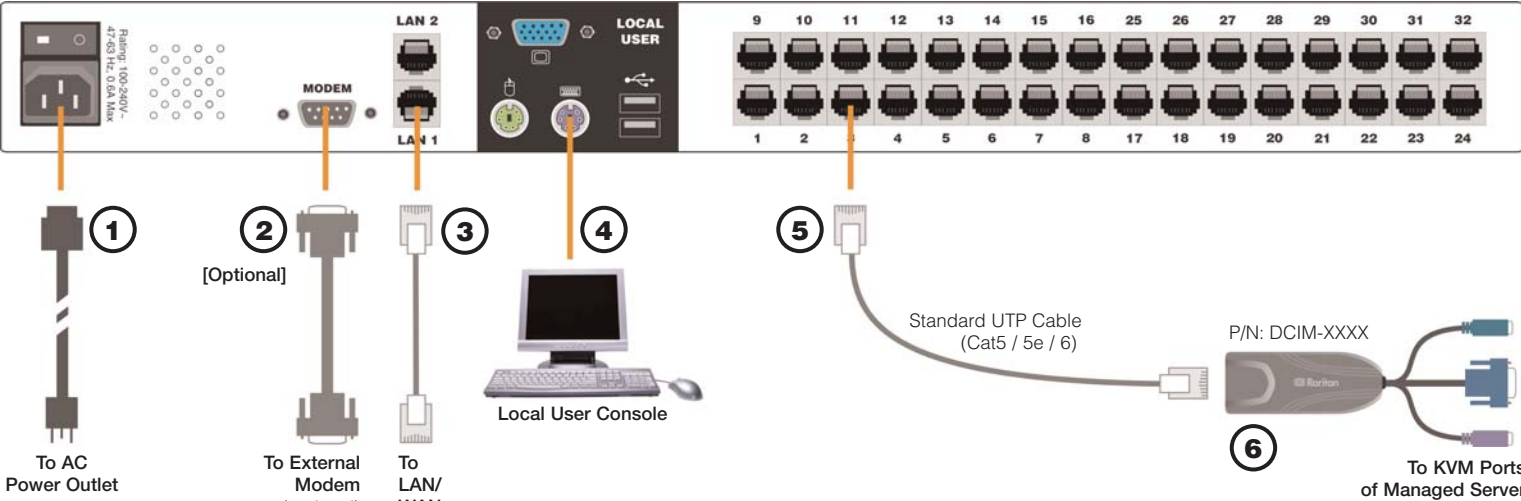




### III. Connect to Network and Attach Servers

In this step, connect Dominion KX to the network and attach the servers that you wish to manage with Dominion KX.



1. Attach the included AC power cord to the Dominion KX unit, and plug into an AC power source.
2. [Optional] Use a straight-through serial cable to connect an external modem.
3. Connect one end of a straight-through Ethernet cable (included) to the port labeled “LAN1” on Dominion KX, and the other end to a network switch or router.
- [Optional] For Ethernet redundancy, use a straight-through Ethernet cable to connect the “LAN2” port to another network switch or router. Should the Ethernet connectivity on LAN1 become

- unavailable, Dominion KX will failover to this port with the same TCP/IP settings — at all other times, this port will be disabled.
4. Attach a keyboard and mouse (either PS/2 or USB), and a multisync monitor to the corresponding ports in the back of Dominion KX marked “Local User.” This Local User Console is used to access servers directly from the rack.
  5. Connect one end of a standard, straight-through UTP cable (Cat5 / 5e / 6) to an unoccupied server port; connect the other end to the RJ45 ports on a Dominion KX Computer Interface Module:

- DCIM-PS2 (PS/2 ports); DCIM-USB (USB ports); DCIM-SUSB (USB ports for Sun servers); or DCIM-SUN (Sun ports with HD15 video).
6. Connect the remaining ports on the Computer Interface Module (CIM) to the corresponding KVM ports of a server that you wish to manage using Dominion KX.
  7. Repeat steps 5 and 6 for to connect all servers that you wish to manage using Dominion KX.
  8. Power ON Dominion KX by moving the rocker AC power switch to the ON position.

### IV. Assign Names to Server Ports

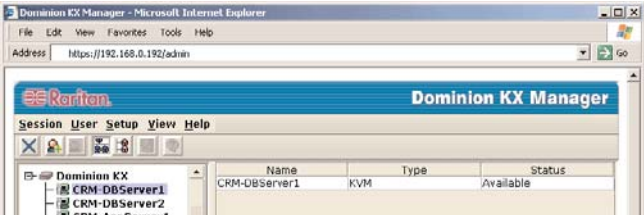
#### USING LOCAL USER CONSOLE

1. On the local user console, log on with the default username/password of **admin / raritan**.
2. Press the [F5] key to activate the Administrative Menu, and select Option 5, “Channel Configuration”.
3. Select a server port to rename, and press [ENTER]. When the cursor changes to a green color, assign a name (up to 20 characters) to identify the server connected to that port. Press [ENTER] to complete.
4. Press [S] to save your changes and press [ESC] to exit the menu.



#### USING WEB BROWSER

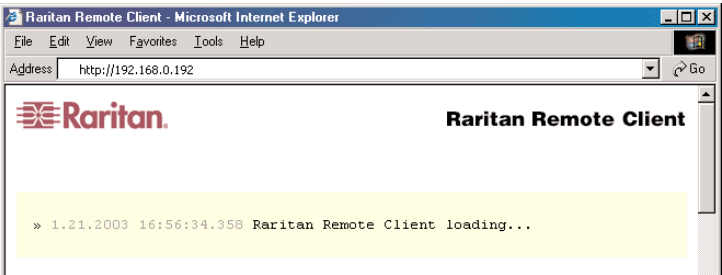
1. On any workstation with network connectivity to your Dominion KX, and with Java Runtime Environment 1.4.x (or later) installed, launch a Web browser and enter the URL, <http://IP-ADDRESS/admin>, where IP-ADDRESS is the IP address that you designated in Step II-7 earlier.
2. The Dominion KX Manager applet will load and launch. Log on with the default username/password of **admin / raritan**.
3. Use Dominion KX Manager to navigate to the server port that you wish to change, and assign a name (up to 20 characters) to identify that server.



### V. Launch Raritan Remote Client (RRC)

Dominion KX provides secure Web-browser access from any Windows-based computer, enabling remote access to your server(s) without the burden of having software on-hand.

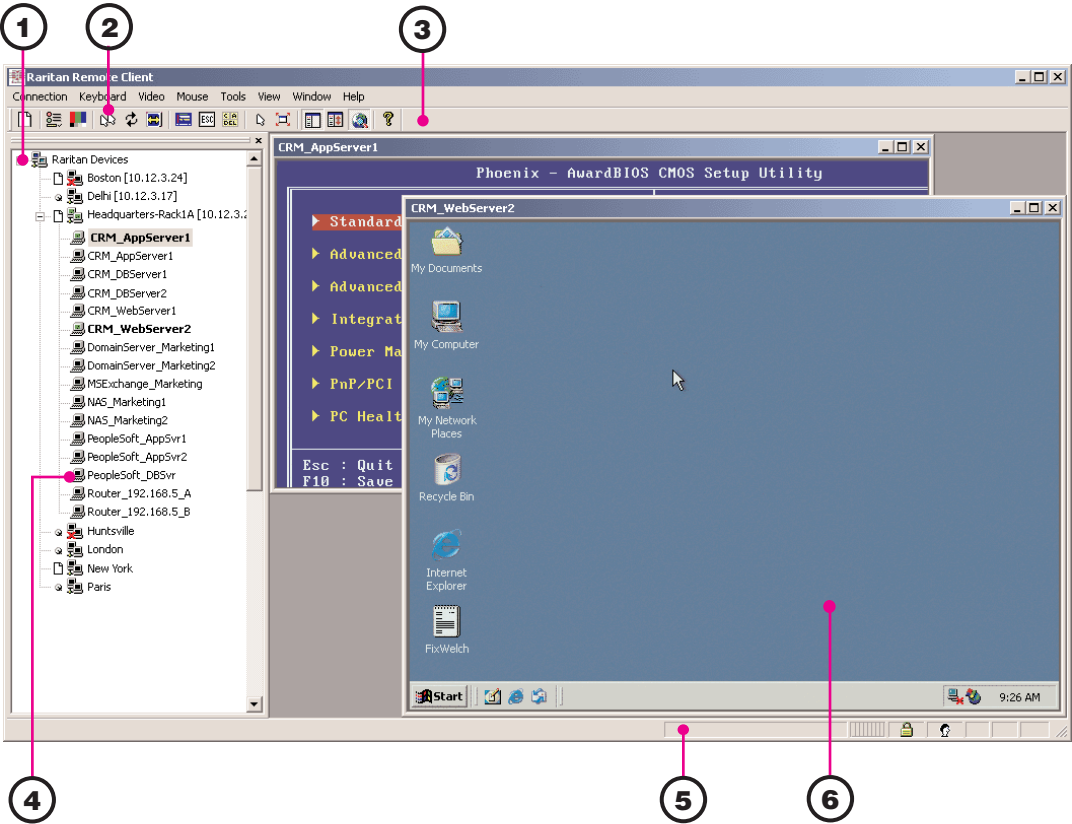
1. Log on to any Windows-based computer with network access to Dominion KX. If you are using Windows NT, 2000, or XP, ensure that you are not a “restricted” user.
2. Launch Internet Explorer, Mozilla, or Netscape. Ensure that your security settings allow the download and execution of ActiveX controls.
- NOTE:** The IE default security setting of “Medium” is sufficient.
3. In the URL text field of your Web browser, enter the IP address you assigned earlier in Step II-7.



4. Raritan Remote Client (RRC), the applet used to access and control servers connected to Dominion KX, will automatically launch and display all Dominion KX units located on the same network subnet. If your Dominion KX unit is not automatically detected, select **Connection > New Profile** in the menu bar to create a new entry.
5. Double-click on the entry corresponding to your Dominion KX, and log on with the default username/password of **admin/raritan**. Double-click on a port to connect to the connected server with full BIOS-level control.

### VI. Remotely Access and Control Connected Servers

Familiarize yourself with the features of Raritan Remote Client (RRC). After logging on to your unit with the default username/password (**admin / raritan**), use the RRC Navigator found on the left-hand side of the RRC window to select and connect to a port.



### VII. Maximize Remote KVM Performance

Dominion KX’s dynamic video compression algorithms maintain usability of KVM consoles under varying bandwidth environments. Dominion KX can optimize its output not just for the corporate LAN, but also for lower-bandwidth WAN and dial-up connections. By adjusting color depth and limiting video output, Dominion KX offers the optimal balance between video quality and system responsiveness in any bandwidth constraint. Familiarize yourself with the following parameters to adjust performance options even further.

#### Video Smoothing

Setting the video smoothing level too high can prohibit Dominion KX from correctly transmitting color gradations.

On the menu bar, select **Connection > Properties** to adjust the Smoothing level to an appropriate setting for your environment.

#### Noise Filter

All video graphics cards generate electrical noise that cannot be seen by the naked eye when displayed on a monitor. Dominion KX reduces the bandwidth it consumes by intelligently ignoring extraneous signal noise.

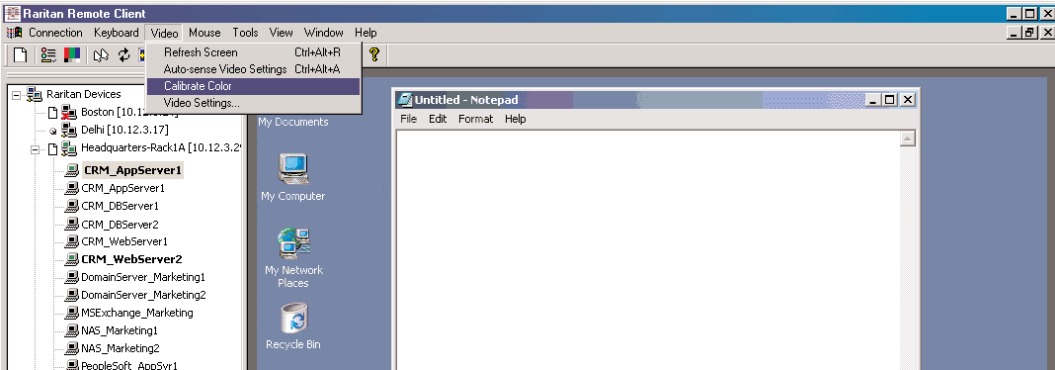
Setting the noise filter too high can prohibit Dominion KX from correctly transmitting screen changes.

On the menu bar, select **Video > Video Settings** to adjust the Noise Filter level to an appropriate setting for your environment.

#### Color Calibration

Some video cards output non-standard signal levels. Perform a color calibration upon initial setup to optimize transmitted color for accuracy:

1. On the remote server desktop that you are controlling with Dominion KX, ensure that a solid white color covers approximately 15% or more of the screen. One simple way to accomplish this is to open the Notepad application and maximize its window size:



2. On the RRC menu bar, select **Video > Calibrate Color** to perform the color calibration.

**If you have any questions during your Dominion KX installation, please consult the User Manual, and feel free to contact your regional Raritan Technical Support center.**