

SNK Series

Model: SNK119CIP32

1U Sun Compatible Keyboard Rackmount Monitor 19" LCD Drawer w 32-ports CAT5 KVM Over IP Switches (Local + Remote IP KVM) USB KVM



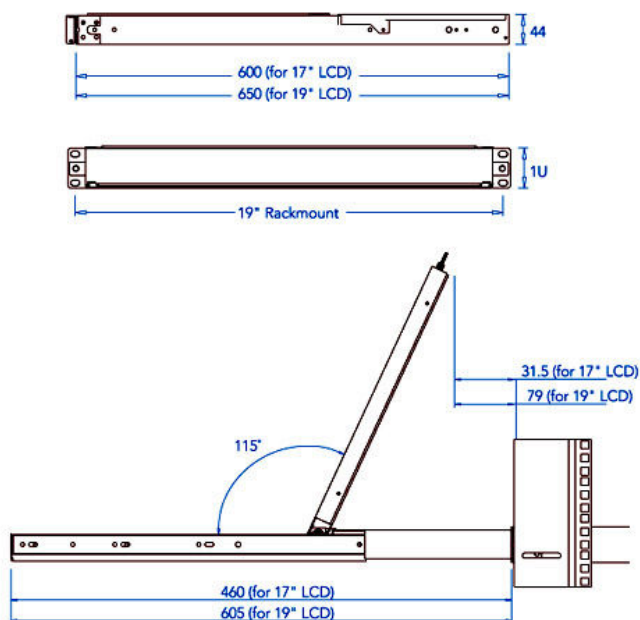
LCD Drawer & KVM Benefits:

- High density Cat5 KVM with either 16 or 32 ports in 1U
- Cost efficient DB-15KVM integration
- Single or "One Man" installation slide for easy, quick installation
- 104 key notepad keyboard with full numerical pad
- Mix PS/2, USB & SUN Multi-Platform switch capability
- Secure remote User access across the world wide web

LCD Features:

- 1U rackmount drawer with either 17" or 19" SAMSUNG LCD
- Either PS/2 or USB input to the LCD Drawer by cable selection
- Multiple keyboard language selections with either touchpad or trackball
- slide rails with fixed positions to prevent drawer movement when typing
- Multi lingual on screen display menu
- 12, 24 and 48 volt DC power options

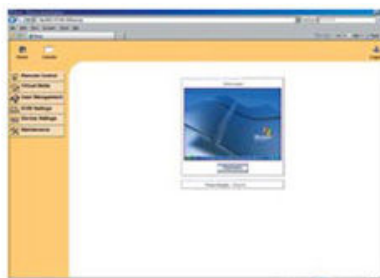
Mechanical Drawing:



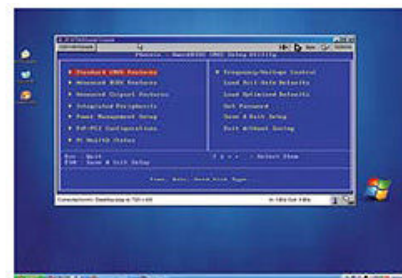
Unit : mm

KVM Features and Benefits:

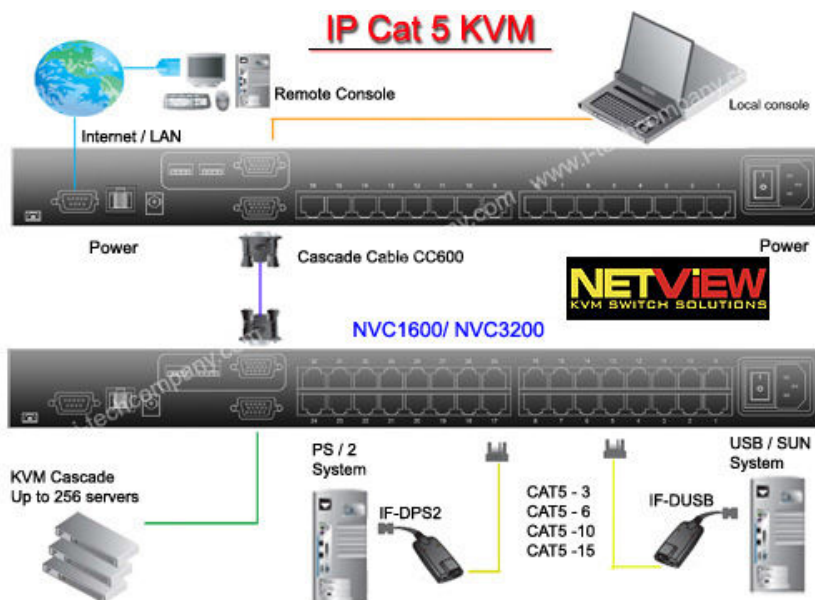
- Use of the RJ45 Cat5 interface allows for a higher number of ports in smaller density
- Greater distances between your switch and servers allow enhanced data centre rack layouts
- Traditional Cat5 cords, when compared to coaxial cables, provide simple cable management
- Mix legacy PS/2 servers with newer USB and SUN solutions
- 128 bit secure browser based user access from anywhere in the world over IP
- Multi lingual on screen display menu
- Advanced user profiles and configurable OSD hot key combinations



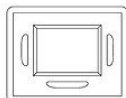
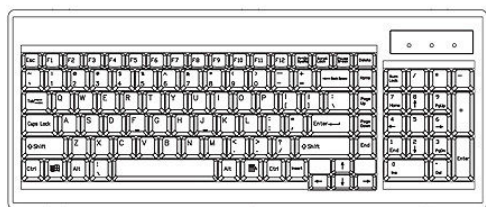
Remote Access Via Browser



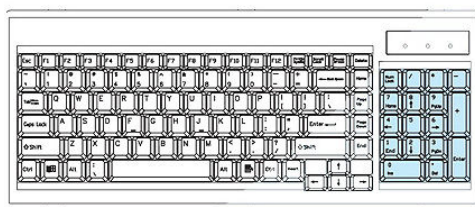
Access IP up to BIOS Level



e keyboard integrated with touchpad



b keyboard integrated with trackball



Specifications:

| | |
|----------------------------|--|
| LCD | |
| Panel | Samsung 19" LCD Panel |
| Screen Type | TFT |
| Display Area | 386.4(H) x 289.8(V) mm |
| Contrast Ratio | 700 : 1 |
| Viewing Angle | 170 ° (H) x 170 ° (V) (Typ.) |
| Resolution | 1280 x 1024 |
| Pixel pitch | 0.242(H) x 0.242(W) mm |
| Response Time | Tr=15ms, Tf=10ms (Typ.) |
| Brightness | 250 cd/m2 |
| Panel Color | 16.7M |
| Back Light | 4 CCFTs (Cold Cathode Fluorescent tube) |
| Video | |
| Horizontal Synchronization | 64 KHz (Max.) |
| Vertical Synchronization | 60 (Max.) |
| Input Signal | Analog RGB 0.7Vp-p |
| Power Management | |
| VESA DPMS | |
| Control | |
| OSD Control | Brightness, Contrast, Colour, Clock, H.Position, V.Position, Phase, Scaling, Auto config, Input select, Multi window, Clear EEPROM, OSD adjust, Save |
| External Connection | |
| Power Input | 12V/5A DC adapter |
| Video Input | 15-pin D-Sub connector |

KVM Technical Specifications:

| | |
|---------------------|--|
| KVM Port | |
| Number of ports : | 16or32 |
| Connector: | RJ-45 |
| Connectivity: | USB type or PS/2 type dongle, up to 40 meter (130 feet) |
| Local Console | |
| Graphic connector: | HDDB15-pin |
| Resolution: | Up to 1600x1200 |
| Input device: | 2 x USB type A for keyboard & mouse |
| IP Remote Console | |
| Connector: | RJ45 ethernet |
| User management: | 15-user login, 1 x active user |
| Network protocol: | DHCP / BOOTP / DNS |
| Security: | SSL v3, RSA, AES, HTTP / HTTPs, CSR |
| Resolution: | 1600x1200 |
| Browser: | IE, Firefox, Safari, Netscape |
| Others: | Serial port, virtual media via USB |
| Expansion : | |
| | Up to 256 servers by 8-level cascade |
| Compatibility | |
| Multi-platform | Mix PCs, SUNs, IBMs, HPs, DELLs Server |
| :Support: | Windows Vista, 2003 / XP / 2000, Linux, Netware, Unix |
| Power | |
| Input: | 100-240VAC, 50 or 60Hz, IEC type cord |
| Option DC : | 12V/24V/48V DC input |
| Consumption : | Max. 25 Watt |
| Regulatory Approval | |
| | FCC,CE |
| Environmental | |
| Operating : | 0 to 50°C |
| Storage: | -10 to 60-C |
| Relative humidity: | 90%, non-condensing |
| Shock: | 50G peak acceleration (11 ms, half-sine wave) |
| Vibration : | 58~100Hz / 0.98G (11 min / cycle) |