

# 21.5-inch Waveform HDSDI & HDMI LCD Monitor



## Features

- Full HD 1920×1080, H178°/V178° viewing angle, 1000:1 Contrast
- HD/SD-SDI, HDMI, CVBS multi formats input and loop output
- HDMI converted to SDI output
- 16-ch SDI embedded audio meter/8-ch HDMI audio meter display
- Waveform/Vector scope/Histogram/Focus assist/Timecode/False color/Blue only/Zebra
- Magnetic LCD protective glass,
- V-mount/Anton Bauer mount plate

Model: SW2100C

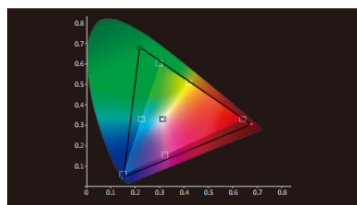


## Introduction

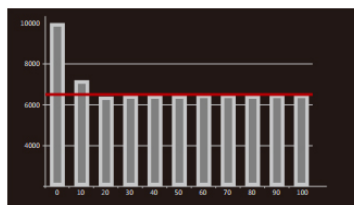
The SW2100C is a 21.5-inch HDSDI/HDMI studio LCD monitor, with a Full HD resolution 1920 ×1080 panel. It integrates a wide range of professional functions including waveform, vector scope, RGB histogram, red/blue switchable peaking, focus assist, false color, blue only, zebra, rotate and flip, 16-ch HDSDI audio meter, time code, and internal color bars. The SW2100C accepts 2 HD/SD-SDI, 1 HDMI and 1 Composite video, and has 2 HD/SD-SDI loop through outputs, 1 HDMI loop through output, and 1 HDMI converted to SDI output. It is powered via a 4-pin XLR 11-17V DC connector or V-mount / Gold-mount battery mounts.

## Color Reproduction

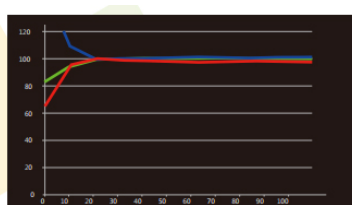
The SW2100C adopts high quality LCD panels and offers accurate color reproduction. The color calibration has been optimized in the new firmware, and users can adjust color temperature by RGB Gain and Bias.



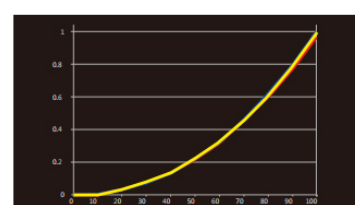
Color Gamut



Color Temperature



RGB Balance



Gamma Luminance



# 21.5-inch Waveform HDSDI & HDMI LCD Monitor

## Specifications

LCD Performance		
Size	21.5 inches	
Resolution	1920×1080	
Display area	477×268 mm	
Aspect ratio	16:9/4:3 adjustable	
Color system	NTSC/PAL	
Brightness	250cd/m2	
Contrast	1000:1	
Color	16.77 million colors	
Viewing angle	H/V:178/178	
Input and Output		
Input	2 BNC	(2) HD/SD-SDI in
	1 BNC	(1) Composite in
	1 HDMI	(1) HDMI in
Output	2 BNC	(2) HD/SD-SDI loop through out
	1 BNC	(1) HDMI converted to SDI output
	1 HDMI	(1) HDMI loop through output
Video Format		
	SMPTE-274M	1080p (60/59.94/50)
		1080p (30 / 29.97 / 25 / 24 / 23.98)
	SMPTE-RP211	1080psf (30 / 29.97 / 25 / 24 / 23.98)
SDI	SMPTE-296M	720p (60 / 59.94 / 50)
	SMPTE-125M	480i (59.94)
	ITU-R BT.656	576i (50)
HDMI		480I / 576I / 480P / 576P
		1080i (60 / 59.94 / 50)
		720p (60 / 59.94 / 50)
		1080p (60 / 59.94 / 50 / 30 / 29.97 / 25 / 24 / 23.98)
Composite	PAL/NTSC	
General		
Working voltage	DC / battery 11V-17V	
Power consumption	<45W	
Working temperature	0°C — +40°C	
Working humidity	10% ~90%	
Storage temperature	-15 C — +60 C	
Storage humidity	10% —90%	
Dimensions	525×381×135 mm	
Net weight	6.87kg	