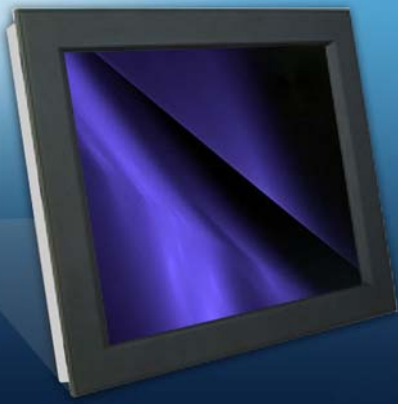


10.4" Front Aluminum LCD Panel

Model: iAP-1000



Display Benefits

- 10.4" LCD with resolution 800 x 600
- Green LED-backlit panel technology
- Rugged construction against external impact
- Protective 3mm glass

Options

- S-Video + BNC & Audio
- 10.4" Touchscreen : Capacitive, Resistive
- 48V, 24V or 12VDC power
- TV - Analog

Standard I/O



AD1.2 upgrade I/O



Specifications:

| LCD Panel | |
|------------------------|---|
| Size (diagonal) : | 10.4" TFT |
| Max resolution : | 800 x 600 |
| Brightness (cd/m2) : | 230 |
| Backlight : | LED |
| Colors : | 262 K |
| Contrast ratio (typ) : | 500 : 1 |
| Viewing angle (H/V) : | 160° x 130° |
| Active area (mm) : | 211 x 158 |
| MTBF (hrs) : | 30,000 |
| Signal input : | VGA |
| Weight | |
| Net / Gross : | 2.5 kgs (5.5 lbs) / 4.5 kgs (9.9 lbs) |
| Mounting : | Panel mount / VESA mount |

| Environmental | |
|---------------------|--|
| Operating : | 0 to 50°C Degree |
| Storage : | -5 to 60°C Degree |
| Relative humidity : | 5-90%, non-condensing |
| Shock : | 10G acceleration (11 ms duration) |
| Vibration : | 5-500Hz 1G RMS random vibration |
| Casing Color : | Black front panel (RAL 9005) Dark grey rear case (RAL 7037) |
| Regulatory : | |
| | FCC, CE |
| Power | |
| Input : | Auto-sensing 100 to 240VAC, 50 / 60Hz |
| Consumption : | Max. 40 Watt, Standby 5 Watt |
| Dimensions | |
| Product : | 285 x 60 x 222 mm / 11.2 x 2.4 x 8.7 inch |
| Packing : | 515 x 117 x 429 mm / 20.3 x 4.6 x 16.9 inch |

Mechanical Drawing

Diagrams (mm)

Front View

Side View

Rear View

