

Network Sensor Manager

Description

Network Sensor Manager (NSM) combined with our award winning Sensor Hub environmental monitoring devices create the most comprehensive physical monitoring solution on the market. The NSM is provided as an optional tool to assist with installations that have multiple Sensor Hubs in one or multiple locations.

The summary view gives users quick access to one screen identifying multiple Sensor Hub devices. This allows easy access during an alarm condition. During an alarm condition the icon changes to either yellow (indicating a warning condition) or red (indicating a critical condition).

Network Sensor Manager gives the administrator the ability to change each Sensor Hub configuration, from security to threshold settings, on one or multiple devices with a click of a mouse. Spend less time wondering when the next problem will occur, instead use the NSM to discover the problem area before it becomes one.

Network Sensor Manager Features

- View multiple Sensor Hubs and what the status is of each unit on one screen
- Summary View allows for the arranging of Sensor Hubs into groups by location
- Administration control over multiple devices allows for mass configurations
- Export raw data to use in other applications such as an external database

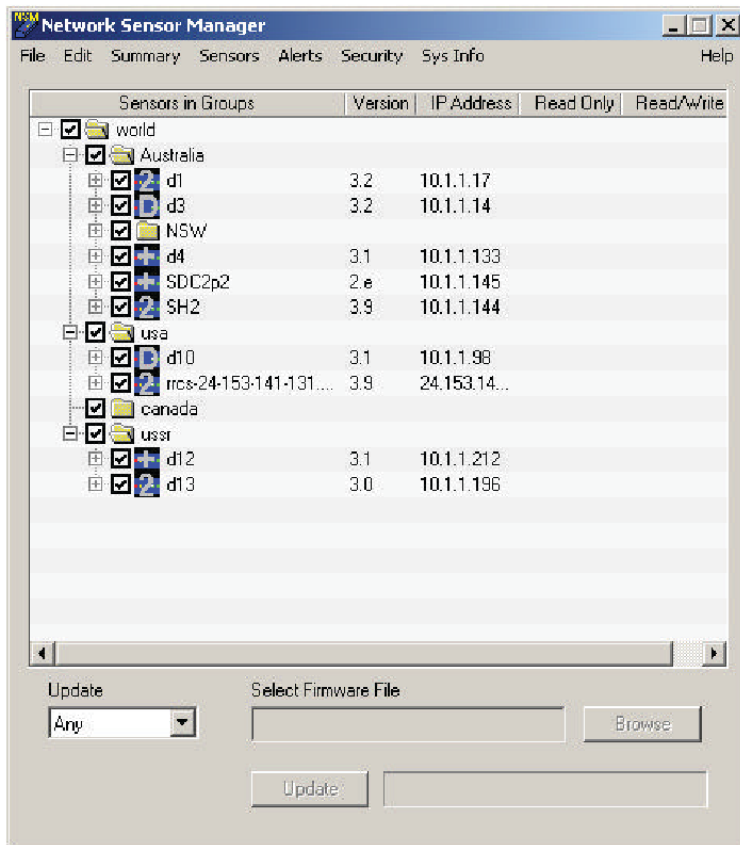
Coming Soon

- Reporting capability helps to find trends and quickly deal with trouble spots
- Graphing tool allows the user to graph multiple devices and sensors on one graph
- Easily access all past alarms by date, alarm type, or device

Network Sensor Manager Benefits

- Easy set-up means less downtime and more time spent responding to issues
- Real-time response of alarms as they happen
- Administrators are more productive by using one tool to control multiple Sensor Hubs.

Summary Window



User Interface

Systems Settings Window

Network Sensor Manager

File Edit Summary Sensors

Application Settings

Sensors in Groups:

- usa
 - d1
 - d3
 - NSW
 - d4
 - SDC2p2
 - SH2
- australia
 - d10
 - nov-24-153
 - canada
 - usr
 - d12
 - d13

Updates: Any

Global SNMP Community Strings:

Read/Write: Read Only:

Threads:

Get/Set: Status/Collection:

Updates (Minutes):

Status Only: Status & Data Collection:

File to load at startup:

Alert program to run on status change:

E-Mail to send on status change:

☐ Send E-Mail From Name: Address:

TO: CC:

☐ Authentication Required User Name: Password:

Server Name/Address: Port:

Data Collection Window

Network Sensor Manager

File Edit Summary Sensors Alerts Security Sys Info Help

Network Sensor Manager Results

Date	Port	Type	Value	Status
Saturday, December 17, 2005 16:20:01	1	Temperature	60	Normal
Saturday, December 17, 2005 16:20:01	2	Humidity	20	Low Warning
Monday, December 19, 2005 09:05:01	1	Temperature	76	Normal
Monday, December 19, 2005 09:05:01	2	Humidity	22	Normal
Monday, December 19, 2005 09:10:01	1	Temperature	76	Normal
Monday, December 19, 2005 09:10:01	2	Humidity	21	Normal
Monday, December 19, 2005 09:15:01	1	Temperature	79	Normal
Monday, December 19, 2005 09:15:01	2	Humidity	21	Normal
Monday, December 19, 2005 09:20:01	1	Temperature	76	Normal
Monday, December 19, 2005 09:20:01	2	Humidity	21	Normal
Monday, December 19, 2005 09:25:01	1	Temperature	76	Normal
Monday, December 19, 2005 09:25:01	2	Humidity	22	Normal
Monday, December 19, 2005 09:30:01	1	Temperature	77	Normal
Monday, December 19, 2005 09:30:01	2	Humidity	22	Normal
Monday, December 19, 2005 09:35:01	1	Temperature	77	Normal
Monday, December 19, 2005 09:35:01	2	Humidity	21	Normal
Monday, December 19, 2005 09:40:01	1	Temperature	77	Normal
Monday, December 19, 2005 09:40:01	2	Humidity	21	Normal
Monday, December 19, 2005 09:45:01	1	Temperature	76	Normal
Monday, December 19, 2005 09:45:01	2	Humidity	20	Normal
Monday, December 19, 2005 09:50:01	1	Temperature	77	Normal