



W6230-AV 6U 600mm Depth Rackmount Server Cabinet



FEATURES:

- Rugged Shockmount Style
- Patent Design on Industrial Spring under Cabinet Post Cage
- Portable Handle
- Front & Back Lockable Door
- Anti-Vibration Design
- Universal Fit Most of Rackmount Chassis and Equipment
- Optional Front and Rear Cover



The W6230-AV shockmount cabinet is built with high-quality aluminum/steel structures and anti-vibration patent design. With handle design, W6230-AV provides your critical rackmount equipment the ultimate mobility. Optional front and rear covers are able to prevent your critical systems from collision damage. This stylish and secured 19" cabinet is optimized for small business, research institutions, and professional studio.

SPECIFICATIONS:

Color	Black (Special Color on Request)
Material	SPCC T:1.6mm

ACCESSORIES:

10 Outlet Overload Circuit Breaker Protection Power Distribution Unit
14 Outlet Lightning Surge Protection Power Distribution Unit
6 Outlet Power Strip



Optional Front and Rear Cover

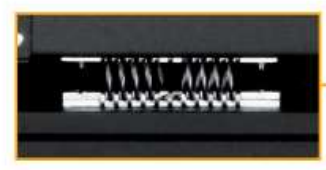
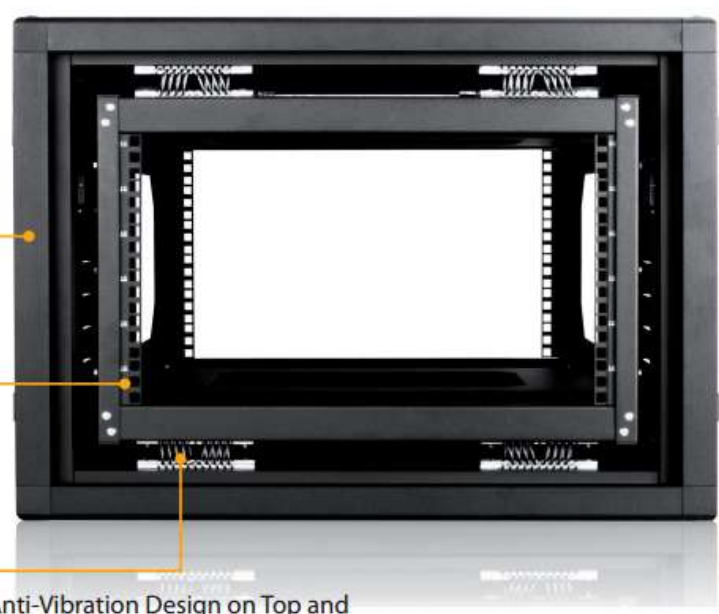


Spring Loaded Recessed Handle Design

Vented Holes on Side for Air Flow While Covers are Closed

High-Quality Rugged Structure Installed

U Lableing for Convenience



Anti-Vibration Design on Top and Bottom of the Cage

Model No.	Form Factor	Dimension (inches)			Assembly Required?	Loading Capacity (lbs)	Door	Removable Side panels	Security	Casters	Page No.
		W	H	D							
W6230-AV	6U	27.56	19.69	23.62	No	176	Optional	No	No	Optional	55

MECHANICAL DRAWING:

