

# AtoD BOARD

Model: DA005



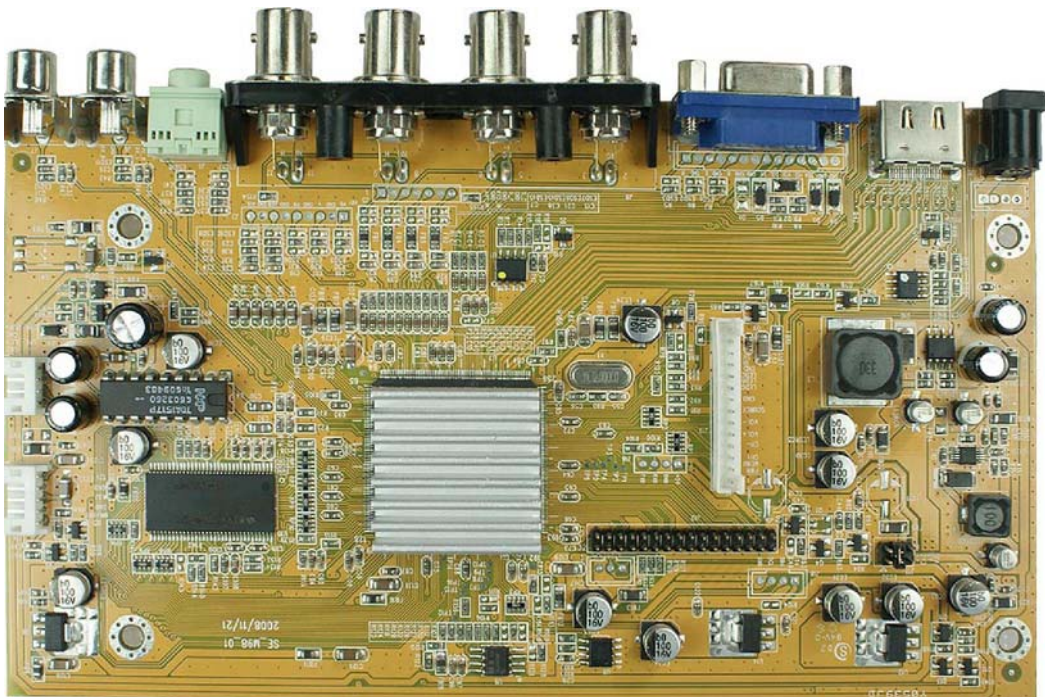
i-Tech Company LLC  
TOLL FREE: (888) 483-2418 • EMAIL: [info@itechlcd.com](mailto:info@itechlcd.com) • WEB: [www.iTechLCD.com](http://www.iTechLCD.com)

[www.itechlcd.com](http://www.itechlcd.com)

# 1.Functions

- Support 3D De-interlace / 3D Comb filter / 3D De-nosie
- CVBS-in(BNC) x 2
- CVBS-looping(BNC) x 2
- 1080P Resolution (HDMI) x 1
- PC VGA x1
- AUDIO Input: R, L
- PC AUDIO in
- YPbPr x 1 (Option)
- RS232 (Option)

## 2.Dimension: 180mm(L) X 105mm(W) X 20mm(H)



# 3. Power Consumption

Panel: AU 19" EG01

Inverter: 4 Lamp

Resolution: 1280 X 1024 75Hz

Condition	Audio minimum	Audio maximum
A/D Board + Panel + Inverter	15W	20W
Power saving	0.12W	

## 4. Connector pin Description

### Key Connector (J17)

PIN	SYMBOL	PIN	SYMBOL
1	POWER	8	GND
2	MENU	9	LED_GRN
3	UP	10	LEDRED
4	Down	11	-
5	Right	12	GND
6	Left	13	IR
7	SOURCE	14	5V

### Speaker (J15)

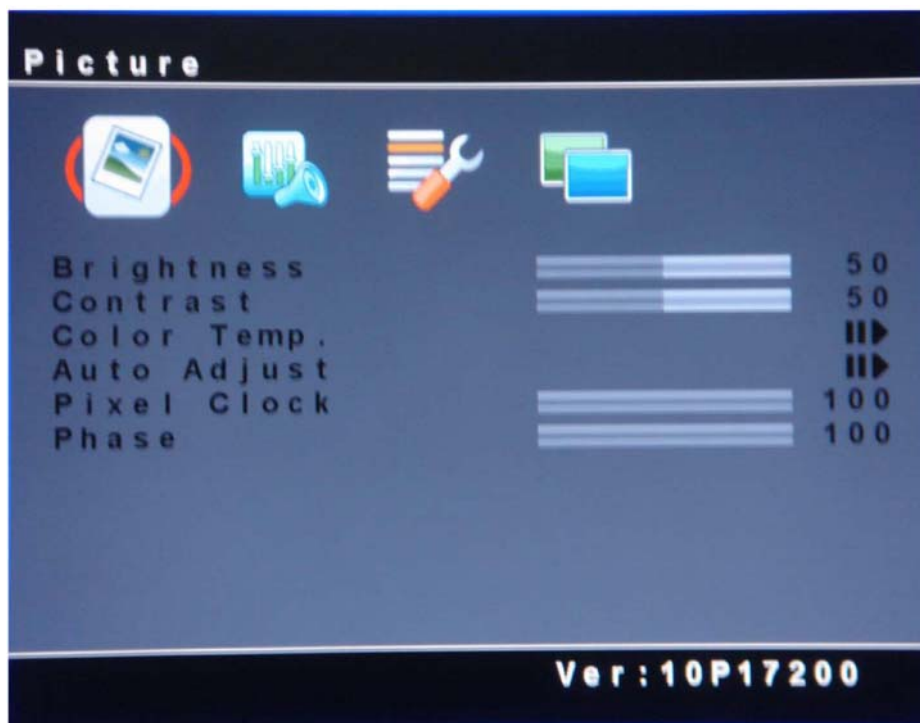
PIN	SYMBOL	PIN	SYMBOL
1	SPKR	3	SPKL
2	GND	4	GND

### LVDS PIN (J3)

PIN	SYMBOL	PIN	SYMBOL
1	VCC	17	RXEIN0-
2	VCC	18	RXEIN0+
3	RXOIN0-	19	RXEIN1-
4	RXOIN0+	20	RXEIN1+
5	RXOIN1-	21	RXEIN2-
6	RXOIN1+	22	RXEIN2+
7	RXOIN2-	23	GND
8	RXOIN2+	24	GND
9	GND	25	RXECKIN-
10	GND	26	RXECKIN+
11	RXOCKIN-	27	RXEIN3-
12	RXOCKLN+	28	RXEIN3+
13	RXOIN3-	29	GND
14	RXOIN3+	30	GND
15	GND	31	NC
16	GND	32	NC

# 5. Menu Operation

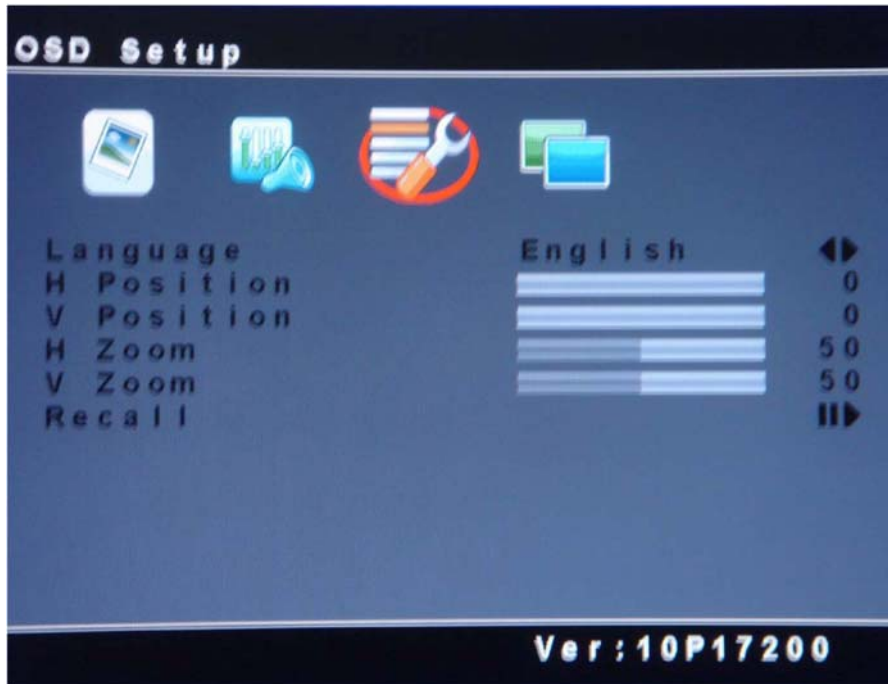
## Screen Setting



## Volume Setting



## OSD Function Setting



## PIP Setting







### PIP Source Select



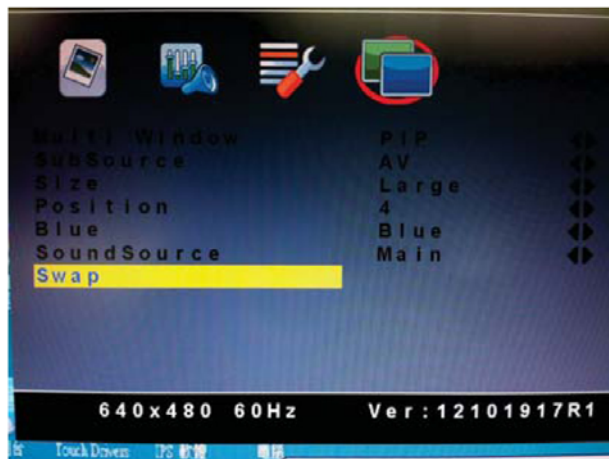
### PIP Screen Size



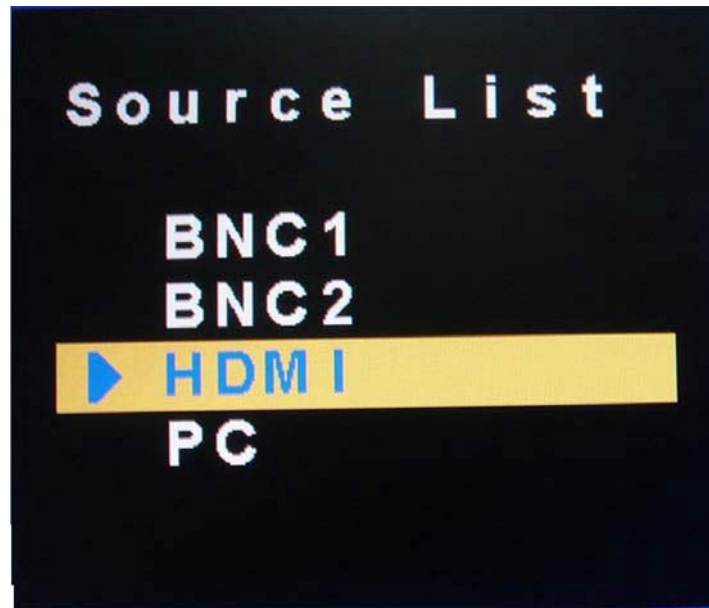
### PIP Position



### PIP Swap



## Source Select



## 6. Burn in mode

Press MENU + Power Key

