

DAC001-Composite via RCA

PC & Video interface for TFT panels

DAC001 interface controller for OEM monitor and packaged flat panel display solutions.

Panel's : 1920x1200 , 1600x1200 , 1280x1024 , 1024x768 , 800x600 , 640x480

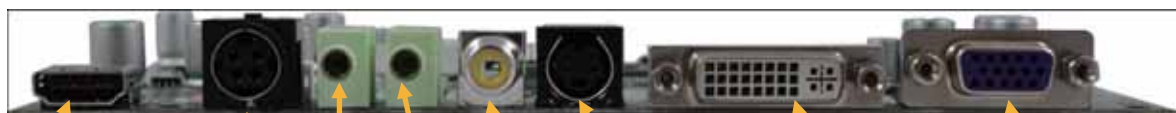
TFT color LCD & other

Input : Analog VGA , Video(PAL,NTSC) , Component , DVI-D , Audio

The DAC001 is a dual channel graphics and video processing A/D board for Liquid Crystal Display (LCD) monitors incorporating Picture in Picture, up to WUXGA output resolutions. The G2A221 provides all key A/D board functions required for image capture, processing and display timing control. Functions include a high-speed triple-ADC and PLL, DVI receiver, high quality zoom and shrink scaling engines, Motion Adaptive De-Interlacing (MADI), Low Angle Diagonal Interpolation (LADI), an exquisite on-screen display (OSD), a 100MHz on-chip X186 micro-controller, and a dual channel LVDS transmitter for interface to displays. With all these functions integrated onto a single board, the G2A221 reduces the cost of high-end multimedia LCD monitors while maintaining a high degree of flexibility and quality.

Input Resolution

POWER	WUXGA
Audio	UXGA
Composite Video	SXGA
S-Video	WXGA
Component	XGA
DVI	SVGA
D-Sub	WVGA
	VGA



HDMI Connector

Power Connector

AV Audio IN

PC Audio IN

Video Input

S-Video Input

DVI Connector

D-SUB Connector

DAC001-Composite via RCA

PC & Video interface for TFT panels

Panel Compatibility Guide

Manufacture	Panel type
AU	TFT
CHI MEI	TFT
CPT	TFT
Fujitsu	TFT
Hitachi	TFT
Hydis	TFT
LG	TFT
Mitsubishi	TFT
NEC	TFT
Prime View	TFT
Samsung	TFT
Sharp	TFT
Toshiba	TFT
Torisan	TFT

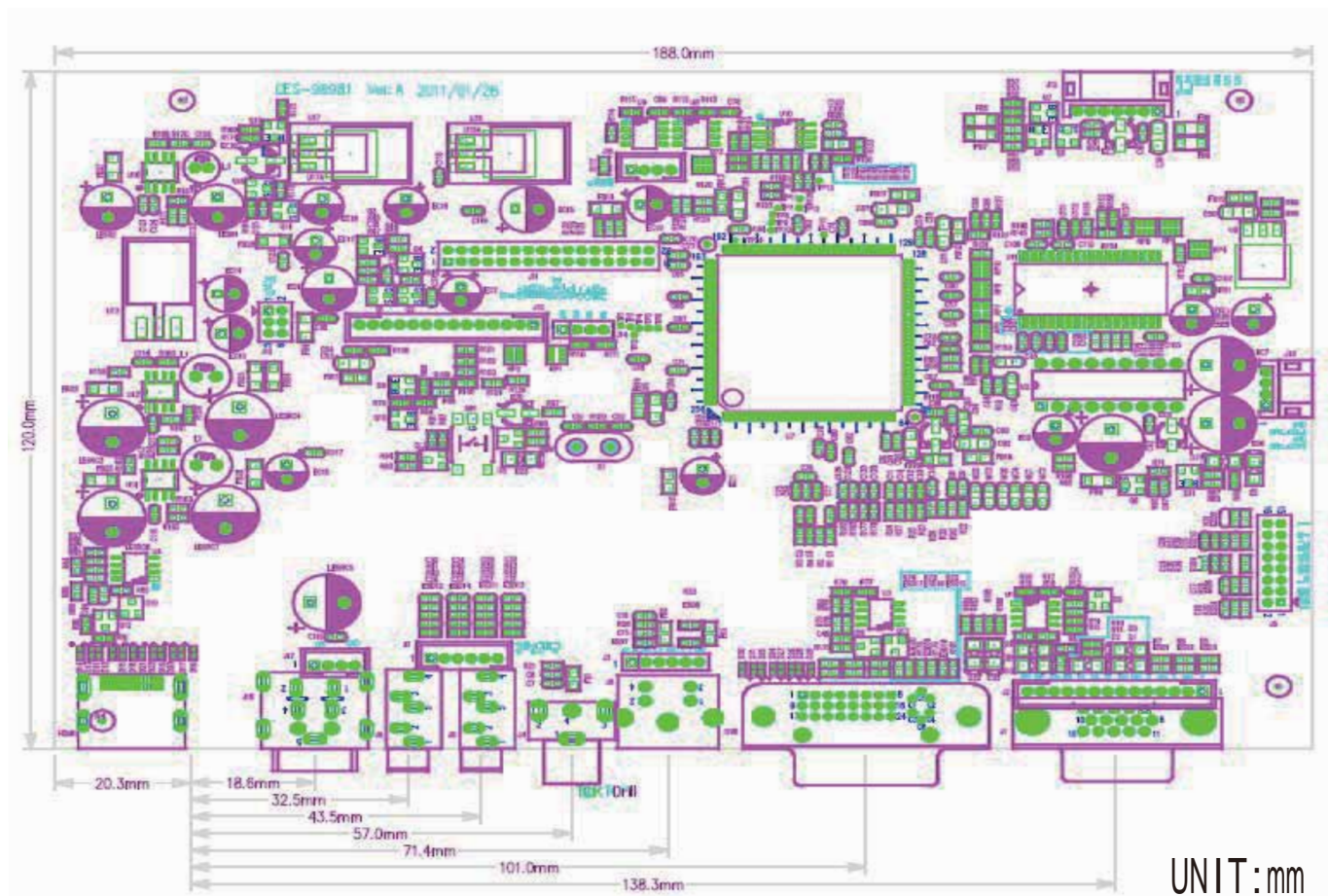
Support for the above panels (and more as they become available) is being introduced progressively. Please check at time for placing order for specific compatibility.

Order Information

The DAC001 is design for Full HD TFT flat panel interface board, the DAC001 has below features :

- ◆ V GA x 1
- ◆ D VI x 1
- ◆ H DMI x 1
- ◆ S -Video x 1
- ◆ V ideo x 1
- ◆ R S-232 and remote control OSD
- ◆ A udio I/F

A/D Board Drawing



* Note: this is a simplified drawing and some components are not marked in detail. Please contact our sales representative if you need further product information.



i-Tech Company LLC

TOLL FREE: (888) 483-2418 EMAIL: info@itechlcd.com WEB: www.iTechLCD.com