



Model: WPM-MAR8400T1

8.4" Rugged Transflective SunLight Readable Marine LCD

| | | | | | | | | |
|-------------------|----------------------|-----|------------|----------------------|--------------------------------|-------------------|--------------------------------|-----------------|
| Dimming 0~100% | Sunlight Readable | PIP | IP65 Proof | 8- to36V DC input | Anti- Corrosion (Option) | OSD from panel | AR Safety Glass (option) | Touch Screen |
|-------------------|----------------------|-----|------------|----------------------|--------------------------------|-------------------|--------------------------------|-----------------|

Features:

| | |
|-------------------------------------|--|
| Hyper Dimming: | Dimming knob control backlight brightness from nearly 0% to 100% |
| Sunlight Readable: | Transflective film technology enhance visibility |
| Ruggedized IP65 Proof: | Panel (flush) mount IP65 aluminum housing with powder coating design (IP54 rear) |
| Wide Voltage Range Input : | 8 to 36V DC to DC power input acceptable |
| Touchscreen : | High quality touchscreen / AR protection glass for option |
| IP65 OSD front panel Design: | Ease of use front panel OSD control |
| Anti-shock and Vibration: | Enhanced shock and vibration resistance |

TFT Characteristics

| | |
|---------------------|--------------------------|
| Pixel Number | 800 x 600 |
| Pixel Pitch(R&B) | 0.213 (H) x 0.213 (V) mm |
| Contrast Ratio | 250 : 1(typ.) |
| Light Intensity | 520 (typ.) |
| Viewable Angle | 100 (H); 90 (V) |
| Active Display Area | 170.4 (H) x 127.8 (V) |
| Max Colors | 262,144 (6bits/color) |

Input Signals

| | |
|-------------------------|-----------------------------|
| RGB Signal | D-SUB 15P connector(female) |
| Composite Video | RCA phono plug |
| S-Video Signal | S-Video (SVHS) plug |
| DVI-D Signal | DVI-D input 24pin connector |
| DC Power Signal | Screw terminal block |
| Touch Screen (Optional) | D-SUB 9P connector (female) |

User Controls

- Power On/Off via front button
- VR Brightness Knob Control
- On Screen Display control(OSD)
- OSD Remote Control via RS-232
- Power Mode Status LED

Power Specification

| | |
|----------------------|---|
| Power Supply Options | 8 to 36 V DC to DC power supply with terminal block |
| Power Consumption | 15 W typical, normal operation |

Environmental Considerations

| | |
|-----------------------|--|
| Operating Temperature | -10 to 55 deg.C (-20 to 60 deg.C for optional heating) |
| Humidity | 5% to 95% (non condensing) |
| Anti-Vibration | 5Hz~500Hz / 1Grms/3 Axis |
| Anti-Shock | 15G, 11ms duration |

Available Options

| | |
|------------------------|--------------------------------------|
| Mechanical Options | IP65, Panel Mount, Open Frame |
| Touch Screen Options | 5 Wire Resistive |
| AR Safety Glass Option | 5mm Anti-reflective protection glass |

Certification and Approvals

| | |
|-------------------------|---|
| Certification Approvals | Certification DNV Type Approval (Pending) |
|-------------------------|---|

Input / Output Connectors

| | |
|----------------------|--|
| Ethernet LAN | 1 x RJ45-10/100 Mbps |
| Keyboard / Mouse | 1 x PS/2 |
| COM | 2 x RS232, 1 x RS232/422/485* |
| USB | 2 x USB Type-A receptable |
| RGB Out | 1 x VGA 15P DSUB (female) |
| Compact Flash Socket | 1 x Type I/II CF Socket (Not support Pull and Plug.) |
| Power Input | 1 x DC Terminal block |

Outdoor Readability

| | | | |
|-----------------------|--|--------|--------|
| Ambient light(nit) | 10,000 | 30,000 | 80,000 |
| Brightness gain (nit) | 432.7 | 620 | 1,180 |
| Reflectance(net)(%) | 1.20% | 1.15% | 1.16% |
| Note | *Equivalent brightness under sunlight. | | |

*Due to Panel material's deviation, different panel supplier will set different specific variance range to optical characteristics. The factors of time used, Lamp current, Ambient temperature will influence the optical measurements

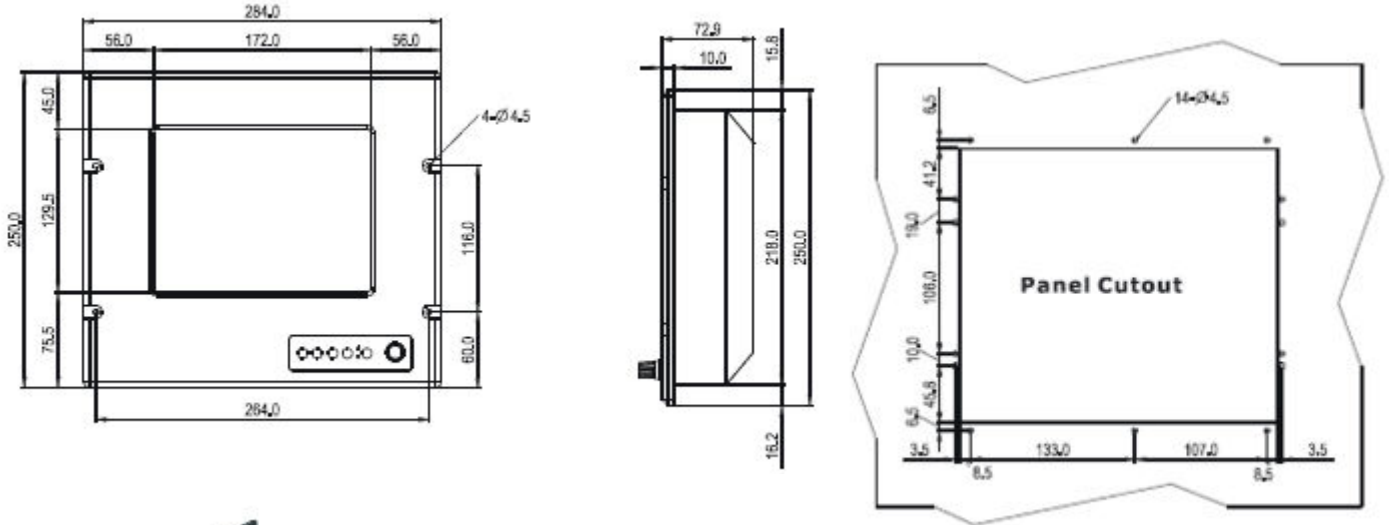
*If you use SBC on-board RS485, you need to set appropriate state of RTS line before sending/receiving data in your software program. We offer additional board that can perform auto-direction hardware function.





Model: WPM-MAR8400T1

8.4" Rugged Transflective SunLight Readable Marine LCD



All Dimensions are ± 0.5 mm

