

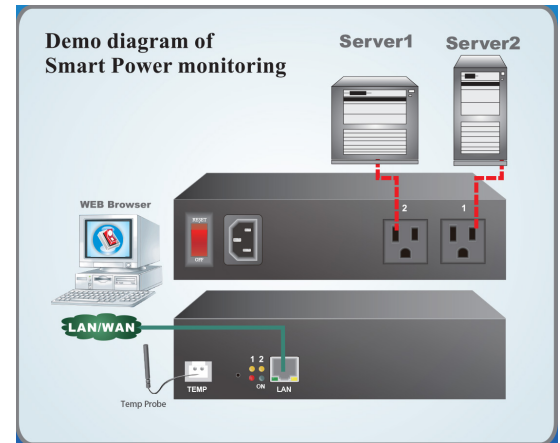
REMOTE POWER MANAGEMENT

Smart Remote Power Monitoring 12 Amp, Two Outlets (IEC320 C13) (NEMA5-15R), Power input 85~264VAC 47~63Hz, Consumption Efficiency 4.5 W Support: SNMP V1/V2c/V3, SNMP Trap, SSL, HTTP.

Model: BMS220

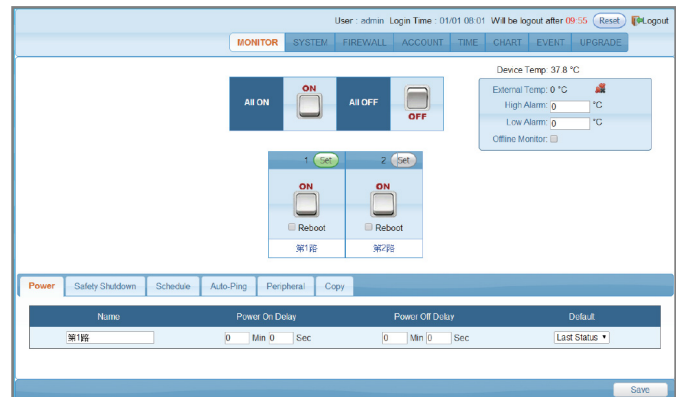


- Control Power Switch of Remote Equipment via network to replace the presence of the personnel.
- By brief message and email warning to practice the instant surveillance and warning to important equipment.
- Support Power Start sequence setting to prevent all of switches from starting simultaneously to cause sudden overloading and effect equipment working.
- Provide 2 sets of accounts and passwords for your own setting to manage different power switches.
- Record user operating and abnormal message to provide user of checking the evens afterwards.
- Provide remote net firmware to renew the function.
- It is equipped with overloading electric breaking protector to avoid overloading to cause device damage.
- Pre-set Switch Power on Delay and arrange the working schedule for power supply.
- IP and MAC filtering to restrict the operation computer of devices.
- SNMP (V1/ V2/ V3) and SNMP Trap support.
- Support Web API (JSON format control) and SNMP control. Administrator can develop his own control softwares.
- Supports Https to encrypted data during transmission and authenticated by digital certificate.
- Supports Email encryptions, eg. gmail and hotmail.
- Supports built-in temp detect and able to add extenal temp probe.
- Supports Real Time Clock (RTC).



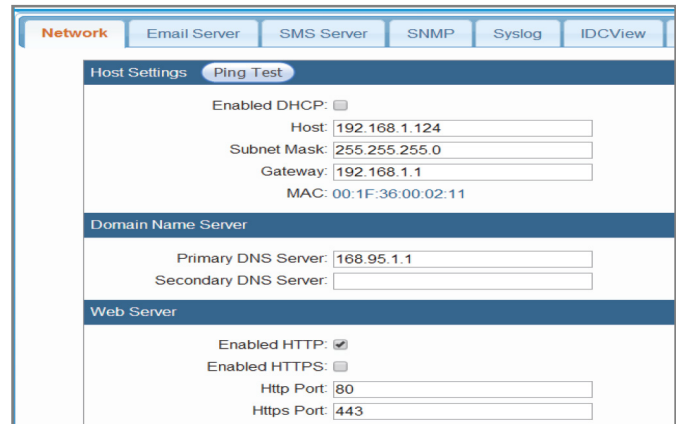
SPECIFICATIONS:

Specs	2 Port Series
Power Plug Set	IEC320 C13, NEMA5-15R
Max. Main Output Current	12 Amp
Power Input	85~264VAC 47~63Hz
Power Frequency	50 - 60 HZ
Operating temperature	0 - 35°C
Operating Humidity	0 - 90%
Storage temperature	-25 - 65 °C (-13 - 149 °F)
Dimension	178 x 123 x 44 mm (W x D x H)
Machine Net Weight	0.75 KG



Event Record			
	Time	Type	Message
1	1970-01-01 08:01:26	!	User[admin][192.168.1.205]login
2	1970-01-01 08:00:28	!	Reboot software
3	1970-01-01 08:22:40	!	User[admin][203.73.72.34]logout
4	1970-01-01 08:22:38	!	User[admin][192.168.1.205]login
5	1970-01-01 08:22:28	!	User[admin][203.73.72.34]login
6	1970-01-01 08:15:28	!	User[admin][192.168.1.213]login
7	1970-01-01 08:15:25	!	IP[192.168.1.213]try to account[admin] login
8	1970-01-01 08:00:28	!	Reboot software
9	1970-01-01 08:00:53	!	User[admin][192.168.1.213]login
10	1970-01-01 08:00:28	!	Reboot software

Account	User Level	Modify
admin	Administrator	
Test	General	



i-Tech Company LLC

TOLL FREE: (888) 483-2418 • EMAIL: info@iTechLCD.com • WEB: www.iTechLCD.com