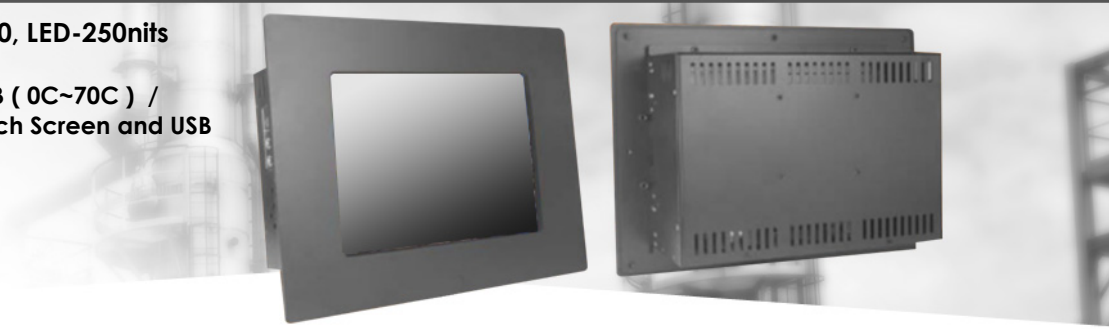


Industrial Chassis LCD

IP65 Front Panel-PC, w21.5"-1920x1080, LED-250nits

*MS-98E1 (H110 SKU) / i7-7700 / RAM 8GB (0C~70C) /
HDD 1TB (0C ~70C)+ 5 Wire Resistive Touch Screen and USB
Controller. ** NO OS***

MODEL: CMCW2150-i7



FEATURES

- 2 independent displays with multiple video outputs (LVDS, HDMI, DVI-D, VGA)
- Supports DirectX 11.1 and Intel® Clear Video Technology (up to 1080P)
- 3 SATA 3.0 ports for faster and high-capacity storage
- Supports m-SATA function by Mini-PCIe slot
- Plenty USB ports for more peripherals(USB3.0*4, USB2.0*4, Vertical Type USB2.0*1)

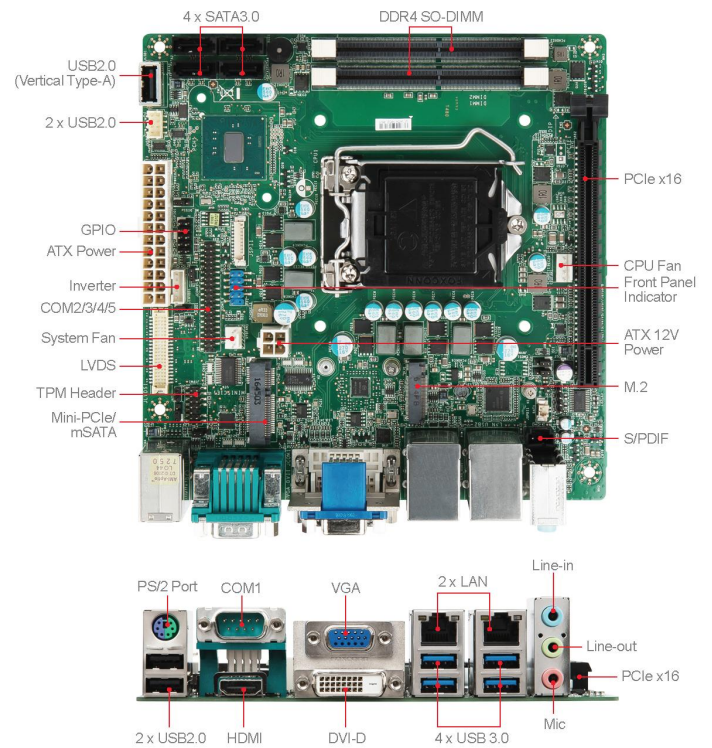
SPECIFICATIONS

Panel	Cell Type / Glass Surface	TFT LCD / Black Anti-Glare, low reflection coating
	Aspect Ratio / Size	Wide / 21.5" viewable diagonal area
	Active Area / Pixel Pitch	476.64(H) x 268.11(V) mm / 0.248(H) x 0.248(V) mm
	Native Resolution / Color	1920(H) x 1080(V) / 16.7 Million
	Brightness / Contrast	250 cd/m (typ) / 1000 : 1
	Response Time	Λ5 ms
	Viewing Angle (Typical)	H. 170° (- 85° ~ + 85°) , V. 160°(- 80° ~ + 80°)
	Light Source	LED, Long life, 35,000 hrs (typ)
Power	Power Input	24V DC-IN (4-Din Connector)
	Power Consumption	76 Watt, <1 Watt
Environmental	Operating Temperature	0°C~70°C
	Operating Humidity	0%~95%(non-condensing)

Options	Touch	Enhanced Pane	Other	
	Resistive(With Glass)	High Brightness Panel	Wifi	Networking Digital Signage
Capacitive	Panel-LED Backlight	3G	Web Cam	
SAW	Wide Temperature	Bluetooth	Motion Sensor	
	Wide Viewing Angle	RFID	Auto Light Sensor	
	Sunlight Readable		Auto-Dimming	

PC SPECS

Processor	CPU	H110 SKU 7th/6th Gen Intel® Desktop Kaby Lake/Skylake Core™ i7/i5/i3/ Pentium®/Celeron® Series Processor, Max 65W
	Frequency L2	2.3GHz~4.0GHz (Depends on CPU) 2M ~ 8M (Depends on CPU)
	CPU Type	Socket (LGA 1151)
	Chipset	Intel® H110 Express
	BIOS	AMI
Memory	Technology	Dual-channel DDR4 (non-ECC) 2133MHz/2400MHz (7th Gen)
	Max. Capacity	Up to 32 GB
	Socket	2 x 260-pin SO-DIMMs
Display	Controller	Intel® HD Graphics
	Graphic Memory	Shared system memory up to 1.7 GB SDRAM
	LVDS	1
	eDP	N/A
	VGA	1
	DVI	1 (DVI-D)
	HDMI	1
	DisplayPort	N/A
	Multiple Display	2 independent displays
	Display Interface	LVDS up to 1920 x 1200 HDMI up to 3840 x 2160 DVI-D up to 1920 x 1200 VGA up to 1920 x 1200
Ethernet	Controller	1 x Intel® I219-LM GbE-PHY 1 x Intel® I211-AT PCIe GbE LAN (Co-layer I210-AT)
Audio		Realtek® ALC887 HD Audio Codec
Super I/O	Controller	Fintek F81866AD-I
H/W Monitor	Watchdog Timer Smart Fan	256-level Watchdog Timer Yes
TPM	Controller	Pin header
I/O Interface	USB	4 x USB 3.0 (4 x rear) 4 x USB 2.0 (2 x rear; 2 x internal) 1 x USB 2.0 (Vertical, internal)
	Serial	5 x COM (1 x rear; 4 x internal) COM1: RS-232/422/485, 0V/5V/12V COM2/3/4/5: RS-232, 0V/5V/12V
	Parallel	N/A
	PS/2	1
	GPIO	8-bits (4 x GPI, 4 x GPO), 5V
Expansion Slot	PCIe x 16	1
	M.2	N/A
Storage	SATA	3 x SATA 3.0
	mSATA	1 (shared w/ Mini-PCIe)
Power Supply	DC	N/A
	ATX	ATX-Power 24P, 12V-4P
Environment	Operating Temperature	0 ~ 60°C
	Operating Humidity	
	Operating Humidity	10 ~ 90%, non-condensing
	Storage Temperature	-20 ~ 80°C
Form Factor	Storage Humidity	10 ~ 90%, non-condensing
	Dimension	170mm x 170mm (Mini-ITX)
Certification	Weight EMC	0.37 kg
	EMC	FCC, CE, RCM, VCCI, BSMI
Software Platform	OS Support	Windows 7 (32/64-bit) Windows 8.1 (64-bit) Windows 10 (64-bit) Linux Kernel 4.X, support Fedora 23(64Bit) & Ubuntu 16.04 (64Bit) of Kaby Lake-S & Skylake-S



MECHANICAL DRAWINGS

