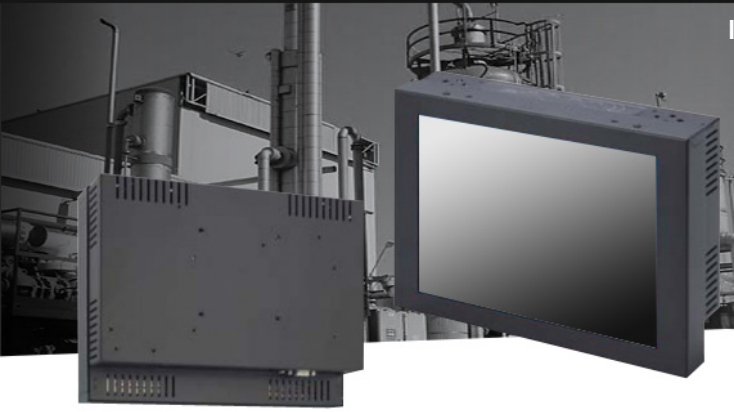


# CHASSIS MOUNT INDUSTRIAL LCD MONITOR

Industrial Chassis 8.4" LCD monitor, 800x600, LED-450nits, Wide Temp (-20~70C), Build-In PCAP touch, I/O connector (Regular): 1 x VGA, 1 x DVI-D (Single Link), 1 x USB, 1 x RS232 Remote Control

Power: 12VDC-IN w/Adapter  
Noted: NO OSD with Flat Metal Housing Custom OEM Housing  
RS232 Command Code

**Model: ECH0840WT-NC2**



## FEATURES:

- Modularize mechanical design provides flexible product configuration and easy maintenance
- Optional build-in touch screen for interactive application
- Available with auto-brightness sensor offers application in day and night
- Complete custom design/solution for OEM customers
- Auto Power On: Monitor is always "ON" when connect to power.
- Auto Video Signal On: Monitor (Backlight) will turn off when no video signal, but it will Auto turn back on.

## SPECIFICATIONS:

|                            |   |   |   |
|----------------------------|---|---|---|
| <b>Panel</b>               | Cell Type / Glass Surface   | TFT LCD / Black Anti-Glare, low reflection coating          |   |
|                            | Aspect Ratio / Size   | 4 : 3 / 8.4" viewable diagonal area                         |   |
|                            | Active Area / Pixel Pitch   | 173(H) x 130(V) mm / 0.213(H) x 0.213(V) mm                 |   |
|                            | Native Resolution / Colors  | 800(H) x 600(V) / 262 K                                     |   |
|                            | Brightness / Contrast   | 450 cd/m2 (typ) / 600 : 1                                   |   |
|                            | Response Time   | ≤ 30 ms   |   |
|                            | Viewing Angle (typical)   | H. 160° (- 80° ~ + 80°) , V. 140° (- 70° ~ + 70°)           |   |
|                            | Light Source  | LED backlight, Long life, 35,000 hrs (typ)                  |   |
| <b>Input Sources</b>       | PC System   | Signal  | Analog RGB (0.7/1.0 V <sub>p-p</sub> , 75 ohms)         |
|                            |   | Sync  | Separate Sync, Composite Sync, Sync On Green            |
|                            |   | Frequency   | F <sub>h</sub> : 30 - 82Khz , F <sub>v</sub> : 50 -75Hz |
| Audio System               | 2W speaker x 2  |   |   |
| <b>Input Terminals</b>     | 1x VGA, 1x DVI-D (Single Link), 1x USB, 1x RS232 Remote Control                   |   |   |
| <b>Convenient Features</b> | Auto Calibration , Back Light Adjustment , Plug&Play (VESA DDC/CI, DDC 2B)        |   |   |
|                            | OSD Multi-Languages , Wall Mount Ready (VESA Dimension - please refer to Drawing) |   |   |
| <b>Power</b>               | 12VDC-IN w/ Adapter   |   |   |
| <b>Power Consumption</b>   | Operation / Power Saving  | 16 watt , < 2 watt (Support DPMS)                           |   |
| <b>Temperature</b>         | Temperature / Humidity  | - 20°C ~ 70°C (- 4°F ~ 158°F) , 10% ~ 90% (no condensation) |   |
| <b>Certification</b>       | FCC , CE  |   |   |
| <b>Dimensions</b>          | Physical  | Please refer to Drawing                                     |   |
|                            | Carton  | W x H x D = TBD   |   |
| <b>Weight</b>              | N.W. / G.W.   | 2.5 Kgs / 3.5 Kgs   |   |
| <b>Container Loaded</b>    | 20ft / 40ft / 40ft HQ   | TBD (Sets , By pallet)                                      |   |

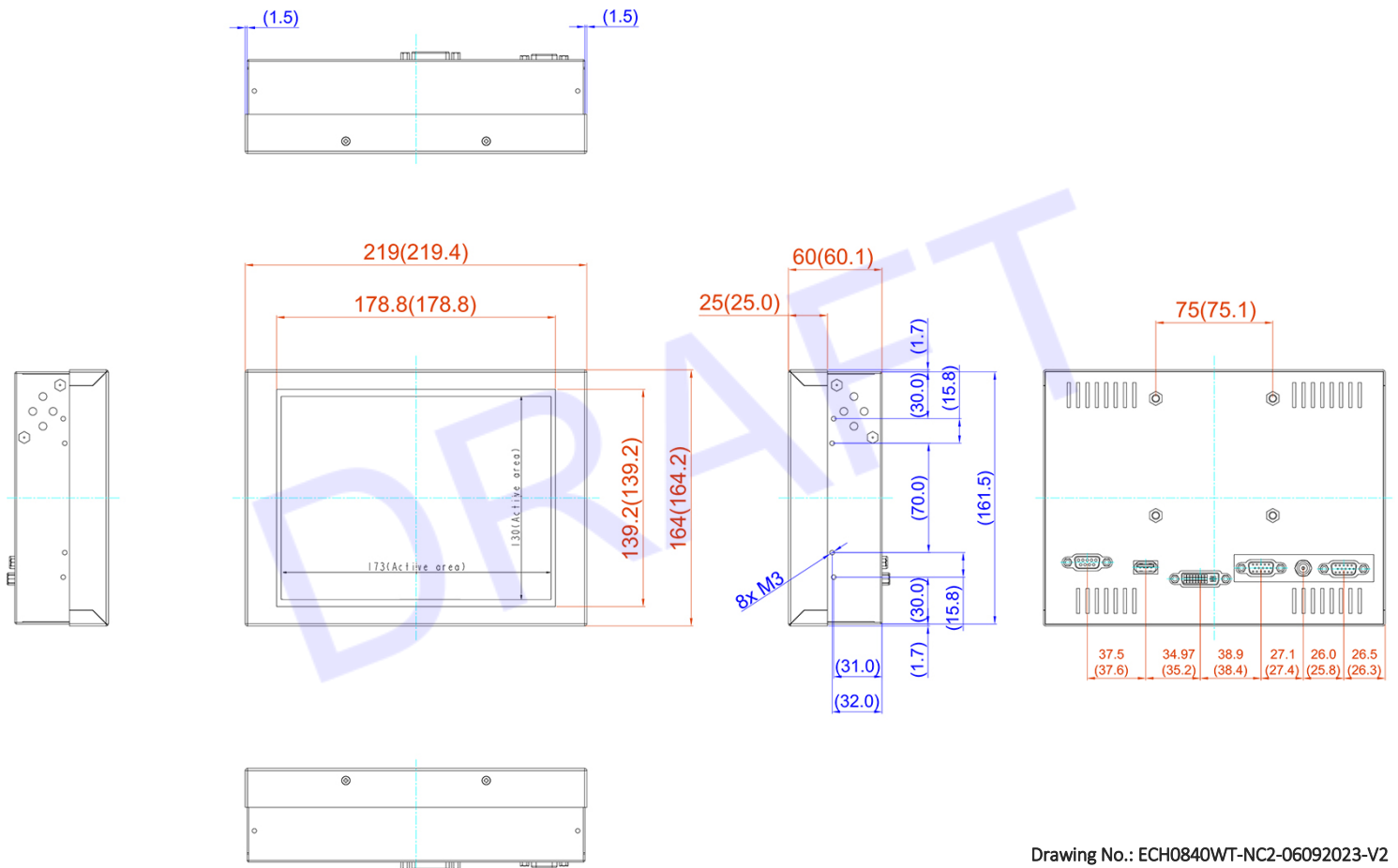
| Options | Touch            | Video / TV           | Enhanced Panel           | Others                       |
|---------|------------------|----------------------|--------------------------|------------------------------|
|         | Resistive touch  | SV + AV              | Panel with LED backlight | Digital Signage(Stand alone) |
|         | Capacitive touch | SV + AV + AV_Looping | High brightness panel    | Networking Digital Signage   |
|         | SAW touch        | SV + AV + TV         | Wide Temperature         | Motion Sensor                |
|         | Infrared touch   |                      | Sunlight Readable        | Light Sensor                 |
|         | Protected glass  |                      |                          | Auto-Dimming                 |

\*Specifications subject to change without notice, not responsible for typographical errors.

Modified Date: 10-18-2023

## MECHANICAL DRAWING:

This is subject to change without Notice. Final Drawings Will be Provided for Approval after Order.



Drawing No.: ECH0840WT-NC2-06092023-V2

## CONNECTOR FOR POWER SUPPLY

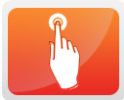


## LCD OPTIONS:



### LED Backlight Options

Introducing LED backlight options for monitors for energy efficiency and a brighter screen.



### TouchScreen Options

Our LCD has a wide selection option to choose which touchscreen technology suits for you.

|                               | Four-Wire Resistive  | Five-Wire Resistive  | Pen Touch  | Capacitive   | Surface Wave(Saw)  | Infrared Touch (Ir)  |
|-------------------------------|--|--|--|--|--|--|
| <b>PRODUCT SIZE</b>           | 1.7" - 24"   | 10.4" - 24"  | 15" - 19"  | 12" - 24"  | 10.4" - 30"  | 10.4" - 42"  |
| <b>TOUCH LIFE</b>             | 1 - 2 million touches  | 30 - 35million touches   | 100 million touches  | 100 million touches  | 50 million touches   | Long-term reliability  |
| <b>SCRATCH RESISTANCE</b>     | Hard Coated  | Hard Coated  | Hard Coated (SiO <sup>2</sup> )  | Hard Coated (SiO <sup>2</sup> )  | Glass Overlay<br>Moh's hardness rating of 7                                | Glass Overlay<br>Moh's hardness rating of 7                                |
| <b>CONTAMINANT RESISTANCE</b> | Resists moisture, dirt, vinegar, ammonia based food products and cleansers | Resists moisture, dirt, vinegar, ammonia based food products and cleansers | Resists moisture, dirt, vinegar, ammonia based food products and cleansers | Resists moisture, dirt, vinegar, ammonia based food products and cleansers | Resists moisture, dirt, vinegar, ammonia based food products and cleansers | Resists moisture, dirt, vinegar, ammonia based food products and cleansers |
| <b>INPUT METHOD</b>           | Finger, Gloved Hand, Stylus  | Finger, Gloved Hand, Stylus  | Stylus Pen   | Finger   | Finger, Gloved Hand, Soft pliable stylus                                   | Finger, Gloved Hand, Stylus  |
| <b>CONTROLLER</b>             | USB, RS232   | USB, RS232   | USB, RS232   | USB, RS232   | USB, RS232   | USB, RS232   |



### VIDEO Input Options:

For Video inputs options:

DVI, DVI+HDMI, SVideo+AV, SVideo+AV+DVI, AV+Looping, DVI+AV+Looping, HD-SDI, BNC (PAL/NTSC)



### Optical Bonding Options

- Optical Bonding provides the best reduction of ambient light washout of any commercially available enhancement technology.
- Optical Bonding has a lower cost than most other competing technologies.
- Optical Bonding offers superior ruggedization, enhancing the display durability under vibration, shock and other environmental extremes.



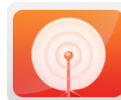
### RS-232 Remote Control Options

**Remote Control Protocol: Command Code to set system**



### 9-36V DC Input Options

iTech offers a selection of DC input from 9V to 36V



### Light Sensor and Motion Sensor Options

iTech LCD offers Light and Motion Sensor

### Privacy Filter

Front Glass Options:

- Anti Reflective AR Glass 3mm
- Anti Reflective AR Glass 6mm Vandal-Resistance
- Anti Reflective AR Glass 8mm Vandal-Resistance
- Anti Glare AG Glass 3mm