

FRONT IP65 CHASSIS LCD DISPLAY



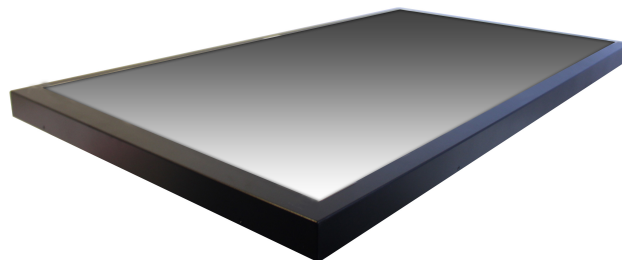
43"-3840x2160, LED-450nits VGA, DVI, HDMI, DP, USB (for Touch use) and 100-240VAC Power Cord w/ Projected Capacitive Touch (10*touch points), USB interface (4mm Thick), Built-in power system with 110/220VAC auto-switching

Model: ECHW4300-4K-PCT10



FEATURES:

- 43" Front IP65 Chassis LCD Display
- 4K, 3840x2160, Brightness-450nits
- VGA, DVI, HDMI, DP, USB (for Touch use)
- Built-in Power System with 110/220VAC Auto-Switching
- Projected Capacitive Touch (10*touch points)



SPECIFICATIONS:

PANEL SPECIFICATIONS	
Viewing Size Image	43"
Active Display Area (mm)	944 (H) x 532 (V) mm
Pixel Pitch (mm)	0.2451 (H) x 0.2451 (V) mm
Resolution	3840 x 2160
Contrast Ratio	3000 : 1 (typ.)
Color	16.7M
Brightness	450 cd/m ²
Viewing Angle	-89~89(H) ; -89~89(V) (typ.)
Recommended Resolution	3480 x 2160@60HZ
Signal Connector	VGA
IO	DVI, HDMI, DP, USB (for Touch use)

ENVIRONMENT TOLERANCE	
Operating Temperature	0 ~ 50°C
Operating Humidity	10 ~ 90%

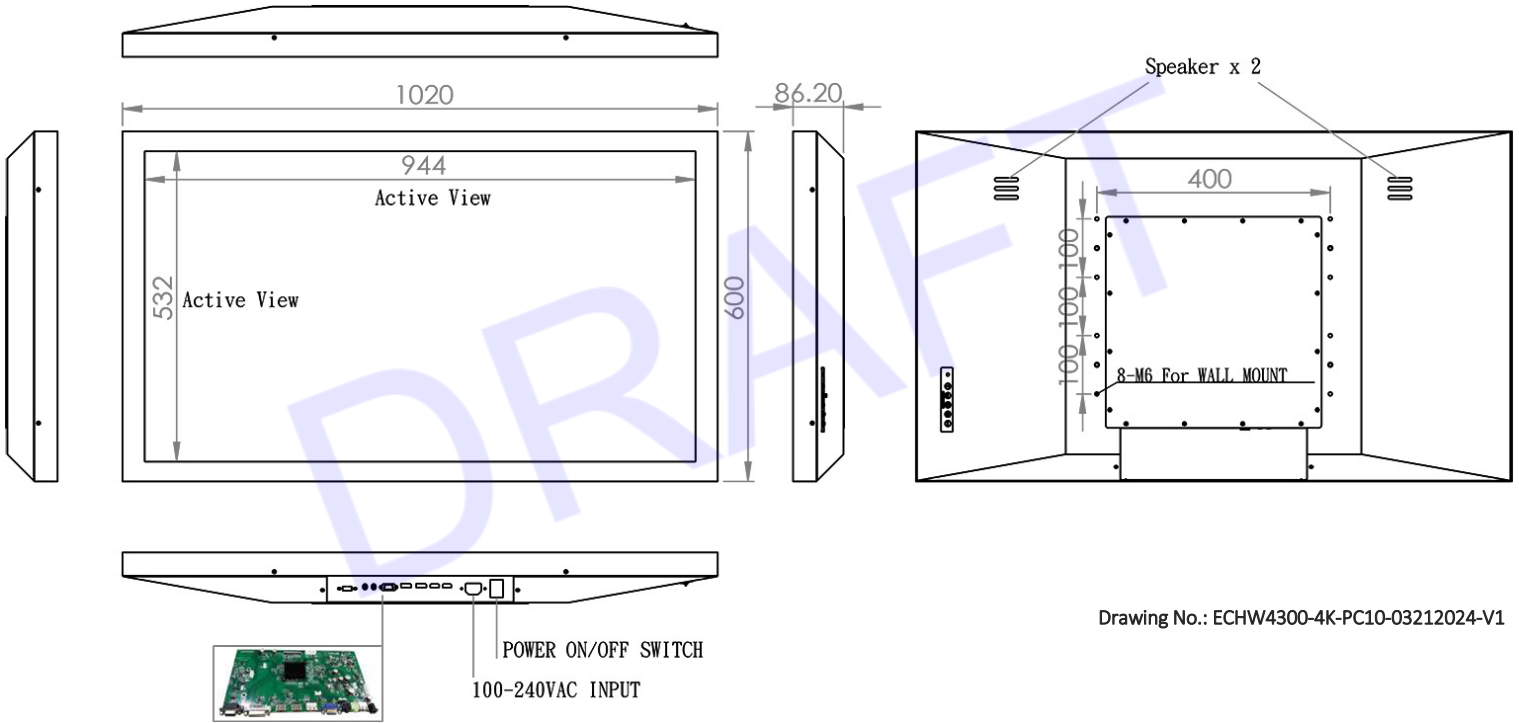
INPUT OUTPUT	
USB Ports	1
VGA	1 x VGA Out
Audio	Line Out, Line In,
HDMI	2
DP	1
DVI	1

POWER	
Power Input	100-240VAC Power Cord

**Specifications subject to change without notice, not responsible for typographical errors.*

MECHANICAL DRAWINGS:

This is subject to change without Notice. Final Drawings Will be Provided for Approval after Order.



Drawing No.: ECHW4300-4K-PC10-03212024-V1