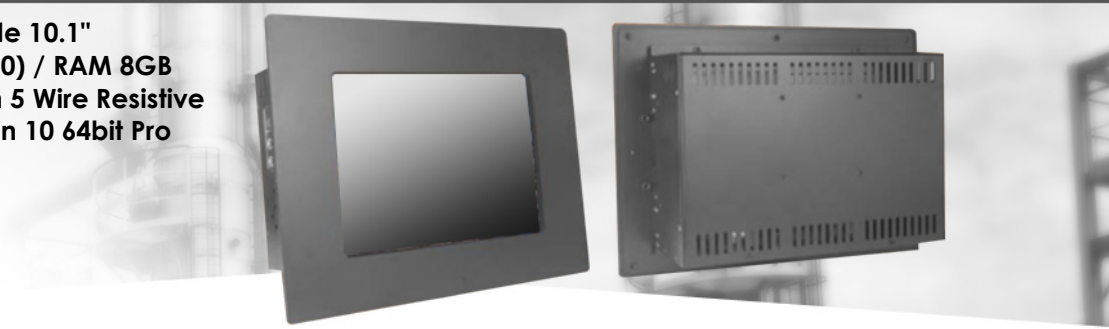


IP65 Fanless Panel PC

IP65 Front Side, Chassis Panel-PC, Wide 10.1"
1280 x 800, LED-400nits MS-98F5 (J1900) / RAM 8GB
(0C~70C) / SSD 256GB (0C ~70C) with 5 Wire Resistive
Touch Screen and USB Controller + Win 10 64bit Pro

MODEL: EMCW1010-J-V3



FEATURES

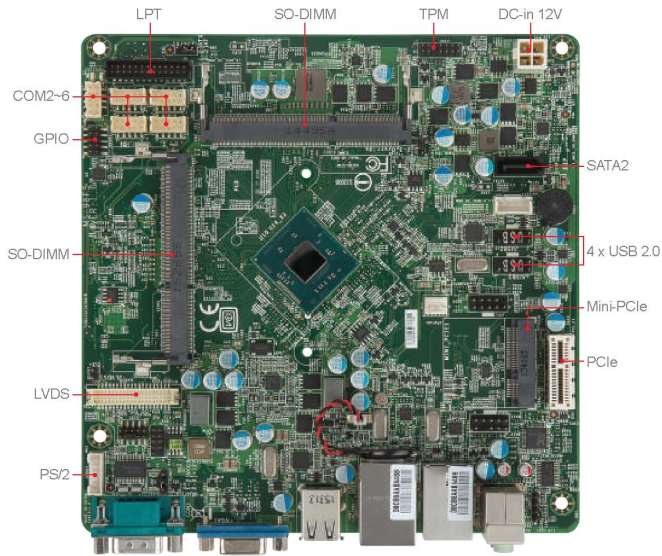
- 10.1" LCD panel, 1024 x 600, 400 nits
- Intel Celeron Processor J1900 N2930 Quad Core 1.86/2GHz processor (formerly BayTrail)
- Embedded Mini-ITX Motherboard with low power, slim and fanless design
- 2 independent displays: LVDS and VGA
- Supports 6xCOMs and 8xUSB 2.0
- Entry level with best-value for choice

SPECIFICATIONS

Panel	Cell Type / Glass Surface	TFT LCD / Black Anti-Glare, low reflection coating
	Aspect Ratio / Size	wide / 10.1" viewable diagonal area
	Active Area / Pixel Pitch	222.72(H) x 125.28(V) mm / 0.2175(H) x 0.2088(V) mm
	Native Resolution / Color	1280(H) x 800 (V) / 262 K
	Brightness / Contrast	400 cd/m (typ) / 500:1
	Response Time	≤ 16 ms
	Viewing Angle (Typical)	H. 90° (- 45° ~ + 45°) , V. 50°(- 25° ~ + 25°)
	Light Source	LED, Long life, 35,000 hrs (typ)
Power	Power Input	DC 12V
	Power Consumption	16 Watt, <1 Watt
Environmental	Operating Temperature	0°C~70°C
	Operating Humidity	0%~95%(non-condensing)

Options	Touch	Enhanced Pane	Other	
	Resistive(With Glass)	High Brightness Panel	Wifi	Networking Digital Signage
	Capacitive	Panel-LED Backlight	3G	Web Cam
	SAW	Wide Temperature	Bluetooth	Motion Sensor
		Wide Viewing Angle	RFID	Auto Light Sensor
		Sunlight Readable		Auto-Dimming

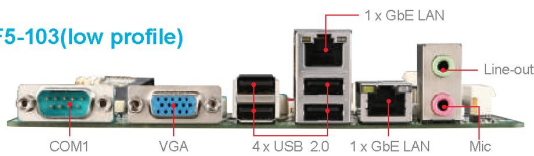
MS-98F5 MB Specifications



919-98F5-101(low profile)



919-98F5-103(low profile)



Processor	CPU	Intel® Celeron® Processor J1900, QC, 10W
	Frequency	J1900, 2.0 GHz, up to 2.42 GHz
	L2 Cache	2 MB
	CPU Type	BGA
	Chipset	Integrated
	BIOS	AMI
Memory	Technology Max.	Dual-channel DDR3L 1333/1066 MHz
		Up to 8GB
Display	Socket	2 or 1 x 204-pin SO-DIMMs (depends on SKU)
	Controller	Intel® HD Graphics
	Graphic Memory	Shared system memory up to 1.7 GB SDRAM
	LVDS	Dual Channel 24-bit (add chrontel 7511B chipset)
	VGA	1
	Multiple Display	2 independent displays
Ethernet	Display Interface	VGA up to 2560 x 1600 @60Hz LVDS up to 1920 x 1200 @60Hz
	Controller	2 or 1 x Realtek® RTL8111G-CG GbE LAN (depends on SKU)
Audio	Controller	Realtek® ALC887 HD Audio Codec
Super I/O	Controller	Fintek F81866AD-I
H/W Monitor	Watchdog Timer	256-level Watchdog Timer
		Yes
TPM	Controller	Pin header
I/O Interface	USB	8 x USB 2.0 (4 x internal; 4 x rear)
	Serial	6 x COM ports (COM1: rear, COM2~6: internal) COM1: RS-232, 0V/5V/12V COM2~6: RS-232, w/o power
	Parallel	1 (Pin header)
	PS/2	1 (Pin header)
	GPIO	8-bits (4 x GPI, 4 x GPO), 3.3V
	Expansion Slot	PCIe x1
	M.2	N/A
	Mini-PCle	1 x Full-size (w/ mSATA)
Storage	SATA	1 x SATA 2.0
	mSATA	1
Power Supply	DC	DC-in 12V
	ATX	N/A
Environment	Operating Temperature	0 ~ 70°C
	Operating Humidity	10 ~ 90%, non-condensing
	Storage Temperature	-20 ~ 80°C
	Storage Humidity	10 ~ 90%, non-condensing
Form Factor	Dimensions	170 x 170mm (Mini-ITX)
	Weight	0.37 kg
Certification	EMC	FCC, CE, RCM, VCCI, BSMI
Software Platform	OS Support	Windows 7 (32/64-bit) Windows 8 (32/64-bit) Windows 10 (64-bit)

MECHANICAL DRAWING

