

# All-in-One POS Terminal

15" All-in-One POS Terminal Fanless design with True-Flat Projective Capacitive & Resistive Touch Sensors

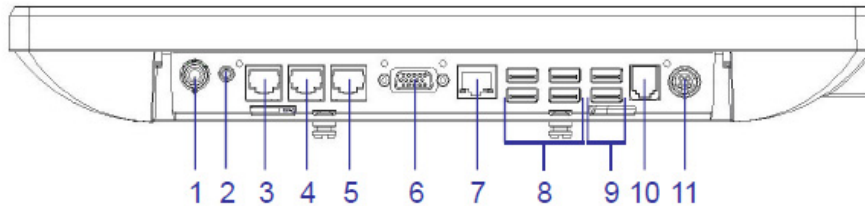
Model: **PNDC1500-TR-LT01**



## FEATURES

- Multiple technological platforms: (M22/Pineview, M62/Baytrail & M63/Haswell motherboards)
- True-Flat Projective Capacitive & Resistive Touch Sensors
- Fanless design (up to Core-i5 with Intel Desktop CPU)
- IP65 (Front only)
- Rich I/O and rich peripheral options
- Die-casting rear housing for optimum thermal dissipation
- Die-casting stand for optimum stability
- Cable cover to help preventing unwanted tampering
- Customer display with wide tilting angle for easy and comfortable customer viewing
- Terminal with wide tilting angle for easy cable installation & uninstallation
- Easy HDD access
- Discreet yet easy to access power button
- Standard 100x100 and 75x75 VESA for pole-, wall-, and stand- mountings

## I/O Port



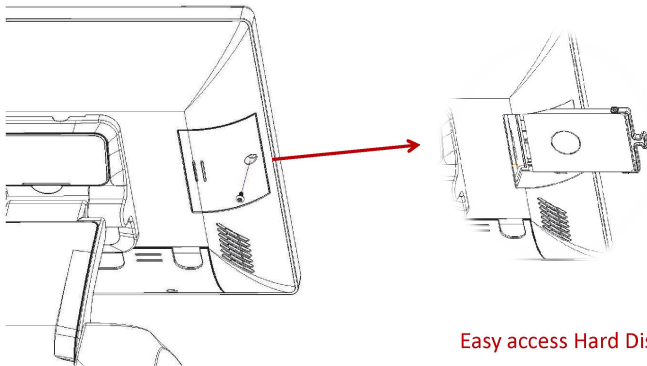
Item No.	Description
1	Power Button
2	Spkr-Out & Mic-In COMBO Jack
3	COM1 (RJ45)
4	COM2 (RJ45)
5	COM3 (RJ45)
6	VGA
7	LAN
8	USB 2.0 x 4
9	USB 2.0 x 2 (M22&M62)   USB 3.0 x 2 (M63)
10	Cash Drawer
11	DC-In (12V)

## SPECIFICATIONS

<b>Model</b>		<b>PNDC1500-TR-LT01</b>				
<b>Motherboard</b>		M22	M62	M63		
<b>CPU Support</b>		Intel Pineview D525 1.8GHz	Intel Bay Trail-D J1900 2G	Intel Haswell Celeron G1820 2.7G Pentium G3320TE 2.3G Core i3-4330TE 2.4G Core i5-4570TE 2.7G		
<b>System Memory</b>		DDR3, SO-DIMM x 1, 2GB (Max. 4GB)	DDR3L, SO-DIMM x 2, 2GB (Max. 8GB)	DDR3L, SO-DIMM x 2, 4GB (Max. 16GB)		
<b>Storage</b>	<b>HDD</b>	320GB 2.5" x 1				
	<b>SSD</b>	SSD x 1 (Optional)				
<b>LCD</b>	<b>Size</b>	15" TFT LED LCD Panel				
	<b>Brightness</b>	350cd/m2 (Typ.)				
	<b>Resolution</b>	<b>1024 x 768</b>				
<b>Touch Screen</b>		Default: True-Flat Projected Capacitive Touch / Optional: True-Flat Resistive Touch				
<b>Tilt Angle</b>		0 ~ 120 degree				
<b>External I/O Port</b>	<b>Rear</b>	6 x USB 2.0 Ports		4 x USB 2.0 + 2 x USB 3.0 Ports		
		3 x Serial port (RJ45); (COM1~2: 0/5/12V by BIOS; COM3:0/5V by BIOS)		3 x Serial port (RJ45); (COM1~3: 0/5/12V by BIOS)		
		1 x VGA (Power enable by BIOS; +12V)				
		1 x Cash Drawer Port (RJ11; +12V)				
		1 x LAN (10/100/1000)				
		1 x Mic-In/Speaker-out (COMBO Jack)				
		1 x DC In				
		1 x Power Switch				
		<b>Speaker</b>				2 x 2W speaker (Optional)
		<b>Power</b>		External power adapter, 60W/12V (Lock type)		External power adapter, 80W/12V (Lock type)
<b>EMC Safety</b>		CE, FCC Class A				
<b>OS Support</b>		Windows® 7 Professional Windows® Embedded POSReady 7 Linux		Windows® 7 Professional Windows® Embedded POSReady 7 Windows® Embedded 8.1 Industry Linux		

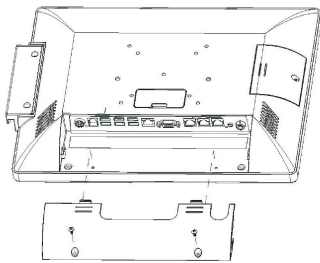


### Quick & easy access to Hard Disk



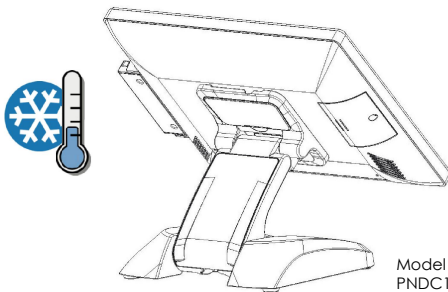
Easy access Hard Disk Door.

### Cable Cover



Cable Cover prevents unauthorized tampering. Screws provided for added security.

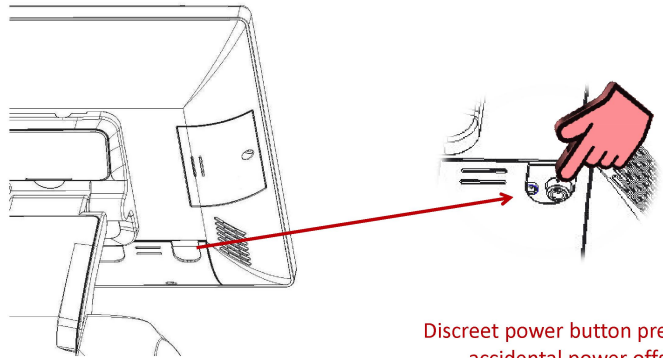
### Die casting housing



Model Shown  
PNDC1500-TR-LT01/M22/M62

Die-casting housing for quicker and better heat dissipation.  
Die-casting stand for unsurpassed stability and robustness.

### Discreet yet easy access Power Button



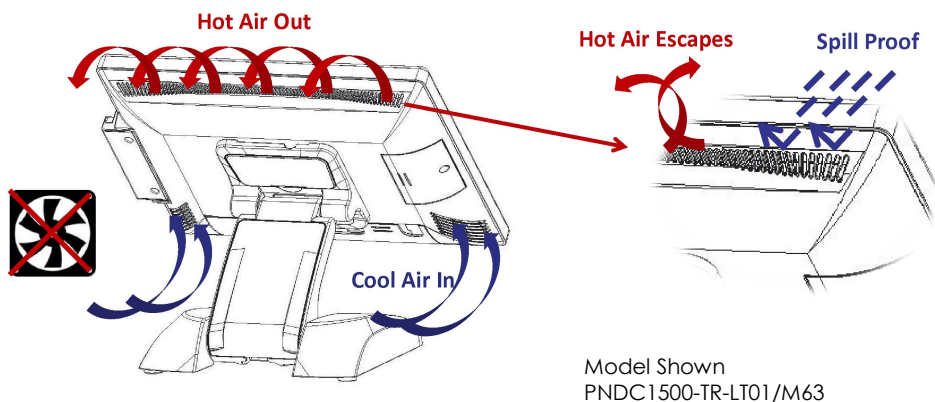
Discreet power button prevents accidental power offs.

### IP65



IP 65 (Front) water & dust proof for harsh environment.

## FANLESS, SPILL PROOF VENTILATION



Patent pending fanless design with ventilation that allows heat to escape yet prevents liquid from getting into the system.

## MOUNTING OPTIONS

